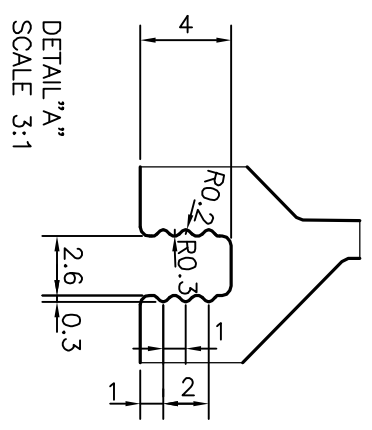
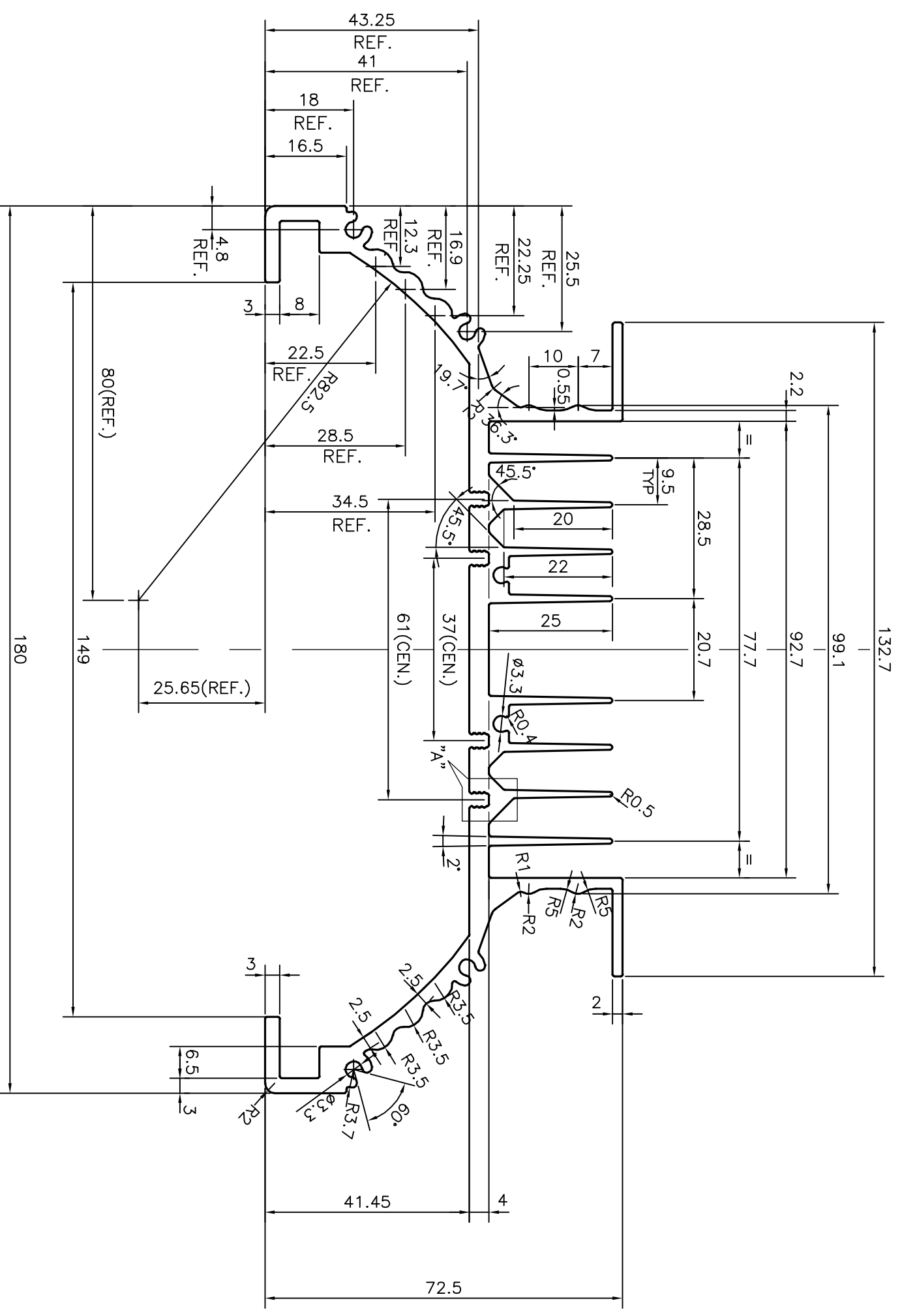



P-15843
S4942
33628



| | | | | | |
|--|--|----------------------|--------------|-----------|------------|
|  JINDAL ALUMINIUM LTD. BANGALORE-560073 (INDIA) | | NAME | J.P. KAUSHIK | DATE | 09-05-2016 |
| | | DRAWN | | CHECKED | |
| 1. ALL DIMENSIONS ARE IN mm. 2. ROUND OFF ALL SHARP CORNERS WITH 0.40 mm. 3. TOLERANCES WILL BE AS PER IS:3965-1981 UNLESS OTHERWISE SPECIFIED | | APPROVED | S.S. GARG | S.S. GARG | 16-05-2016 |
| PARTY'S NAME GOLDWYN LTD., NOIDA | | SCALE | 1:1 | | |
| PARTY'S DRAWING No. GW15510 REV. 02 | | AREA mm ² | 1554.028 | | |
| ALLOY & TEMPER 6063 T6 | | PERIMETER mm. | 1143.803 | | |
| DESCRIPTION LOWER EXTRUSION SECTION | | WEIGHT kg/m | 4.196 | | |
| | | DRAWING No. | SECTION No. | | |
| | | P-15843 | - | | |
| | | S4942 | S4942 | | |
| | | 33628 | 33628 | | |