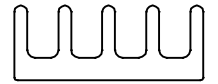


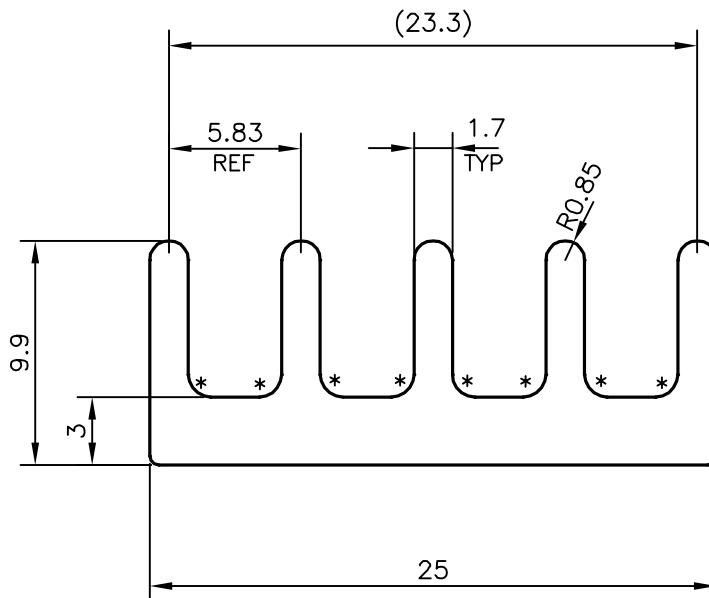
P-18563

S5957

33662



1:1



* = 1.0 RADIUS (8 PLACES)

TOLERANCES ON OVERALL DIMENSIONS OF HOLLOW SECTIONS

UPTO 20.0mm - ± 0.30	UPTO 80.0mm - ± 0.70	UPTO 180.0mm - ± 1.27	1. STRAIGHTNESS=1.7mm/M 2. TWIST=1.7mm/M 3. ANGULARITY= $\pm 2^\circ$ 4. FLATNESS =0.006xWIDTH
UPTO 30.0mm - ± 0.38	UPTO 100.0mm - ± 0.80	UPTO 200.0mm - ± 1.40	
UPTO 40.0mm - ± 0.45	UPTO 120.0mm - ± 0.90	UPTO 225.0mm - ± 1.52	
UPTO 50.0mm - ± 0.52	UPTO 140.0mm - ± 1.00		
UPTO 60.0mm - ± 0.60	UPTO 160.0mm - ± 1.14		



SYMBOL OF QUALITY
AN ISO 9001 COMPANY

JINDAL ALUMINIUM LTD.
BANGALORE-560073 (INDIA)

	NAME	DATE
DRAWN	J.P.KAUSHIK	13-08-2018
CHECKED		
APPROVED	B.NATARAJA	16-08-2018

1. ALL DIMENSIONS ARE IN mm.
2. ROUND OFF ALL SHARP CORNERS WITH 0.40 mm.
3. TOLERANCES WILL BE AS PER IS:3965-1981 , UNLESS OTHERWISE SPECIFIED

SCALE	3:1
AREA mm ²	133.748
PERIMETER mm.	117.575
WEIGHT kg/m	0.361
DRAWING No.	SECTION No.
P-18563	-
S5957	S5957
33662	33662

PARTY'S NAME	QUALITEK ENGINEERS, BANGALORE
PARTY'S DRAWING No.	AS PER DRAWING
ALLOY & TEMPER	6063 T6
DESCRIPTION	HEAT SINK SECTION