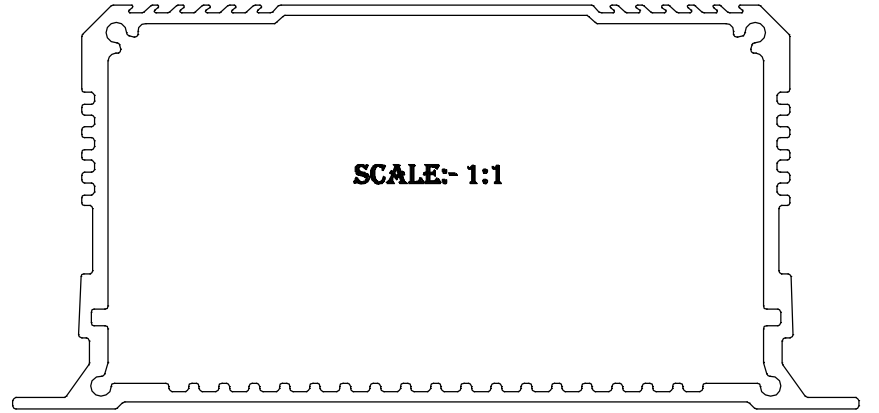
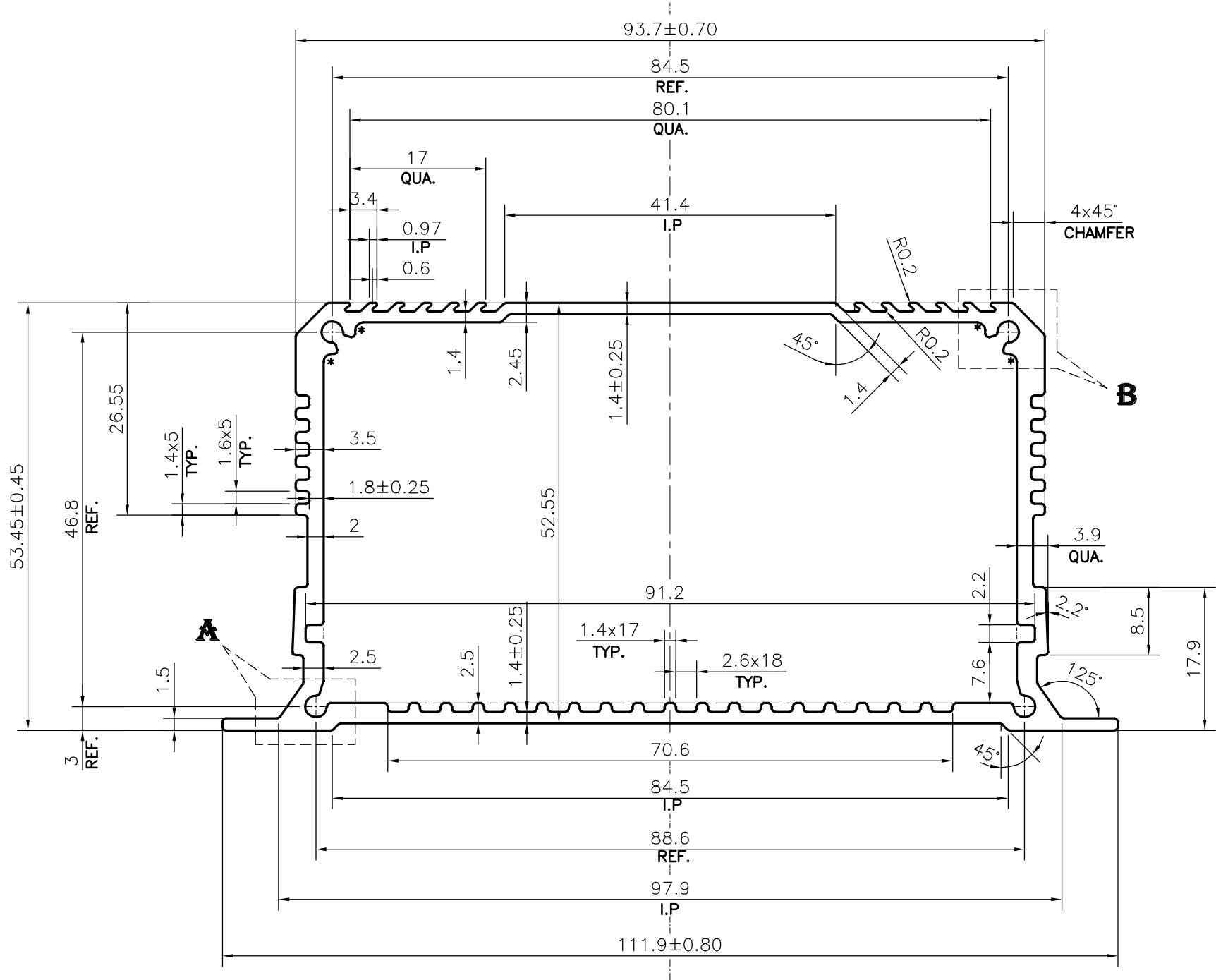


P-21778

33663

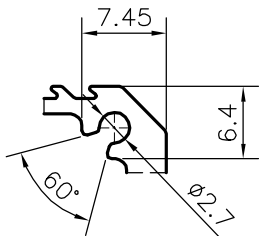


SCALE:- 1:1

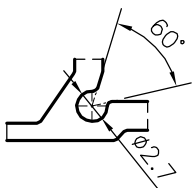


WEIGHT RANGE (kg/m) - 1.421 - 1.989 (APPROX.)

* = 1mm RADIUS (4 PLACES)



DETAIL OF "B"
SCALE:- 1.5:1



DETAIL OF "A"
SCALE:- 1.5:1

TOLERANCES ON OVERALL DIMENSIONS OF HOLLOW SECTIONS

| | | | |
|---------------------|----------------------|----------------------|---|
| UPTO 20.0mm - ±0.30 | UPTO 80.0mm - ±0.70 | UPTO 180.0mm - ±1.27 | 1. STRAIGHTNESS=1.7mm/M 2. TWIST=1.7mm/M 3. ANGULARITY= ±2° 4. FLATNESS =0.006xWIDTH |
| UPTO 30.0mm - ±0.38 | UPTO 100.0mm - ±0.80 | UPTO 200.0mm - ±1.40 | |
| UPTO 40.0mm - ±0.45 | UPTO 120.0mm - ±0.90 | UPTO 225.0mm - ±1.52 | |
| UPTO 50.0mm - ±0.52 | UPTO 140.0mm - ±1.00 | | |
| UPTO 60.0mm - ±0.60 | UPTO 160.0mm - ±1.14 | | |

| | | | |
|---|--|----------------------|------------|
| <p>SYMBOL OF QUALITY AN ISO 9001 COMPANY</p> | <p>JINDAL ALUMINIUM LTD. BANGALORE-560073 (INDIA)</p> | NAME | DATE |
| | | DRAWN | DARPAN |
| <p>1. ALL DIMENSIONS ARE IN mm. 2. ROUND OFF ALL SHARP CORNERS WITH 0.40 mm. 3. TOLERANCES WILL BE AS PER IS:6477-1983 UNLESS OTHERWISE SPECIFIED</p> | | CHECKED | |
| | | APPROVED | B.NATARAJA |
| <p>PARTY'S NAME FUSION POWER SYSTEMS, GURGAON</p> | | SCALE | 1.5:1 |
| | | AREA mm ² | 631.408 |
| <p>PARTY'S DRAWING No. AS PER SAMPLE</p> | | PERIMETER mm. | 383.439 |
| | | WEIGHT kg/m | 1.705 |
| <p>ALLOY & TEMPER 6063 T6</p> | | DRAWING No. | P-21778 |
| | | SECTION No. | - |
| <p>DESCRIPTION HEAT SINK SECTION</p> | | | 33663 |
| | | | 33663 |