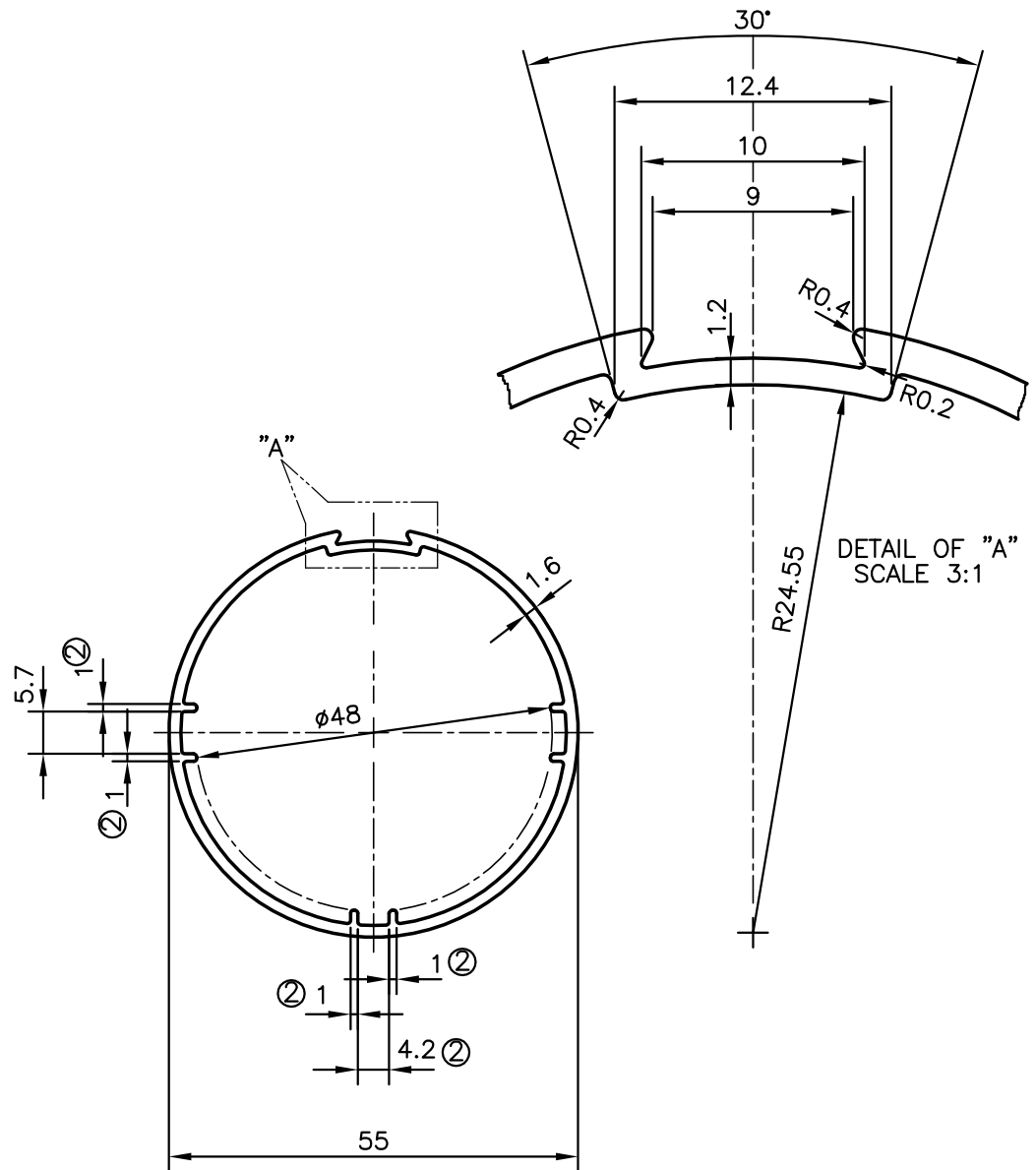


P-9297-1

S2254

34011

**IMPORTANT NOTE:-**

*PLEASE CHECK FITTING WITH PLASTIC COMPONENT DURING EXTRUSION*

ISSUE-2

GAP CHANGED FROM 3.8 TO 4.2, THICKNESS CHANGED FROM 1.6 TO 1.0 mm  
WEIGHT ALSO CHANGED FROM 0.776 kg/M TO 0.757 kg/M



SYMBOL OF QUALITY  
AN ISO 9001 COMPANY

**JINDAL ALUMINIUM LTD.**  
BANGALORE-560073 (INDIA)

	NAME	DATE
DRAWN	J.P.KAUSHIK	19-09-2009
CHECKED		
APPROVED		

1. ALL DIMENSIONS ARE IN mm.
2. ROUND OFF ALL SHARP CORNERS WITH 0.40 mm.
3. TOLERANCES WILL BE AS PER IS:6477-1983 UNLESS OTHERWISE SPECIFIED

SCALE	1:1
AREA mm <sup>2</sup>	280.361
PERIMETER mm.	177
WEIGHT kg/m	0.757

PARTY'S NAME	WALLTRACTS (INDIA) PVT. LTD., BANGALORE
PARTY'S DRAWING No.	AS PER SKETCH
ALLOY & TEMPER	HE9 WP
DESCRIPTION	CURTAIN WALL SECTION

DRAWING No.	SECTION No.
P-9297-1	-
S2254	S2254(ISSUE-2)
34011	34011