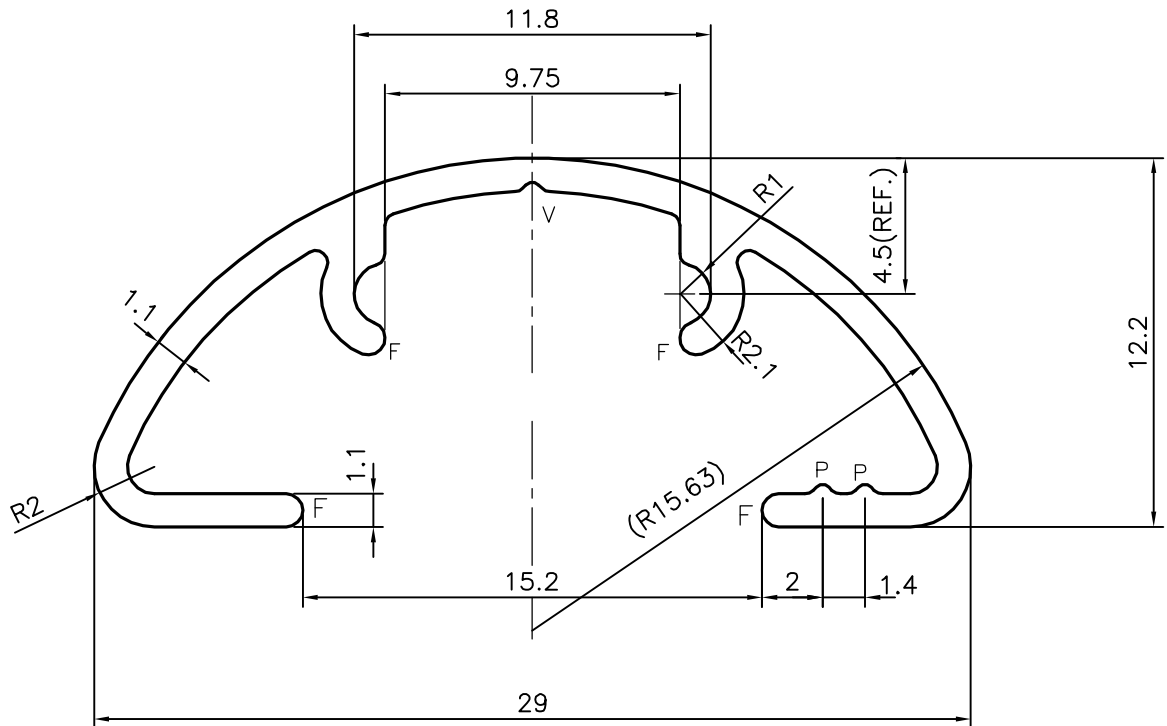
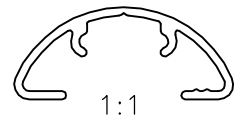


P-13571

S4134

34066



1. STRAIGHTNESS=1.7mm/M
2. TWIST=1.7mm/M
3. ANGULARITY= $\pm 2^\circ$
4. FLATNESS =0.3mm

P = PIP $0.3 \times 90^\circ$ (2 PLACES)
 F= FULL RADIUS (4 PLACES)
 V = VEE GROOVE $0.3 \times 90^\circ$

TOLERANCES ON OVERALL WIDTHS & WIDTHS ACROSS FLATS OF BARS, & REGULAR SECTIONS

UPTO 6.40mm - ± 0.20	UPTO 32.0mm - ± 0.38	UPTO 120.0mm - ± 0.85	UPTO 320.00mm - ± 1.70
UPTO 10.0mm - ± 0.23	UPTO 50.0mm - ± 0.46	UPTO 160.0mm - ± 1.02	
UPTO 12.0mm - ± 0.25	UPTO 60.0mm - ± 0.53	UPTO 200.0mm - ± 1.14	
UPTO 16.0mm - ± 0.28	UPTO 80.0mm - ± 0.69	UPTO 250.0mm - ± 1.40	
UPTO 25.0mm - ± 0.30	UPTO 100.0mm - ± 0.75	UPTO 300.0mm - ± 1.65	



SYMBOL OF QUALITY
AN ISO 9001 COMPANY

JINDAL ALUMINIUM LTD.
BANGALORE-560073 (INDIA)

	NAME	DATE
DRAWN	J.P.KAUSHIK	05-05-2014
CHECKED		
APPROVED	S.S.GARG	02-06-2014

1. ALL DIMENSIONS ARE IN mm.
2. ROUND OFF ALL SHARP CORNERS WITH 0.40 mm.
3. TOLERANCES WILL BE AS PER IS:3965-1981, UNLESS OTHERWISE SPECIFIED

SCALE	4:1
AREA mm ²	67.749
PERIMETER mm.	118.224
WEIGHT kg/m	0.183

PARTY'S NAME LOUVERLINE BLINDS, BANGALORE

DRAWING No. SECTION No.

PARTY'S DRAWING No. AS PER SAMPLE

P-13571

-

ALLOY & TEMPER HE9 WP

S4134

S4134

DESCRIPTION

MISC. SECTION

34066

34066