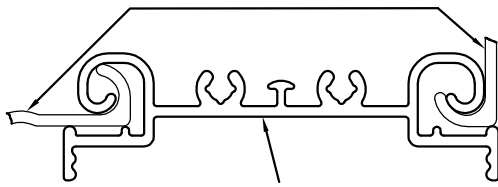


P-11181

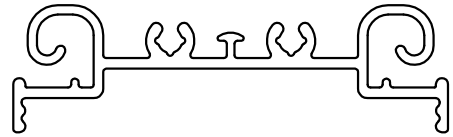
X1554

34534

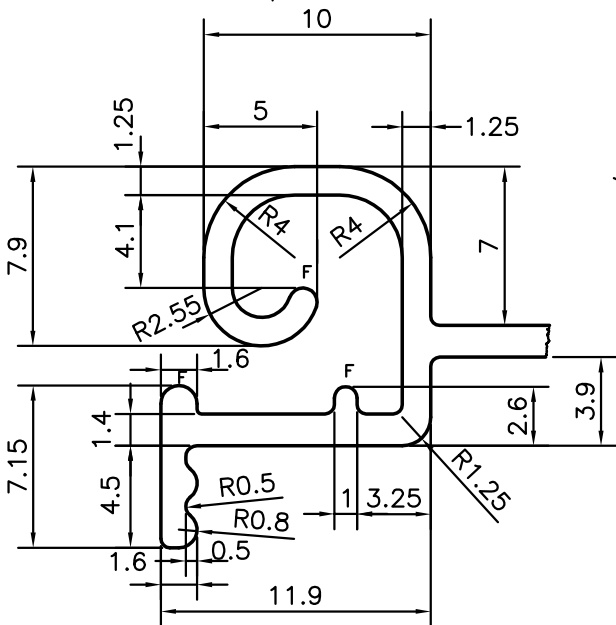
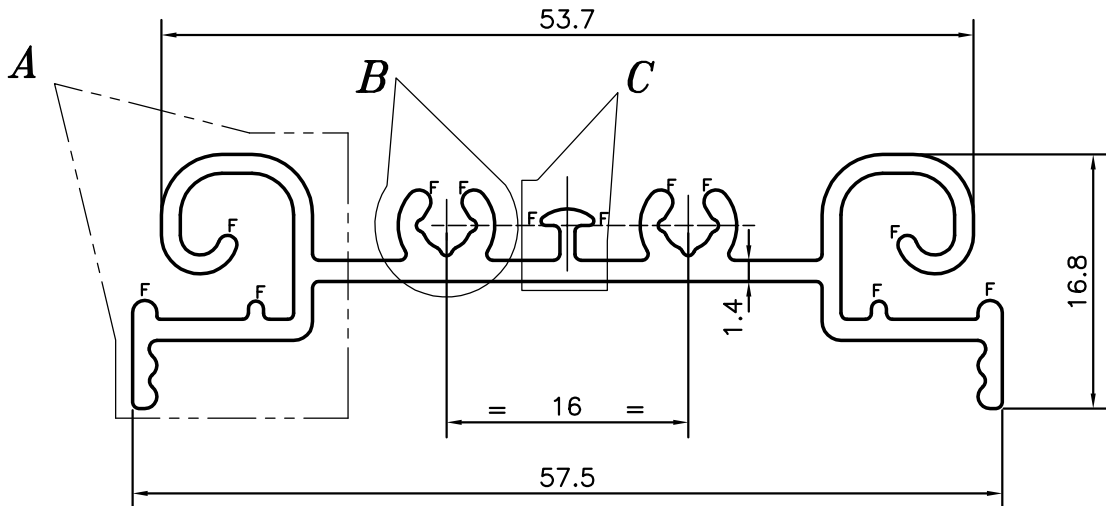
SECTION No: 34533



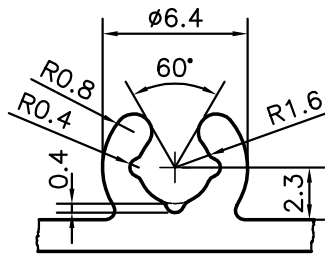
MATCHING SECTION OF 34534



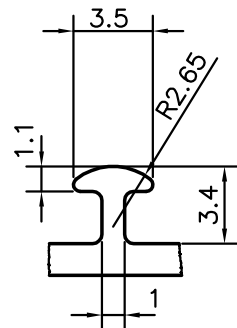
SCALE : 1:1



DETAIL OF "A"
SCALE 3:1



DETAIL OF "B"
SCALE 3:1



DETAIL OF "C"
SCALE 3:1

F = FULL RADIUS (10 PLACES)



SYMBOL OF QUALITY
AN ISO 9001 COMPANY

JINDAL ALUMINIUM LTD.
BANGALORE-560073 (INDIA)

	NAME	DATE
DRAWN	PARVESH	27-08-2011
CHECKED		
APPROVED	S.S.GARG	03-10-2011
SCALE		2:1
AREA mm ²		202.749
PERIMETER mm.		291.836
WEIGHT kg/m		0.547
DRAWING No.	SECTION No.	
P-11181	-	
X1554	X1554	
34534	34534	

1. ALL DIMENSIONS ARE IN mm.
2. ROUND OFF ALL SHARP CORNERS WITH 0.40 mm.
3. TOLERANCES WILL BE AS PER, BS:EN-755-9 UNLESS OTHERWISE SPECIFIED

PARTY'S NAME	VINAR SYSTEMS PVT., LTD., GURGAON
PARTY'S DRAWING No.	DS-90-10
ALLOY & TEMPER	63400 WP
DESCRIPTION	MIS. SECTION