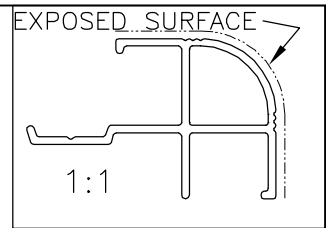


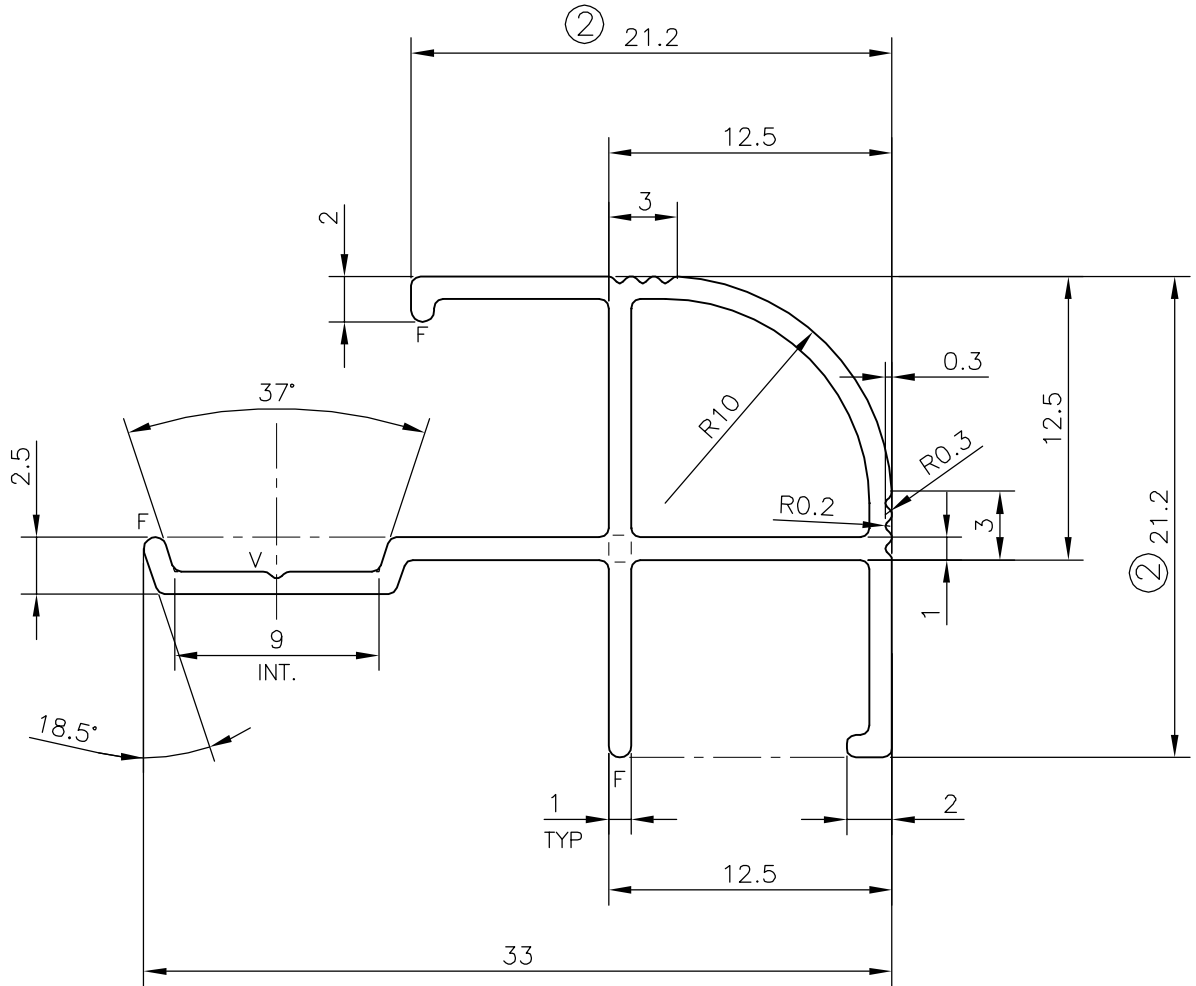
P-16870  
S5322  
34629



ISSUE-2: -

DIMENSION CHANGED FROM 16.7 TO 21.2 & 19 TO 21.2

WEIGHT ALSO CHANGED FROM 0.217 kg/m TO 0.247 kg/m



V = V GROOVE 0.3x90° (ONE PLACE)  
F = FULL RADIUS (3 PLACES)

TOLERANCES ON OVERALL DIMENSIONS OF HOLLOW SECTIONS

UPTO 20.0mm - ±0.30	UPTO 80.0mm - ±0.70	UPTO 180.0mm - ±1.27	1. STRAIGHTNESS=1.7mm/M 2. TWIST=1.7mm/M 3. ANGULARITY= ±2° 4. FLATNESS =0.006xWIDTH
UPTO 30.0mm - ±0.38	UPTO 100.0mm - ±0.80	UPTO 200.0mm - ±1.40	
UPTO 40.0mm - ±0.45	UPTO 120.0mm - ±0.90	UPTO 225.0mm - ±1.52	
UPTO 50.0mm - ±0.52	UPTO 140.0mm - ±1.00		
UPTO 60.0mm - ±0.60	UPTO 160.0mm - ±1.14		

<p>SYMBOL OF QUALITY AN ISO 9001 COMPANY</p>	<p><b>JINDAL ALUMINIUM LTD.</b> BANGALORE-560073 (INDIA)</p>	NAME	DATE
		DRAWN	J.P.KAUSHIK
		CHECKED	
		APPROVED	B.NATARAJ 11-03-2017
<p>1. ALL DIMENSIONS ARE IN mm. 2. ROUND OFF ALL SHARP CORNERS WITH 0.40 mm. 3. TOLERANCES WILL BE AS PER IS:6477-1983 UNLESS OTHERWISE SPECIFIED</p>		SCALE	3:1
		AREA mm <sup>2</sup>	91.559
		PERIMETER mm.	145.015
		WEIGHT kg/m	0.247
		DRAWING No.	SECTION No.
PARTY'S NAME	NIPANI INDUSTRIES, JABALPUR	P-16870	-
PARTY'S DRAWING No.	AS PER AutoCAD DRAWING REV. R-T	S5322	S5322(ISSUE-2)
ALLOY & TEMPER	6063 T6	34629	34629
DESCRIPTION	MISC. SECTION		