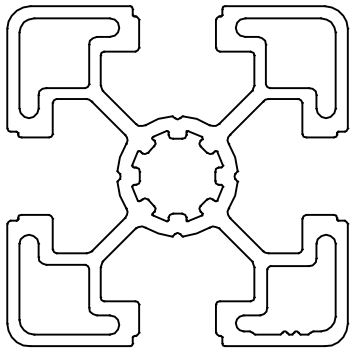
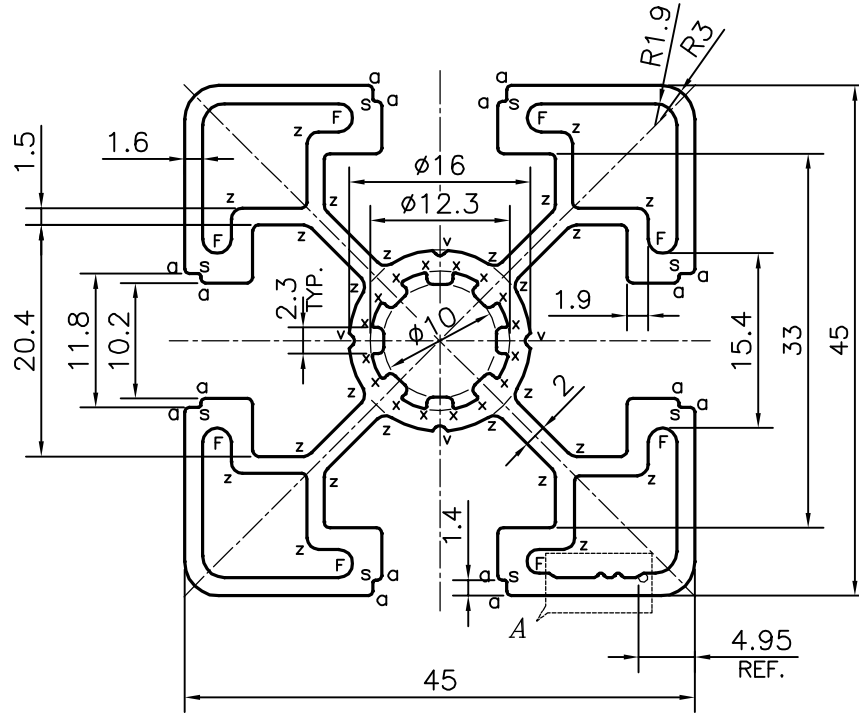
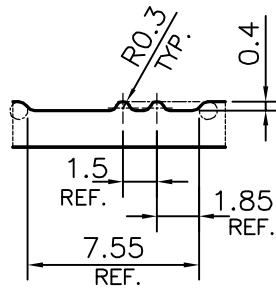


P-16399

35108



SCALE: - 1:1



DETAIL OF "A"
SCALE 3:1

- X = RADIUS 0.2mm. (16 PLACES)
- a = RADIUS 0.4mm. (16 PLACES)
- Z = RADIUS 1.0mm. (24 PLACES)
- S = RADIUS 0.2mm. (8 PLACES)
- F = FULL RADIUS (8 PLACES)
- V = VEE GROOVE 0.5x90° (4 PLACES)

TOLERANCES ON OVERALL WIDTHS & WIDTHS ACROSS FLATS OF BARS, & REGULAR SECTIONS

UPTO 6.40mm - ±0.20	UPTO 32.0mm - ±0.38	UPTO 120.0mm - ±0.85	1. STRAIGHTNESS=1.7mm/M 2. TWIST=1.7mm/M 3. ANGULARITY= ±2° 4. FLATNESS =0.007xWIDTH
UPTO 10.0mm - ±0.23	UPTO 50.0mm - ±0.46	UPTO 160.0mm - ±1.02	
UPTO 12.0mm - ±0.25	UPTO 60.0mm - ±0.53	UPTO 200.0mm - ±1.14	
UPTO 16.0mm - ±0.28	UPTO 80.0mm - ±0.69	UPTO 250.0mm - ±1.40	
UPTO 25.0mm - ±0.30	UPTO 100.0mm - ±0.75	UPTO 300.0mm - ±1.65	



SYMBOL OF QUALITY
AN ISO 9001 COMPANY

JINDAL ALUMINIUM LTD.
BANGALORE-560073 (INDIA)

	NAME	DATE
DRAWN	PARVESH	26-09-2016
CHECKED		
APPROVED	S.S. GARG	28-09-2016
SCALE		1.5:1
AREA mm ²		583.931
PERIMETER mm.		356.004
WEIGHT kg/m		1.577
DRAWING No.		SECTION No.
P-16399		-
35108		35108

1. ALL DIMENSIONS ARE IN mm.
2. ROUND OFF ALL SHARP CORNERS WITH 0.40 mm.
3. TOLERANCES WILL BE AS PER IS:6477-1983 , UNLESS OTHERWISE SPECIFIED

PARTY'S NAME	GENERAL CATEGORY, BANGALORE MARKET
PARTY'S DRAWING No.	AS PER DRAWING No. P-14072-1
ALLOY & TEMPER	HE9 WP
DESCRIPTION	DISPLAY SECTION