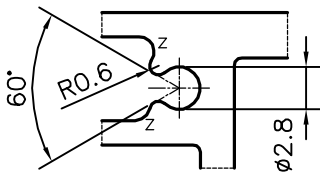
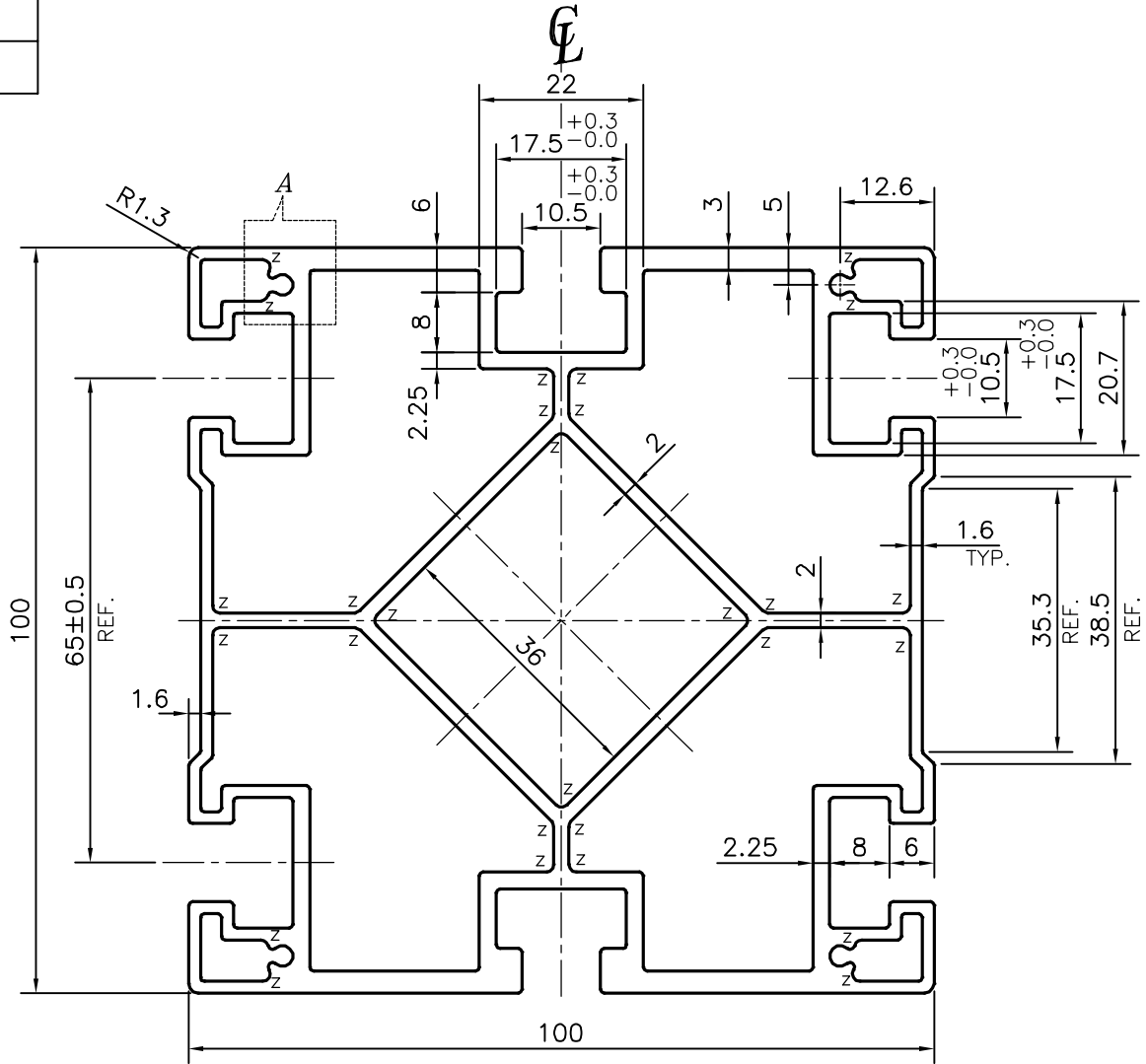


P-14554
S4442
35119




DETAIL OF "A"
SCALE 2:1

Z = RADIUS 1 mm. (28 PLACES)

UNSPECIFIED CORNERS RADIUS WILL BE 0.50 MM.

TOLERANCES ON OVERALL WIDTHS & WIDTHS ACROSS FLATS OF BARS, & REGULAR SECTIONS

UPTO 6.40mm - ±0.20	UPTO 32.0mm - ±0.38	UPTO 120.0mm - ±0.85	1. STRAIGHTNESS=1.7mm/M 2. TWIST=1.7mm/M 3. ANGULARITY= ±2° 4. FLATNESS =0.007xWIDTH
UPTO 10.0mm - ±0.23	UPTO 50.0mm - ±0.46	UPTO 160.0mm - ±1.02	
UPTO 12.0mm - ±0.25	UPTO 60.0mm - ±0.53	UPTO 200.0mm - ±1.14	
UPTO 16.0mm - ±0.28	UPTO 80.0mm - ±0.69	UPTO 250.0mm - ±1.40	
UPTO 25.0mm - ±0.30	UPTO 100.0mm - ±0.75	UPTO 300.0mm - ±1.65	

 SYMBOL OF QUALITY AN ISO 9001 COMPANY	JINDAL ALUMINIUM LTD. BANGALORE-560073 (INDIA)	NAME	DATE
		DRAWN	PARVESH 16-04-2015
		CHECKED	
		APPROVED	S.S.GARG 23-04-2015
1. ALL DIMENSIONS ARE IN mm. 2. ROUND OFF ALL SHARP CORNERS WITH 0.40 mm. 3. TOLERANCES WILL BE AS PER IS:6477-1983, UNLESS OTHERWISE SPECIFIED		SCALE	1:1
		AREA mm ²	1822.838
		PERIMETER mm.	641.946
		WEIGHT kg/m	4.922
		DRAWING No.	SECTION No.
		P-14554	-
		S4442	S4442
		35119	35119
PARTY'S NAME	SAGAR ASIA PVT. LTD., RANGA REDDY		
PARTY'S DRAWING No.	AS PER AUTOCAD DRAWING-SAP 24200		
ALLOY & TEMPER	6063 T5		
DESCRIPTION	SCAFFOLDING SECTION-SLOTTED TUBE		