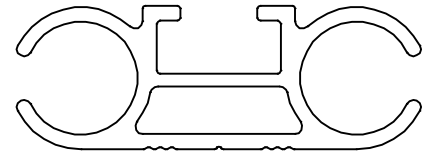


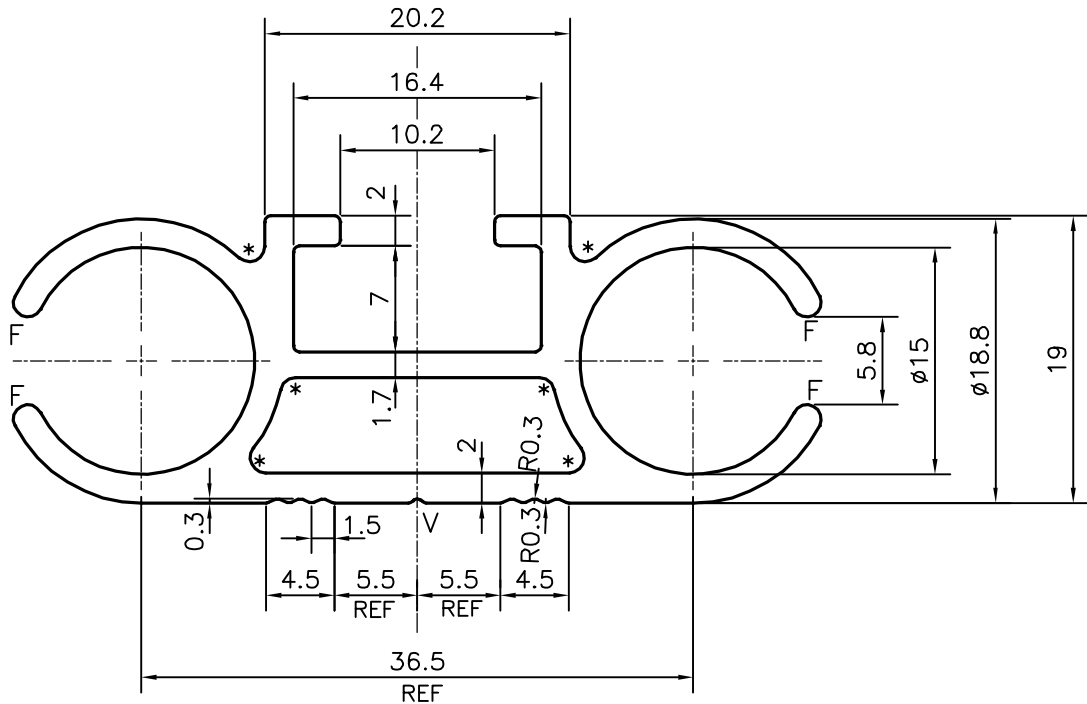
P-17875

S5698

35168



1:1



* = 1.0 RADIUS (6 PLACES)
 F = FULL RADIUS (4 PLACES)
 V = V GROOVE 0.3x90° (ONE PLACE)

TOLERANCES ON OVERALL DIMENSIONS OF HOLLOW SECTIONS

UPTO 20.0mm - ±0.30	UPTO 80.0mm - ±0.70	UPTO 180.0mm - ±1.27	1. STRAIGHTNESS=1.7mm/M 2. TWIST=1.7mm/M 3. ANGULARITY= ±2° 4. FLATNESS =0.006xWIDTH
UPTO 30.0mm - ±0.38	UPTO 100.0mm - ±0.80	UPTO 200.0mm - ±1.40	
UPTO 40.0mm - ±0.45	UPTO 120.0mm - ±0.90	UPTO 225.0mm - ±1.52	
UPTO 50.0mm - ±0.52	UPTO 140.0mm - ±1.00		
UPTO 60.0mm - ±0.60	UPTO 160.0mm - ±1.14		



SYMBOL OF QUALITY
AN ISO 9001 COMPANY

JINDAL ALUMINIUM LTD.
BANGALORE-560073 (INDIA)

	NAME	DATE
DRAWN	J.P.KAUSHIK	15-02-2018
CHECKED		
APPROVED	B.NATARAJ	28-02-2018

1. ALL DIMENSIONS ARE IN mm.
2. ROUND OFF ALL SHARP CORNERS WITH 0.40 mm.
3. TOLERANCES WILL BE AS PER IS:6477-1983 , UNLESS OTHERWISE SPECIFIED

SCALE	2:1
AREA mm ²	308.337
PERIMETER mm.	242.622
WEIGHT kg/m	0.833

PARTY'S NAME	AASPA DECORS, COIMBATORE	DRAWING No.	P-17875	SECTION No.	-
PARTY'S DRAWING No.	AS PER SAMPLE		S5698		S5698
ALLOY & TEMPER	HE9 WP		35168		35168
DESCRIPTION	MISC. SECTION				