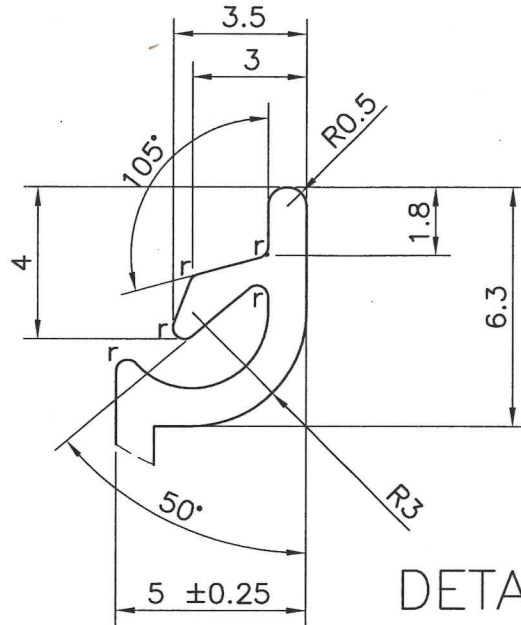
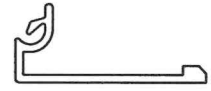
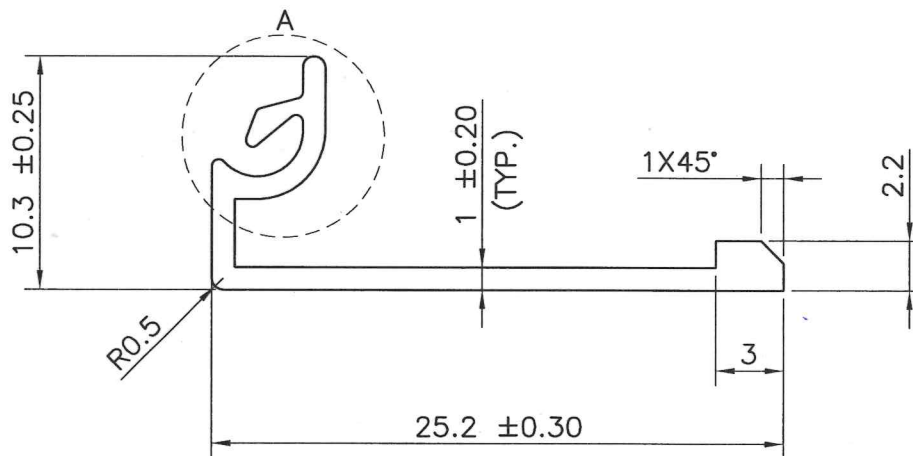


IAL-D-5436

35179

DETAIL A  
SCALE 5:1

SCALE 1:1



NOTE:-

$$r = 0.30R$$

TWIST =  $\pm 1/4^\circ/300\text{M.M./M.}$ 

STRAIGHTNESS = 1.5 M.M./MTR.

ANGULARITY =  $\pm 1.5^\circ$ SYMBOL OF QUALITY  
AN ISO 9001 COMPANYJINDAL ALUMINIUM LTD.  
BANGALORE-560073 (INDIA)

	NAME	DATE
DRAWN	ASHUTOSH	18-06-2022
CHECKED	<i>Amal</i>	18.6.22
APPROVED	<i>Man</i>	18/06/22

1. ALL DIMENSIONS ARE IN mm.
2. ROUND OFF ALL SHARP CORNERS WITH 0.40 mm.
3. TOLERANCES WILL BE AS PER BS:EN-755-9, UNLESS OTHERWISE SPECIFIED

SCALE	1:1,3:1&5:1
AREA mm <sup>2</sup>	43.60
PERIMETER mm.	84.73
WEIGHT kg/m	0.118

PARTY'S NAME M/S. KOHLI ALUMINIUM

PARTY'S DRAWING No. AS PER DRAWING

ALLOY &amp; TEMPER 6063-T6

DESCRIPTION --

DRAWING No. SECTION No.  
IAL-D-5436 35179