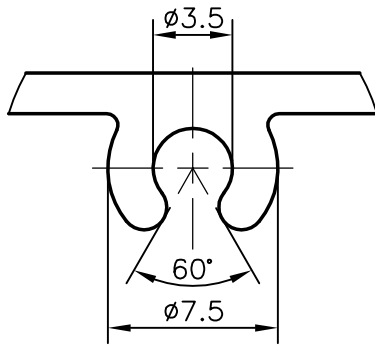


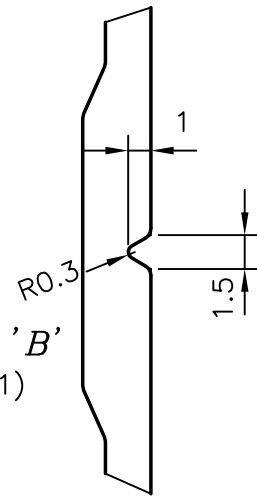
P-9545

S2339

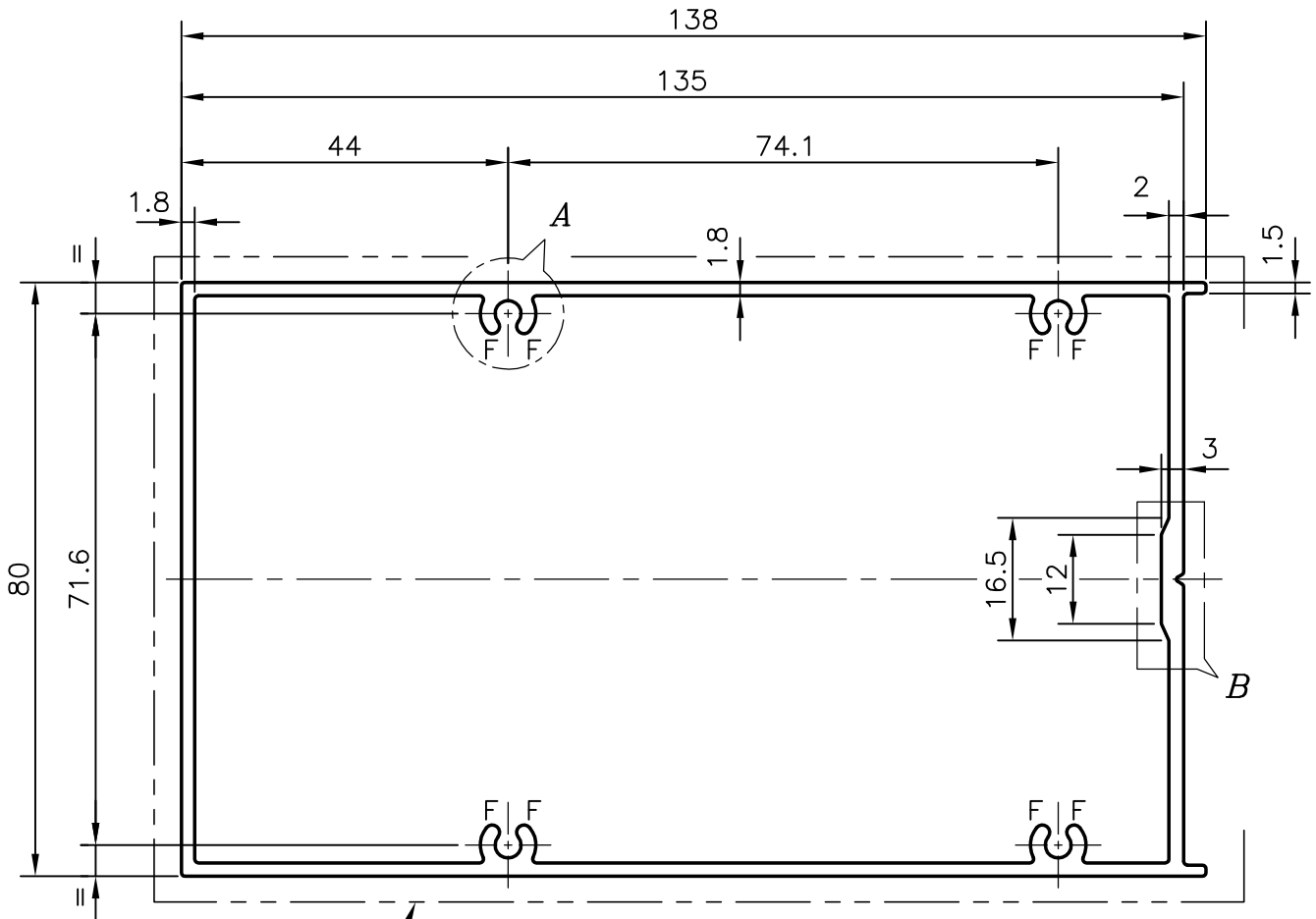
35571



DETAIL AT 'A'  
(SCALE:- 3:1)



DETAIL AT 'B'  
(SCALE:- 3:1)



EXPOSED SURFACE

1. F = FULL RADIUS (8 PLACES)
2. UNSPECIFIED CORNERS RADII:- 0.50 mm.



SYMBOL OF QUALITY  
AN ISO 9001 COMPANY

**JINDAL ALUMINIUM LTD.**  
BANGALORE-560073 (INDIA)

	NAME	DATE
DRAWN	RAGHAVENDRA	16-10-2009
CHECKED		
APPROVED	S.S.GARG	05-11-2009
SCALE		1:1 & 3:1
AREA mm <sup>2</sup>		889.79
PERIMETER mm.		441.266
WEIGHT kg/m		2.402
DRAWING No.	SECTION No.	
P-9545	-	
S2339	S2339	
35571	35571	

1. ALL DIMENSIONS ARE IN mm.
2. ROUND OFF ALL SHARP CORNERS WITH 0.50 mm.
3. TOLERANCES WILL BE AS PER IS:6477-1983 UNLESS OTHERWISE SPECIFIED

PARTY'S NAME	SP FABRICATORS PVT. LTD., NAVI MUMBAI
PARTY'S DRAWING No.	AL-620
ALLOY & TEMPER	6063 T6
DESCRIPTION	MID TRANSOM SECTION