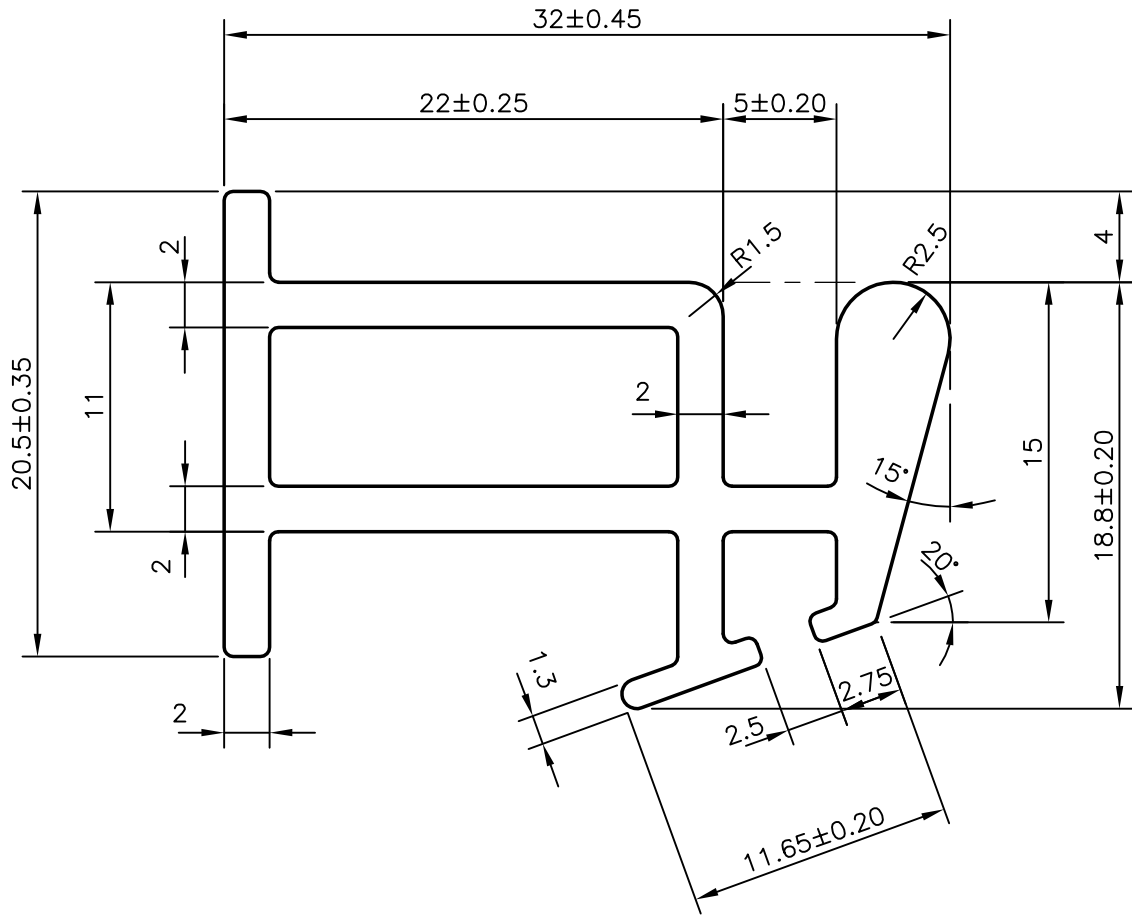
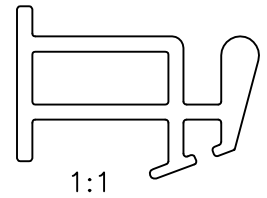


P-10159

S2615

35576



ANGULARITY =  $\pm 2^\circ$   
 TWIST = 1.70 mm/M  
 STRAIGHTNESS = 1.70 mm/M  
 FLATNESS =  $\pm 0.55$



SYMBOL OF QUALITY  
AN ISO 9001 COMPANY

**JINDAL ALUMINIUM LTD.**  
BANGALORE-560073 (INDIA)

	NAME	DATE
DRAWN	J.P.KAUSHIK	04-07-2010
CHECKED		
APPROVED	S.S.GARG	02-08-2010
SCALE		3:1
AREA mm <sup>2</sup>		218.211
PERIMETER mm.		146.755
WEIGHT kg/m		0.589
DRAWING No.	SECTION No.	
P-10159	-	
S2615	S2615	
35576	35576	

1. ALL DIMENSIONS ARE IN mm.
2. ROUND OFF ALL SHARP CORNERS WITH 0.40 mm.
3. TOLERANCES WILL BE AS PER BS:EN-12020-2 UNLESS OTHERWISE SPECIFIED

PARTY'S NAME AHLCONS INDIA PVT. LTD., NEW DELHI

PARTY'S DRAWING No. 11412

ALLOY & TEMPER 6063 T6

DESCRIPTION MISC. SECTION