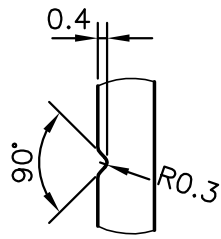


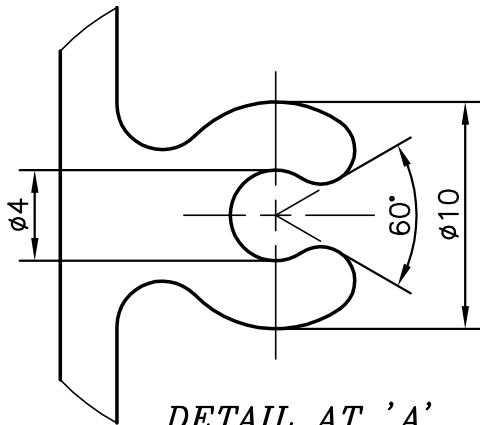
P-9558

S2346

35625

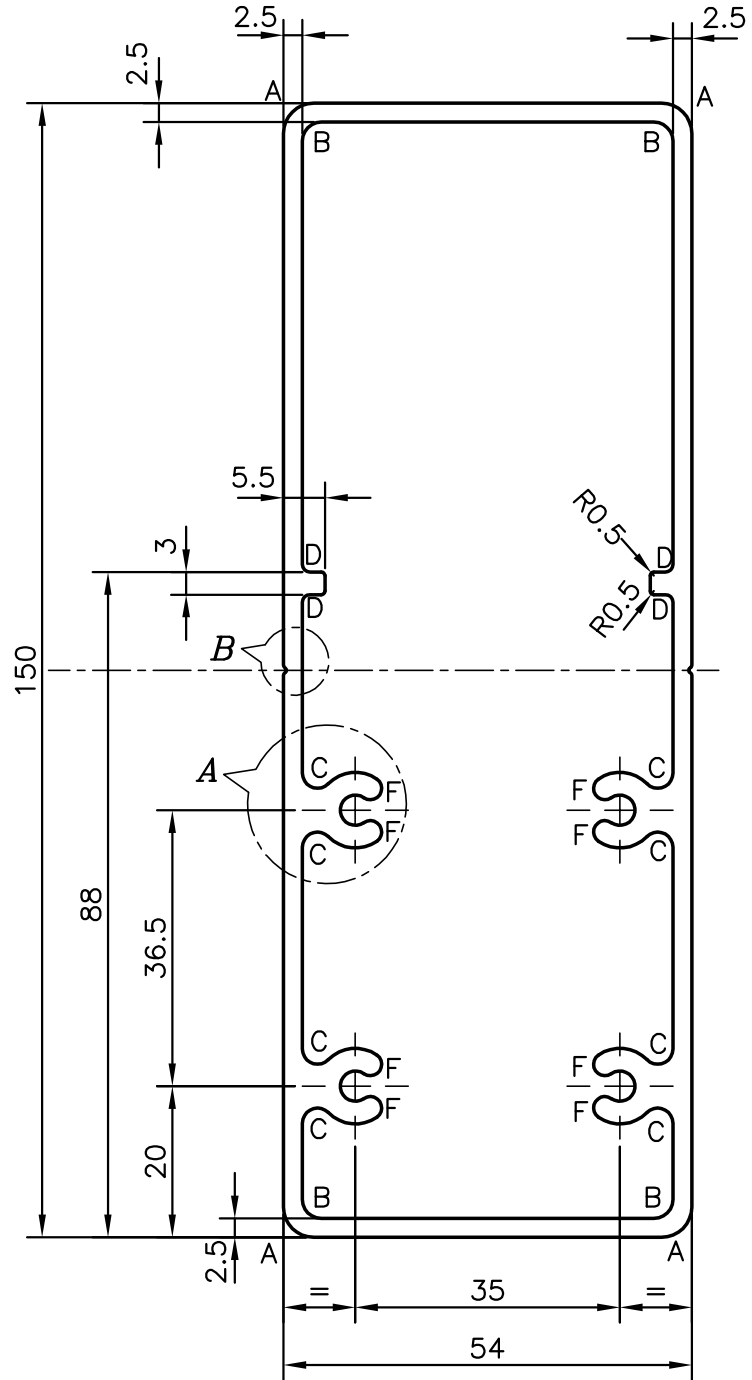


DETAIL AT 'B'  
(SCALE:- 3:1)



DETAIL AT 'A'  
(SCALE:- 3:1)

1. A = 4 mm. RADIUS (4)
2. B = 2.5 mm. RADIUS (4)
3. C = 2 mm. RADIUS (8)
4. D = 1.0 mm. RADIUS (4)
5. F = FULL RADIUS (8)



SYMBOL OF QUALITY  
AN ISO 9001 COMPANY

**JINDAL ALUMINIUM LTD.**  
BANGALORE-560073 (INDIA)

	NAME	DATE
DRAWN	RAGHAVENDRA	19-10-2009
CHECKED		
APPROVED		

1. ALL DIMENSIONS ARE IN mm.
2. ROUND OFF ALL SHARP CORNERS WITH 0.40 mm.
3. TOLERANCES WILL BE AS PER IS:6477-1983 UNLESS OTHERWISE SPECIFIED

SCALE	1:1 & 3:1
AREA mm <sup>2</sup>	1276.712
PERIMETER mm.	401.675
WEIGHT kg/m	3.447

PARTY'S NAME: SP FABRICATORS PVT. LTD., NAVI MUMBAI

PARTY'S DRAWING No.: AL-633

ALLOY & TEMPER: 6063 T6

DESCRIPTION: EXPANSION SLEEVE SECTION

DRAWING No.	SECTION No.
P-9558	-
S2346	S2346
35625	35625