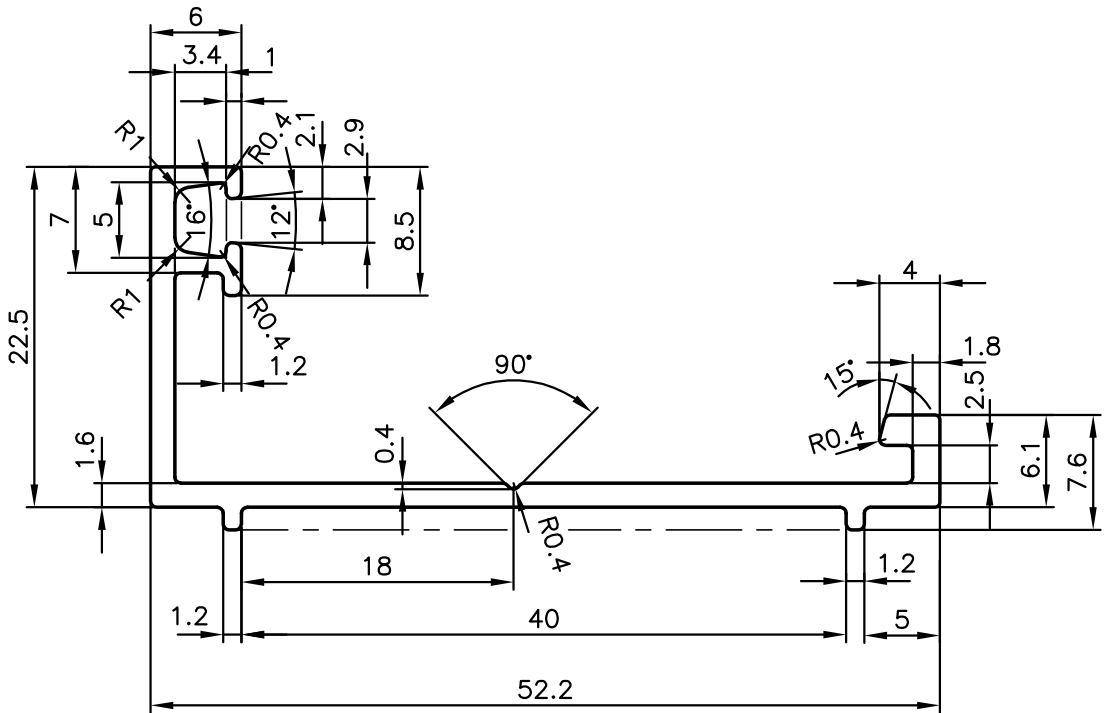
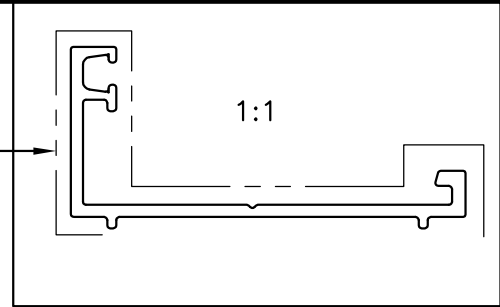


P-9550
S2351
35626

EXPOSED SURFACE



**JINDAL ALUMINIUM LTD.**  
BANGALORE-560073 (INDIA)

	NAME	DATE
DRAWN	J.P.KAUSHIK	25-10-2009
CHECKED		
APPROVED		

1. ALL DIMENSIONS ARE IN mm.
2. ROUND OFF ALL SHARP CORNERS WITH 0.50 mm.
3. TOLERANCES WILL BE AS PER IS:3965-1981 UNLESS OTHERWISE SPECIFIED

SCALE	2:1
AREA mm <sup>2</sup>	146.95
PERIMETER mm.	187.297
WEIGHT kg/m	0.397

PARTY'S NAME	SP FABRICATORS PVT. LTD., NAVI MUMBAI
PARTY'S DRAWING No.	AL-625
ALLOY & TEMPER	6063 T6
DESCRIPTION	VENT OUTER PROFILE SECTION

DRAWING No.	SECTION No.
P-9550	-
S2351	S2351
35626	35626