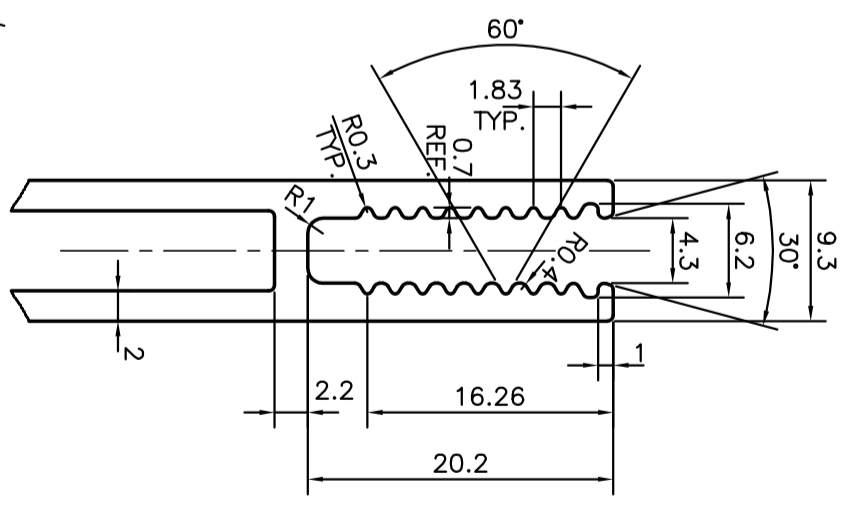
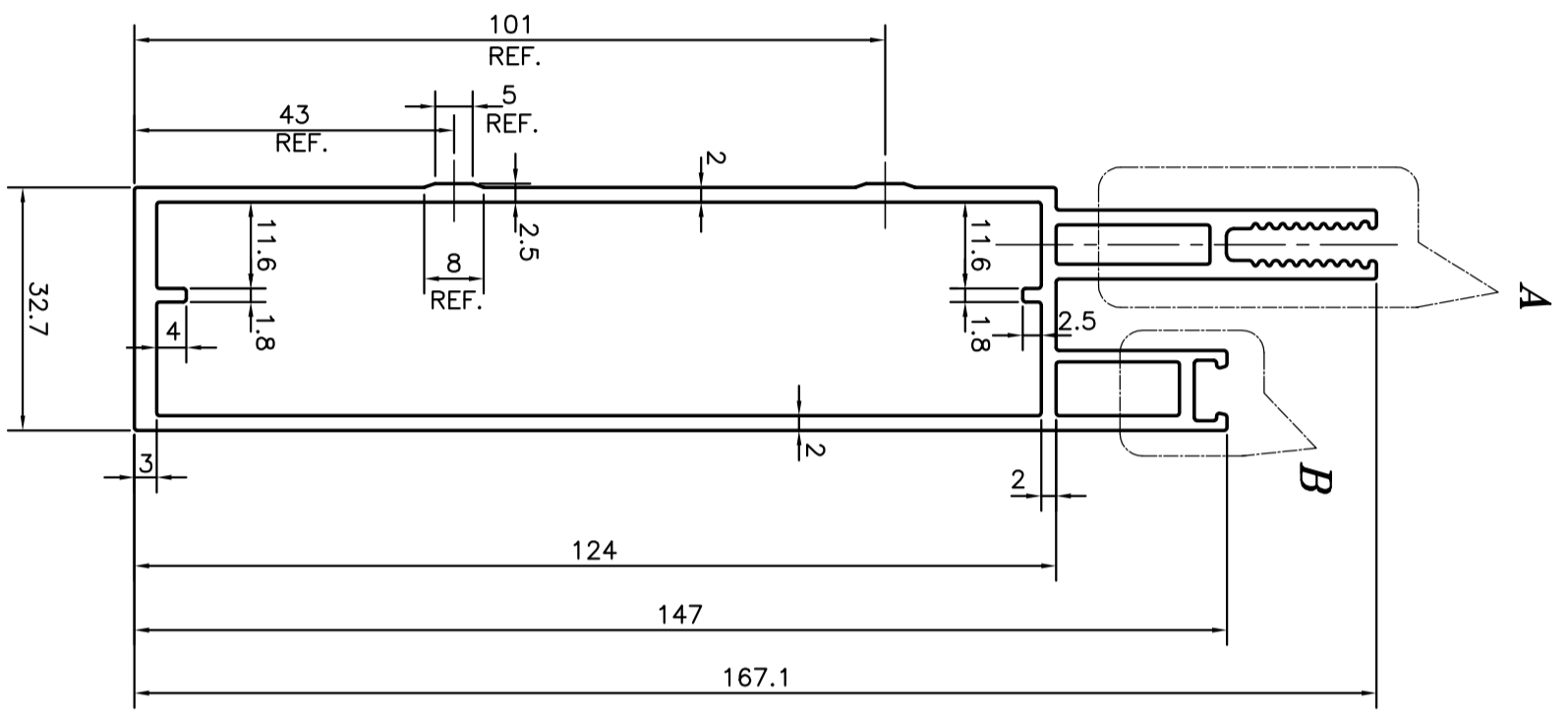
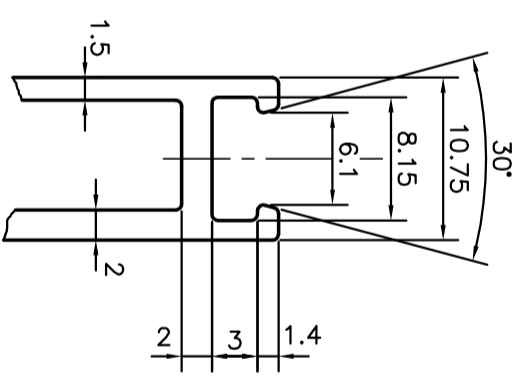


| |
|---------|
| P-11461 |
| S3156 |
| 35656 |



DETAIL OF 'A'
SCALE 2:1



DETAIL OF 'B'
SCALE 2:1

| | | | | |
|---|--|--------------------------------|----------------------------------|--|
| <p>SYMBOL OF QUALITY AN ISO 9001 COMPANY</p> | <p>JINDAL ALUMINIUM LTD. BANGALORE-560073 (INDIA)</p> | | <p>NAME PARVESH</p> | <p>DATE 10-01-2012</p> |
| | <p>1. ALL DIMENSIONS ARE IN mm. 2. ROUND OFF ALL SHARP CORNERS WITH 0.40 mm. 3. TOLERANCES WILL BE AS PER IS:6477-1983, UNLESS OTHERWISE SPECIFIED</p> | | <p>CHECKED</p> | |
| <p>PARTY'S NAME AJIT INDIA PVT. LTD., THANE</p> | <p>AS PER DRAWING</p> | <p>APPROVED S.S.GARG</p> | <p>SCALE 1:1</p> | <p>AREA mm² 945.563</p> |
| <p>PARTY'S DRAWING No. HE9 WP</p> | <p>HE9 WP</p> | <p>SCALE 1:1</p> | <p>PERIMETER mm. 507.214</p> | <p>WEIGHT kg/m 2.553</p> |
| <p>ALLOY & TEMPER HE9 WP</p> | <p>HE9 WP</p> | <p>DRAWING No. P-11461</p> | <p>SECTION No. -</p> | |
| <p>DESCRIPTION CURTAIN WALL SECTION</p> | | | | |