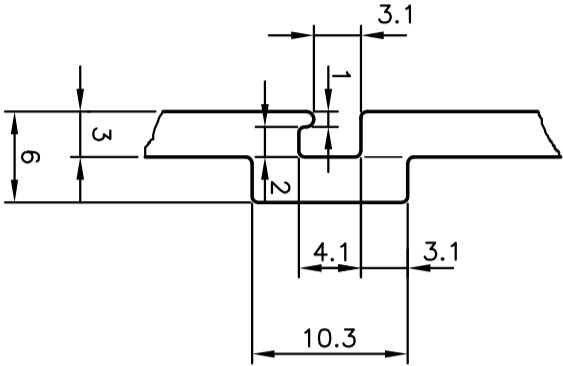
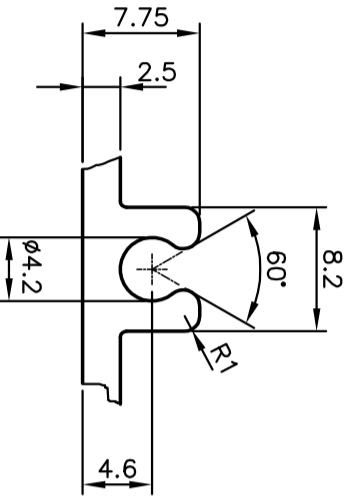


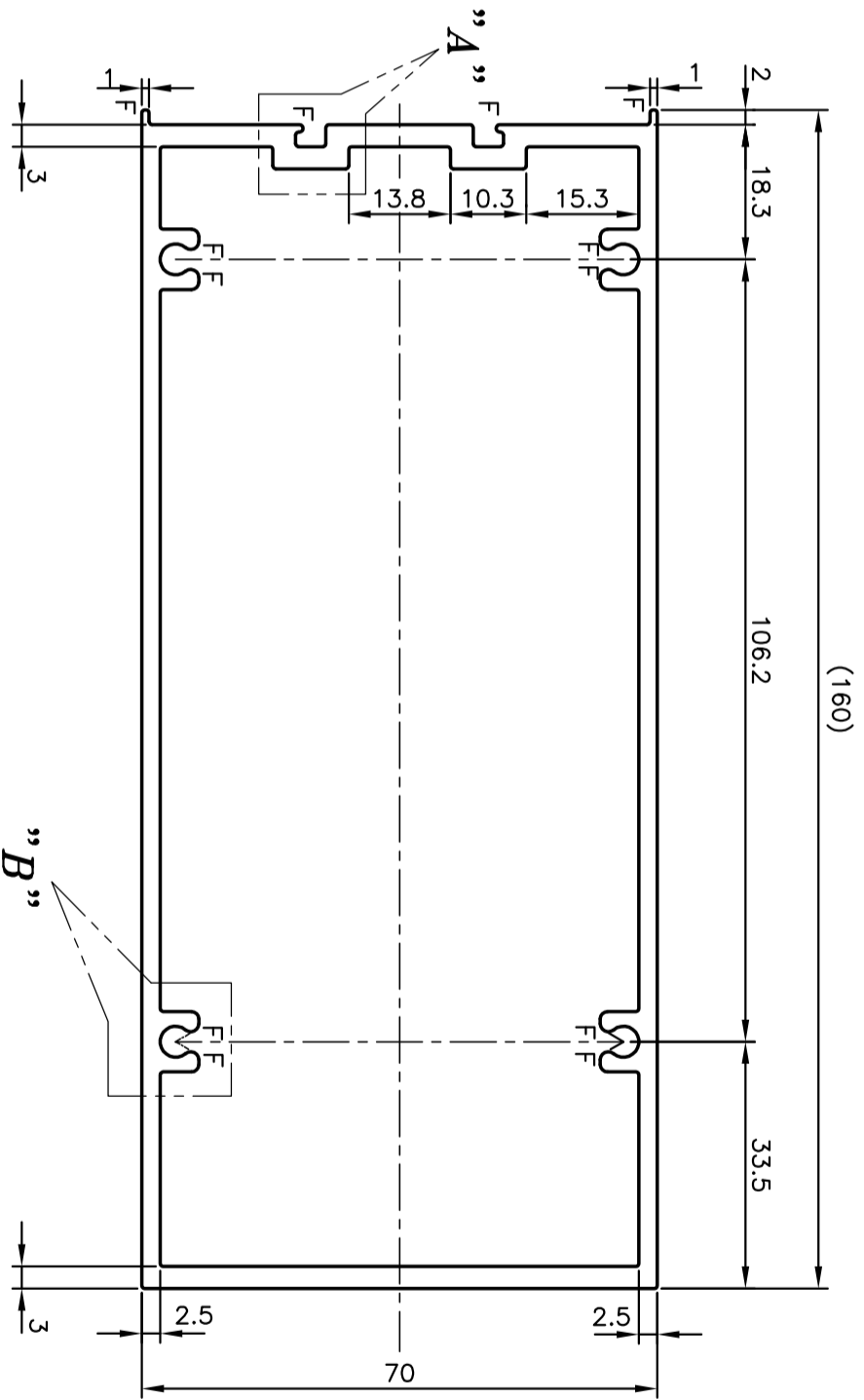
|          |
|----------|
| P-9808-1 |
| S2469    |
| 35658    |




**DETAIL "A"**  
(2:1)



**DETAIL "B"**  
(2:1)



F = FULLRADIUS (12 PLACES)

|   |   |                                 |  |
|---|---|---------------------------------|--|
| <br>SYMBOL OF QUALITY<br>AN ISO 9001 COMPANY | <b>JINDAL ALUMINIUM LTD.</b><br><i>BANGALORE-560073 (INDIA)</i> |                                 | DRAWN J.P. KAUSHIK 23-02-2010<br>CHECKED<br>APPROVED S.S. GARG 02-03-2010<br>SCALE 1:1<br>AREA mm <sup>2</sup> 1323.142<br>PERIMETER mm. 476.395<br>WEIGHT kg/m 3.572<br>DRAWING No. SECTION No. |
|   | PARTY'S NAME  | ALUPLEX INDIA PVT. LTD., MUMBAI |  |
|   | PARTY'S DRAWING No.   | AP-1070                         |  |
|   | ALLOY & TEMPER  | HE9 WP                          |  |
| DESCRIPTION   | CURTAIN WALL SECTION  |                                 |  |

1. ALL DIMENSIONS ARE IN mm.  
 2. ROUND OFF ALL SHARP CORNERS WITH 0.40 mm.  
 3. TOLERANCES WILL BE AS PER IS:6477-1983, UNLESS OTHERWISE SPECIFIED