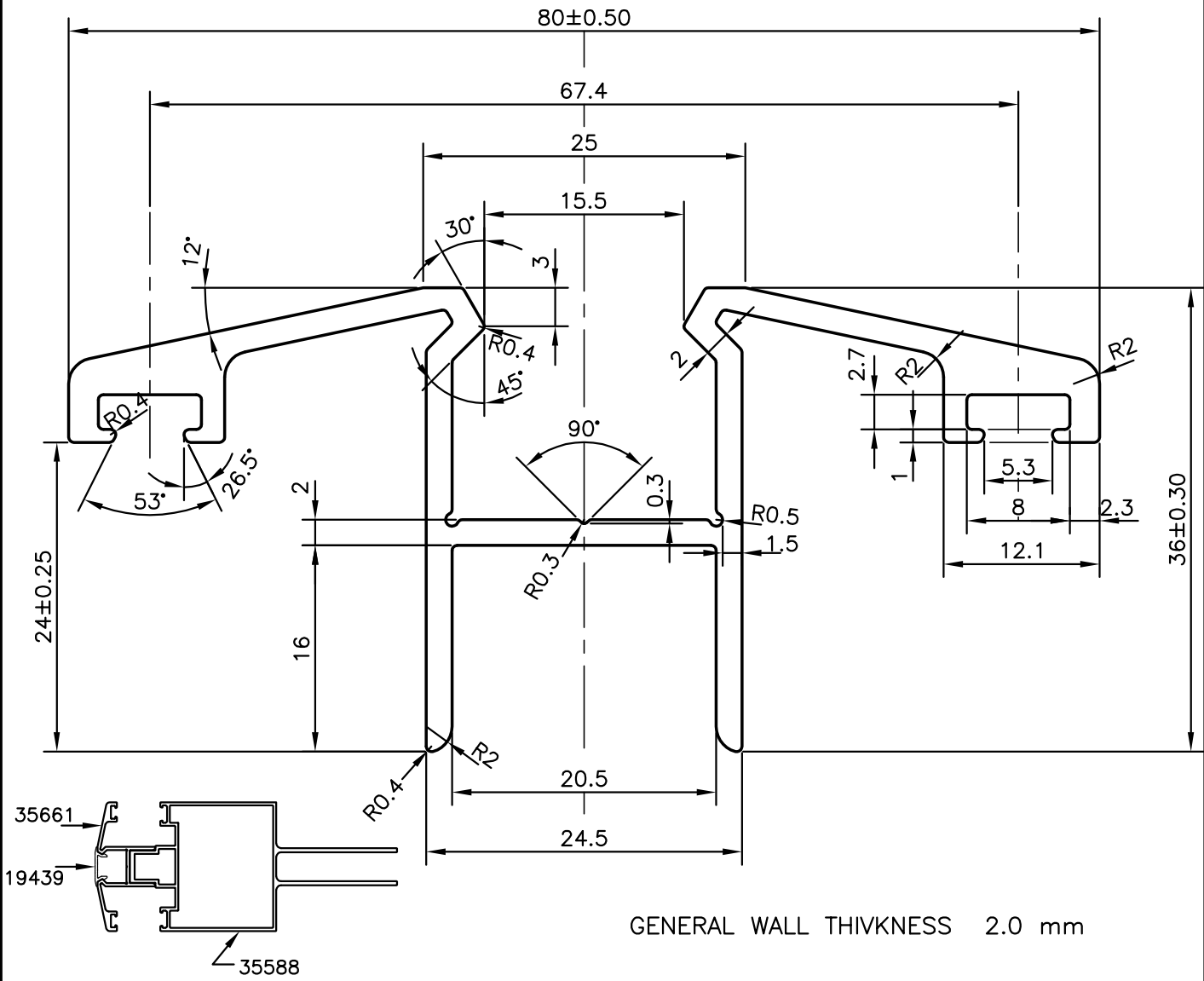
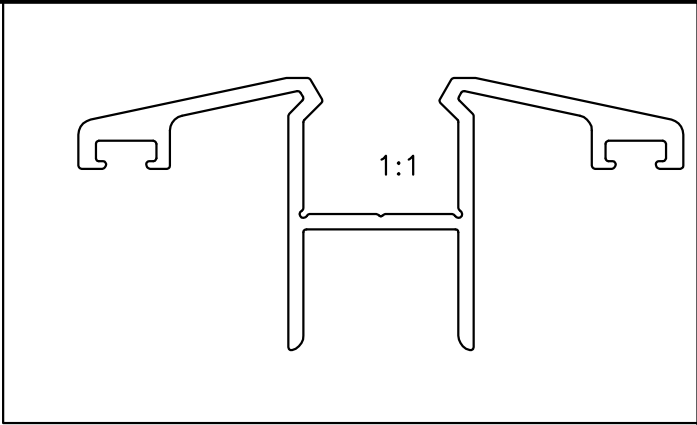


P-9734
S2476
35661



**JINDAL ALUMINIUM LTD.**  
**BANGALORE-560073 (INDIA)**

	NAME	DATE
DRAWN	J.P.KAUSHIK	11-01-2010
CHECKED		
APPROVED	S.S.GARG	03-03-2010
SCALE		2:1
AREA mm <sup>2</sup>		381.539
PERIMETER mm.		353.466
WEIGHT kg/m		1.030
DRAWING No.	SECTION No.	
P-9734	-	
S2476	S2476	
35661	35661	

1. ALL DIMENSIONS ARE IN mm.
2. ROUND OFF ALL SHARP CORNERS WITH 0.40 mm.
3. TOLERANCES WILL BE AS PER IS:3965-1981, UNLESS OTHERWISE SPECIFIED

PARTY'S NAME	SP FABRICATORS PVT. LTD., MUMBAI
PARTY'S DRAWING No.	AL- 641
ALLOY & TEMPER	6063 T6
DESCRIPTION	ADAPTER PROFILE