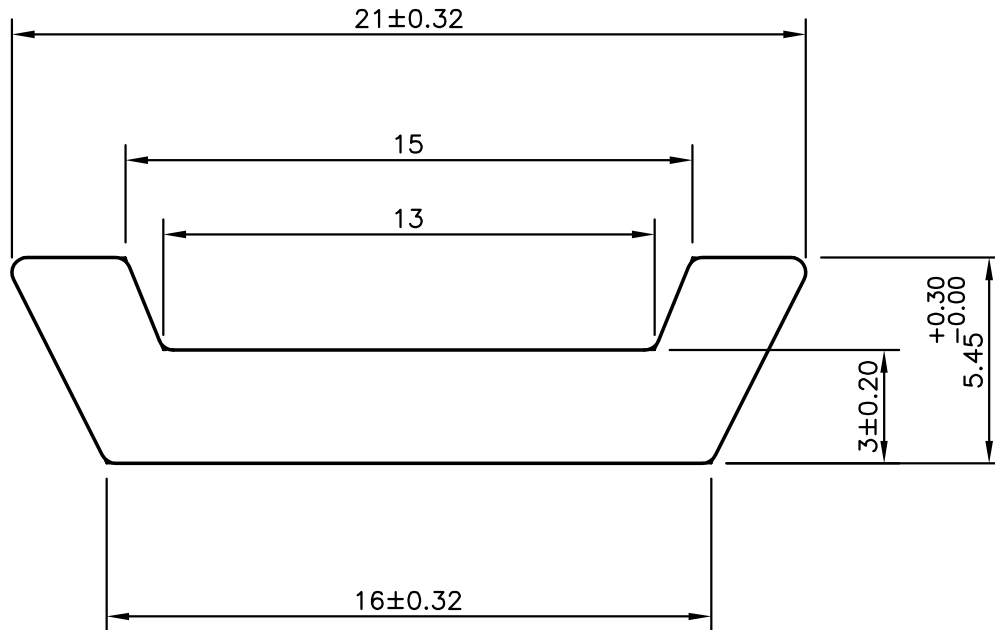
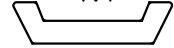


P-10158

S2614

35684

1:1



ANGULARITY = $\pm 2^\circ$
 TWIST = 1.70 mm/M
 STRAIGHTNESS = 1.70 mm/M
 FLATNESS = ± 0.55



SYMBOL OF QUALITY
AN ISO 9001 COMPANY

JINDAL ALUMINIUM LTD.
BANGALORE-560073 (INDIA)

1. ALL DIMENSIONS ARE IN mm.
2. ROUND OFF ALL SHARP CORNERS WITH 0.40 mm.
3. TOLERANCES WILL BE AS PER BS:EN-12020-2 UNLESS OTHERWISE SPECIFIED

PARTY'S NAME: AHLCONS INDIA PVT. LTD., NEW DELHI

PARTY'S DRAWING No.: AS PER DRAWING

ALLOY & TEMPER: 6063 T6

DESCRIPTION: MISC. SECTION

	NAME	DATE
DRAWN	J.P.KAUSHIK	04-07-2010
CHECKED		
APPROVED	S.S.GARG	02-08-2010
SCALE		5:1
AREA mm ²		67.673
PERIMETER mm.		51.673
WEIGHT kg/m		0.183
DRAWING No.	SECTION No.	
P-10158	-	
S2614	S2614	
35684	35684	