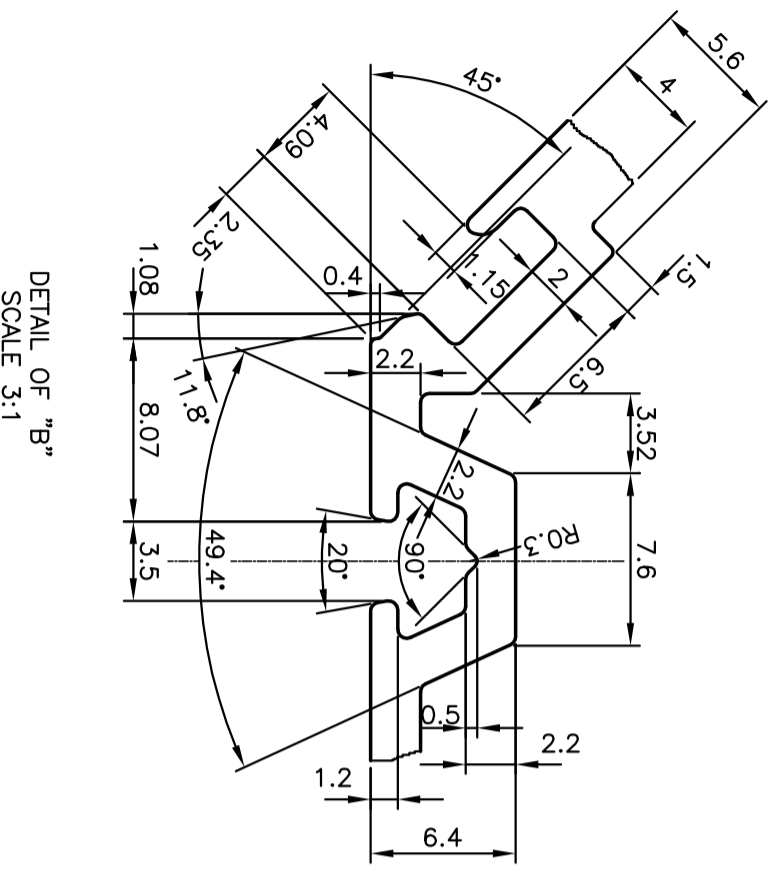



DETAIL OF "A"  
SCALE 3:1



DETAIL OF "B"  
SCALE 3:1

TOLERANCES ON OVERALL WIDTHS & WIDTHS ACROSS FLATS OF BARS, & REGULAR SECTIONS	
UPTO 6.40mm - ±0.20	UPTO 32.0mm - ±0.38
UPTO 10.0mm - ±0.23	UPTO 50.0mm - ±0.46
UPTO 12.0mm - ±0.25	UPTO 60.0mm - ±0.53
UPTO 16.0mm - ±0.28	UPTO 80.0mm - ±0.69
UPTO 25.0mm - ±0.30	UPTO 100.0mm - ±0.75
	UPTO 120.0mm - ±0.85
	UPTO 160.0mm - ±1.02
	UPTO 200.0mm - ±1.14
	UPTO 250.0mm - ±1.40
	UPTO 300.0mm - ±1.65
	UPTO 320.00mm - ±1.70

 <p>SYMBOL OF QUALITY AN ISO 9001 COMPANY</p>		<p><b>JINDAL ALUMINIUM LTD.</b> BANGALORE-560073 (INDIA)</p>	
<p>1. ALL DIMENSIONS ARE IN mm. 2. ROUND OFF ALL SHARP CORNERS WITH 0.40 mm. 3. TOLERANCES WILL BE AS PER IS:6477-1983 UNLESS OTHERWISE SPECIFIED</p>		<p>SCALE 1:1</p>	
<p>PARTY'S NAME SP FABRICATORS PVT. LTD., MUMBAI</p>		<p>AREA mm<sup>2</sup> 1869.314</p>	
<p>PARTY'S DRAWING No. AL-758</p>		<p>PERIMETER mm. 845.604</p>	
<p>ALLOY &amp; TEMPER 6063 T6</p>		<p>WEIGHT kg/m 5.047</p>	
<p>DESCRIPTION INWARD CORNER (FEMALE)</p>		<p>DRAWING No. P-10531-3</p>	
		<p>SECTION No. -</p>	
		<p>DRAWING No. S2792</p>	
		<p>DRAWING No. 35702</p>	