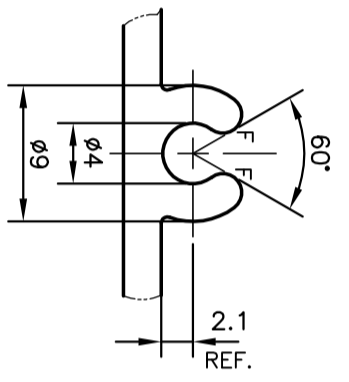
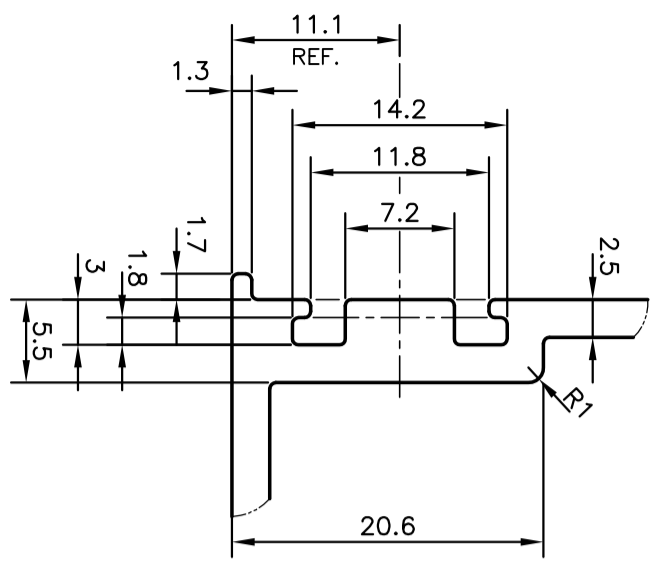
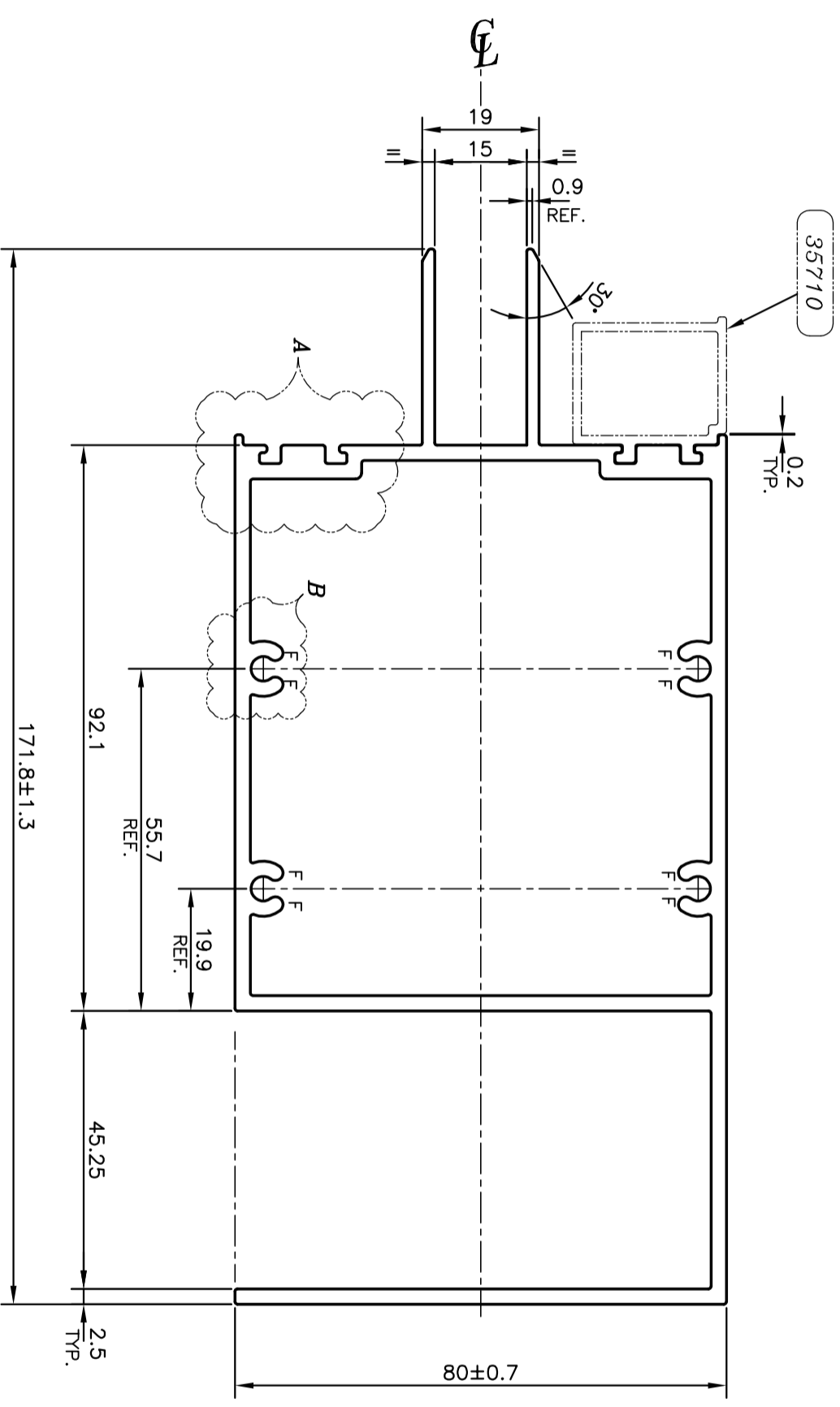


| |
|---------|
| P-11861 |
| S3434 |
| 35732 |



F = FULL RADIUS (8 PLACES)

DETAIL OF "A"
SCALE 2:1

DETAIL OF "B"
SCALE 2:1

| | | | | | |
|--|---|-------------|-----------------|------------|-------------|
| <p>SYMBOL OF QUALITY AN ISO 9001 COMPANY</p> | <p>JINDAL ALUMINIUM LTD. BANGALORE-560073 (INDIA)</p> | | DRAWN | NAME | DATE |
| | <p>1. ALL DIMENSIONS ARE IN mm. 2. ROUND OFF ALL SHARP CORNERS WITH 0.40 mm. 3. TOLERANCES WILL BE AS PER BS:EN-755-9, UNLESS OTHERWISE SPECIFIED</p> | | CHECKED | PARVESH | 22-06-2012 |
| PARTY'S NAME | SP FABRICATORS PVT. LTD., MUMBAI | APPROVED | S.S.GARG | 13-08-2012 | SCALE |
| PARTY'S DRAWING No. | AL-828 | AREA | mm ² | 1461.096 | PERIMETER |
| ALLOY & TEMPER | 6063 T6 | PERIMETER | mm. | 754.155 | WEIGHT |
| DESCRIPTION | CURTAIN WALL SECTION - MID TRANSOM | WEIGHT | kg/m | 3.945 | DRAWING No. |
| | | DRAWING No. | | | SECTION No. |
| | | P-11861 | | | |
| | | S3434 | | | |
| | | 35732 | | | |