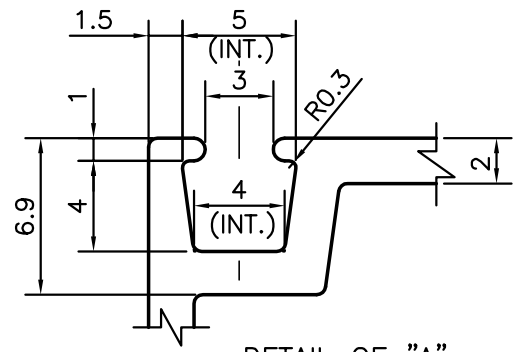
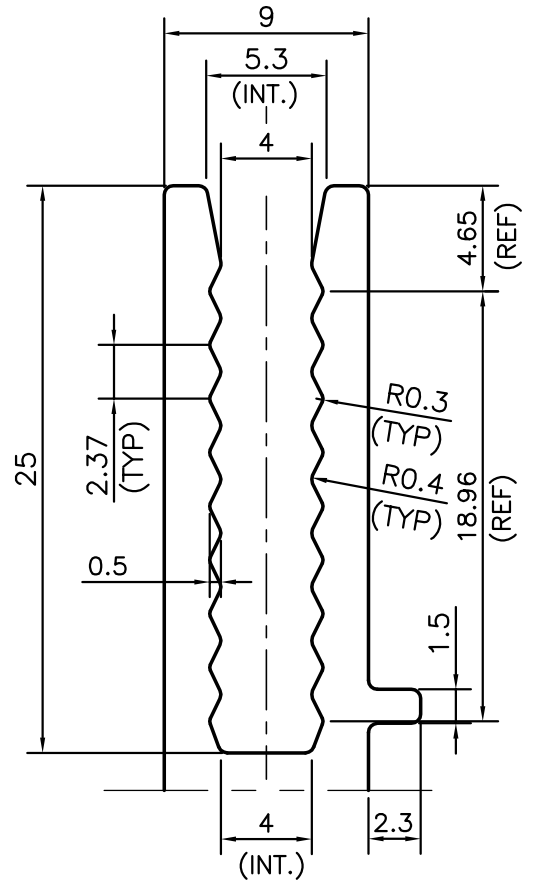


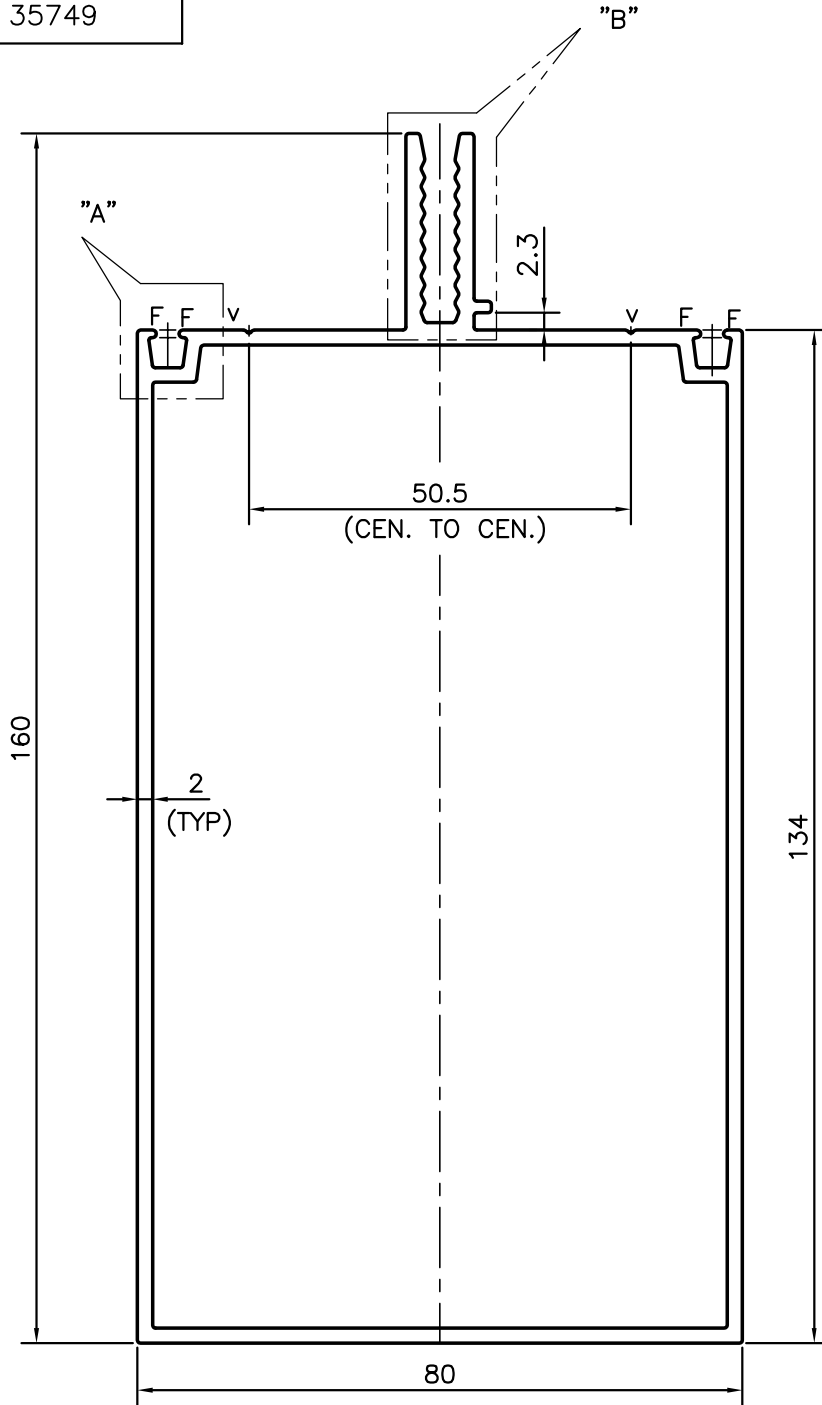
|         |
|---------|
| P-12396 |
| S3609   |
| 35749   |




DETAIL OF "A"  
SCALE 3:1



DETAIL OF "B"  
SCALE 3:1



F = FULL RADIUS (4 PLACES)  
V = V-GROOVE 0.4x90° (2 PLACES)

|   |  |                      |                      |
|---|--|----------------------|----------------------|
| <br>SYMBOL OF QUALITY<br>AN ISO 9001 COMPANY                       | <b>JINDAL ALUMINIUM LTD.</b><br>BANGALORE-560073 (INDIA) | NAME                 | DATE                 |
|   |  | DRAWN                | SRIVATHSA 29-12-2012 |
|   |  | CHECKED              |                      |
|   |  | APPROVED             | S.S.GARG 15-01-2013  |
| 1. ALL DIMENSIONS ARE IN mm.<br>2. ROUND OFF ALL SHARP CORNERS WITH 0.40 mm.<br>3. TOLERANCES WILL BE AS PER IS:6477-1983, UNLESS OTHERWISE SPECIFIED |  | SCALE                | 1:1                  |
|   |  | AREA mm <sup>2</sup> | 981.205              |
|   |  | PERIMETER mm.        | 558.872              |
|   |  | WEIGHT kg/m          | 2.649                |
| PARTY'S NAME  | R.K.BUILDING SOLUTIONS PVT.LTD., GHAZIABAD               | DRAWING No.          | SECTION No.          |
| PARTY'S DRAWING No.   | RKBS/NTAM/SEC./10  | P-12396              | -                    |
| ALLOY & TEMPER  | HE9 WP   | S3609                | S3609                |
| DESCRIPTION   | HOLLOW MULLION SECTION                                   | 35749                | 35749                |