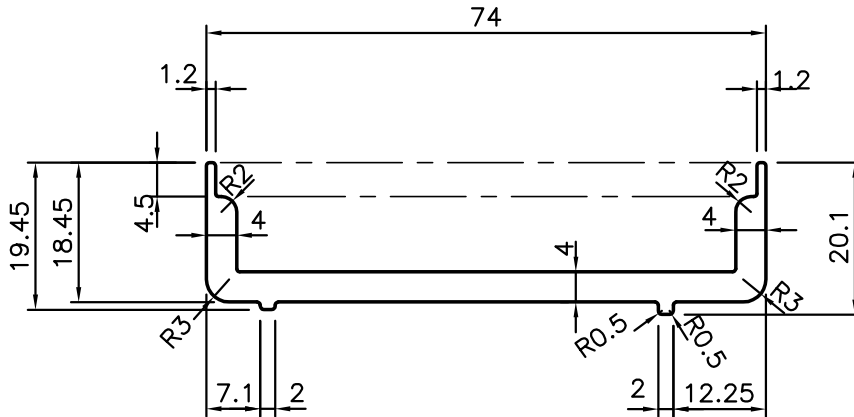


P-10197-2

S2621

35766



100% MANUAL CORRECTION IS REQUIRED  
TO MATCH WITH SEC. No :- 35765



SYMBOL OF QUALITY  
AN ISO 9001 COMPANY

**JINDAL ALUMINIUM LTD.**  
BANGALORE-560073 (INDIA)

	NAME	DATE
DRAWN	J.P.KAUSHIK	02-08-2010
CHECKED		
APPROVED	S.S.GARG	03-08-2010

1. ALL DIMENSIONS ARE IN mm.
2. ROUND OFF ALL SHARP CORNERS WITH 0.40 mm.
3. TOLERANCES WILL BE AS PER BS:EN-12020-2 UNLESS OTHERWISE SPECIFIED

SCALE	1:1
AREA mm <sup>2</sup>	385.863
PERIMETER mm.	211.789
WEIGHT kg/m	1.042

PARTY'S NAME	GWS ENGINEERS & FABRICATORS PVT.LTD.,MUMBAI
PARTY'S DRAWING No.	GWS-CAPT-A3-11
ALLOY & TEMPER	HE9 WP
DESCRIPTION	CURTAIN WALL-GUTTER SLEEVE

DRAWING No.	SECTION No.
P-10197-2	-
S2621	S2621
35766	35766