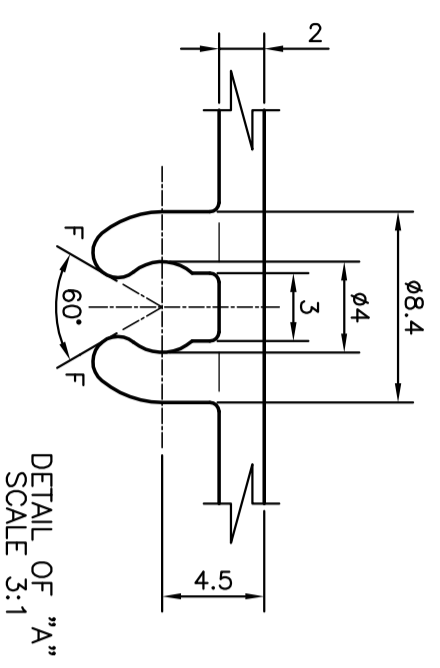
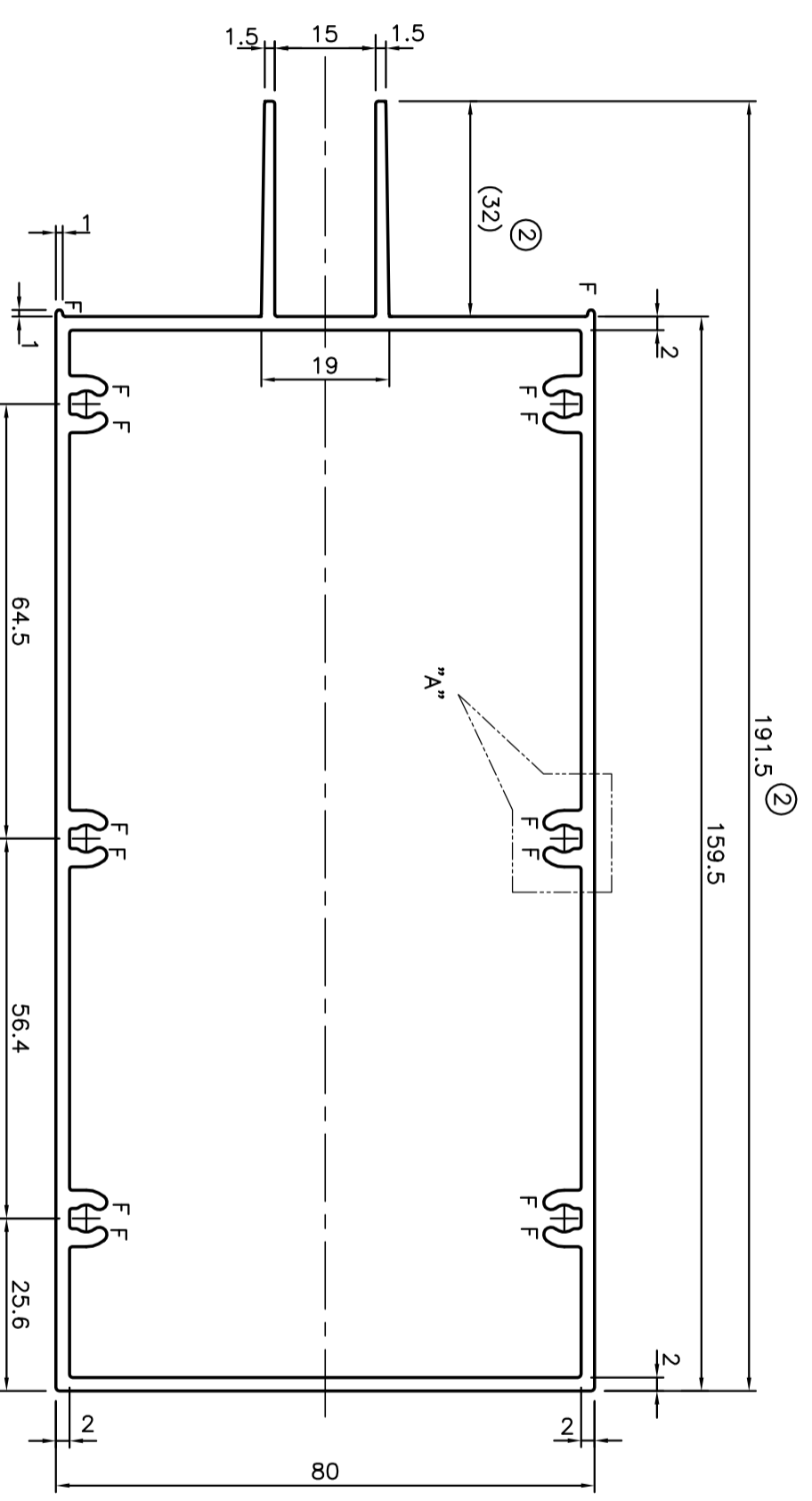



P-10201-2
S2623
35768



DETAIL OF "A"
SCALE 3:1

②
ISSUE-2 DIMENSION CHANGED FROM 189.5mm TO 191.5mm & DIMENSION 32.00mm ADDED FOR CUSTOMER REFERENCE. & WEIGHT ALSO CHANGED FROM 3.242kg/M TO 3.270kg/M

F = FULL RADIUS (14 PLACES)

 SYMBOL OF QUALITY AN ISO 9001 COMPANY		JINDAL ALUMINIUM LTD. BANGALORE-560073 (INDIA)		DRAWN J.P.KAUSHIK 22-10-2010	NAME J.P.KAUSHIK DATE 22-10-2010
1. ALL DIMENSIONS ARE IN mm. 2. ROUND OFF ALL SHARP CORNERS WITH 0.40 mm. 3. TOLERANCES WILL BE AS PER BS:EN-12020-2 UNLESS OTHERWISE SPECIFIED		SCALE 1:1	AREA mm ² 1211.143	CHECKED 	PERIMETER mm. 607.031
PARTY'S NAME GWS ENGINEERS & FABRICATORS PVT.LTD.,MUMBAI	PARTY'S DRAWING No. GWS-CAPT-A3-05	WEIGHT kg/m 3.270	PERIMETER mm. 607.031	APPROVED 	SECTION No. 3.270
ALLOY & TEMPER HE9 WP	DESCRIPTION CURTAIN WALL SECTION (TRANSOM)	DRAWING No. P-10201-2	SECTION No. -	DRAWING No. S2623	SECTION No. S2623-ISSUE-2
ALLOY & TEMPER HE9 WP	DESCRIPTION CURTAIN WALL SECTION (TRANSOM)	DRAWING No. 35768	SECTION No. -	DRAWING No. 35768	SECTION No. 35768