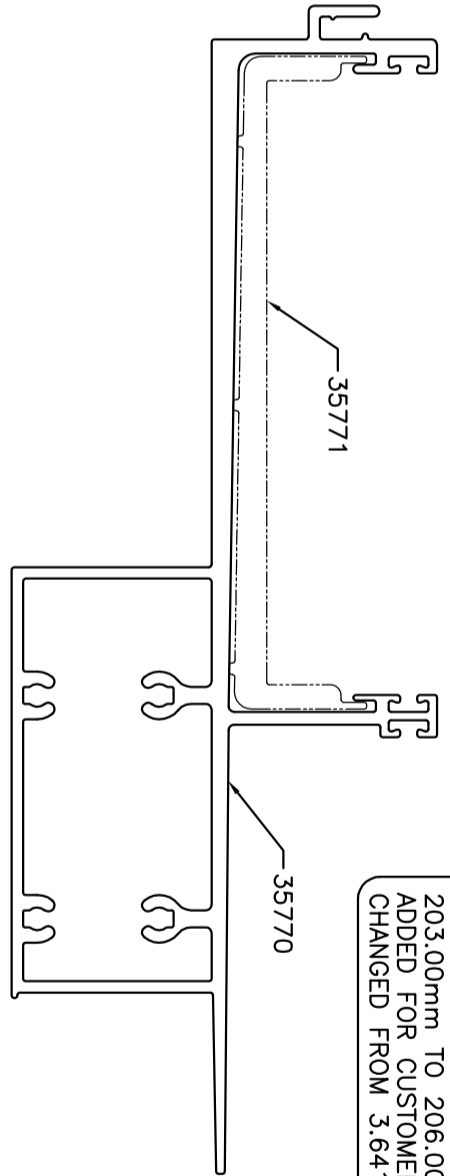
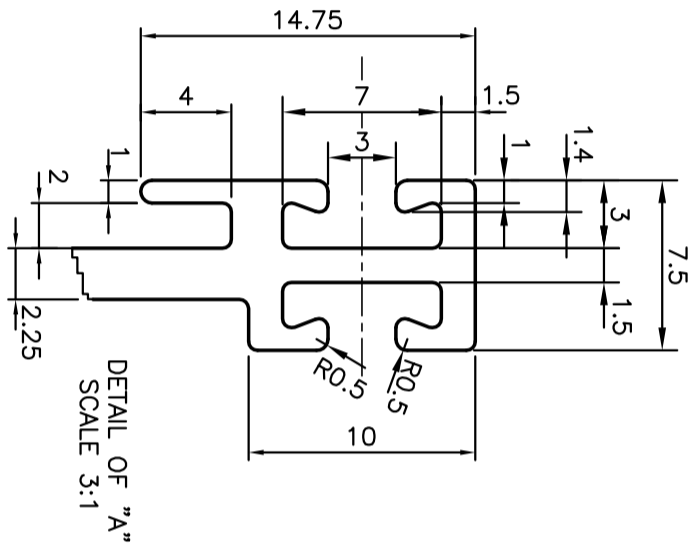
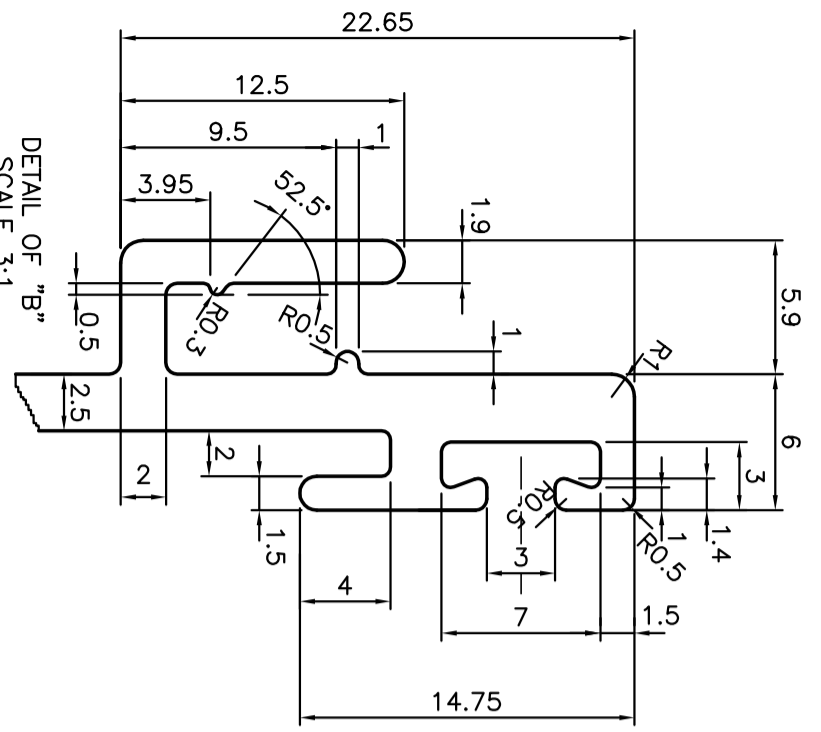
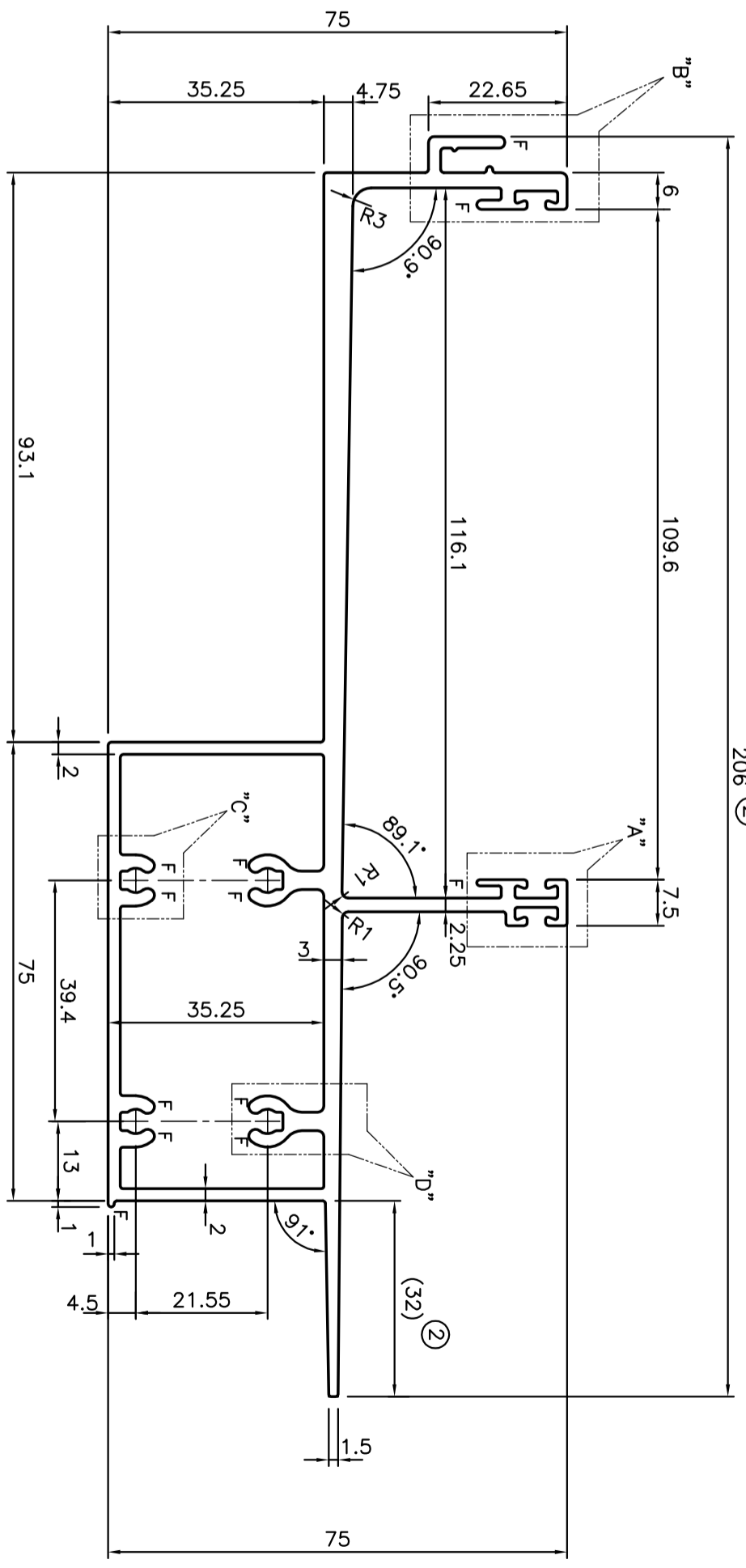
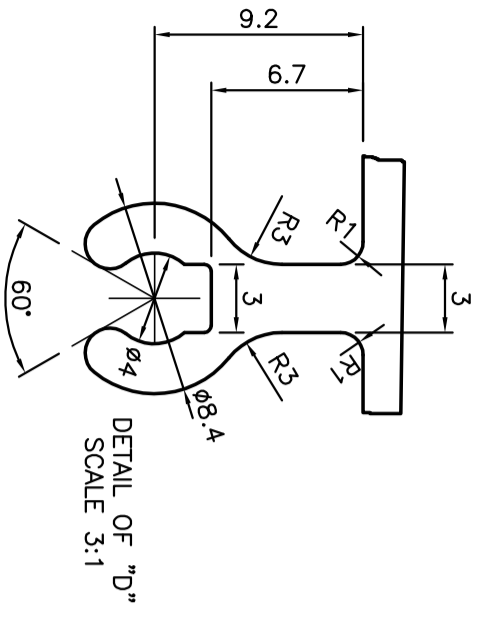
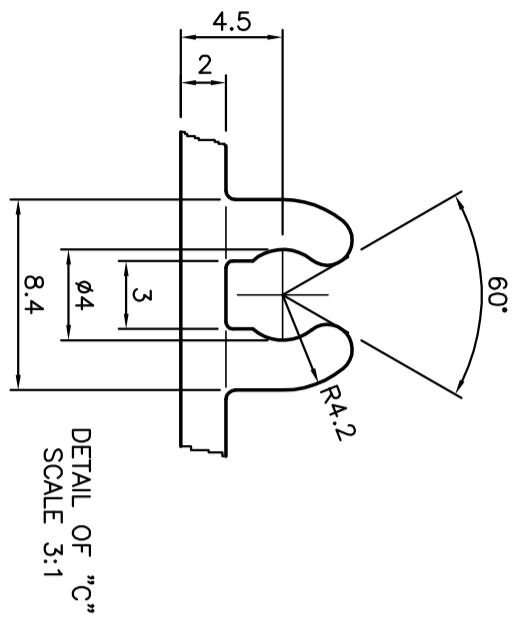


P-10205-2
S2625
35770

206 (2)



(2) ISSUE-2 DIMENSION CHANGED FROM 203.00mm TO 206.00mm & DIMENSION 32.00mm ADDED FOR CUSTOMER REFERENCE. & WEIGHT ALSO CHANGED FROM 3.641kg/M TO 3.659kg/M

<p>SYMBOL OF QUALITY AN ISO 9001 COMPANY</p>		<p>JINDAL ALUMINIUM LTD. BANGALORE-560073 (INDIA)</p>	
<p>1. ALL DIMENSIONS ARE IN mm. 2. ROUND OFF ALL SHARP CORNERS WITH 0.40 mm. 3. TOLERANCES WILL BE AS PER: EN-12020-2 UNLESS OTHERWISE SPECIFIED</p>		<p>SCALE 1:1</p>	<p>DATE 22-10-2010</p>
<p>PARTY'S NAME</p>	<p>GWS ENGINEERS & FABRICATORS PVT.LTD., MUMBAI</p>	<p>AREA mm²</p>	<p>1355.277</p>
<p>PARTY'S DRAWING No.</p>	<p>GWS-CAPT-A3-04</p>	<p>PERIMETER mm.</p>	<p>722.304</p>
<p>ALLOY & TEMPER</p>	<p>HE9 WP</p>	<p>WEIGHT kg/m</p>	<p>3.659</p>
<p>DESCRIPTION</p>	<p>CURTAIN WALL (GUTTER SECTION)</p>	<p>DRAWING No.</p>	<p>SECTION No.</p>
		<p>P-10205-2</p>	
		<p>S2625</p>	<p>S2625-ISSUE-2</p>
		<p>35770</p>	<p>35770</p>