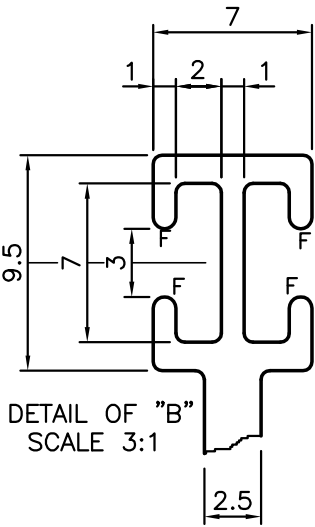
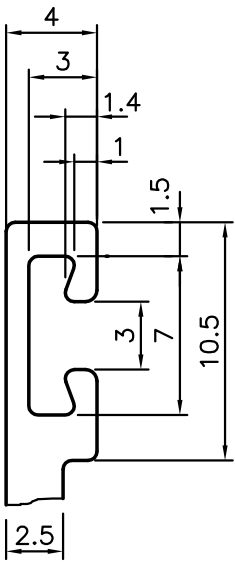


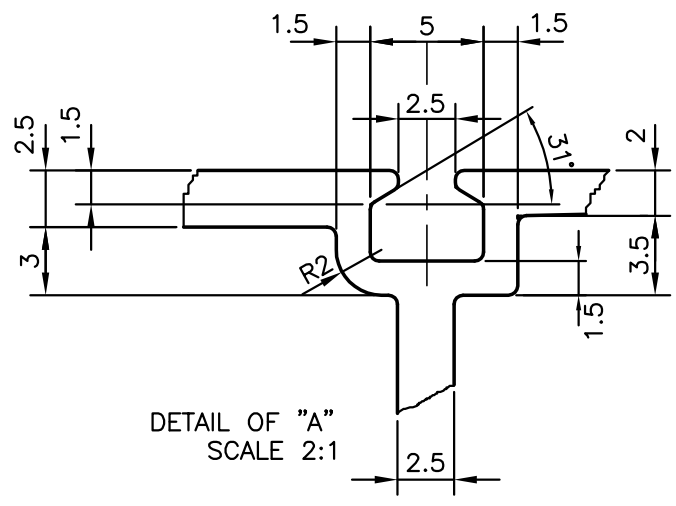
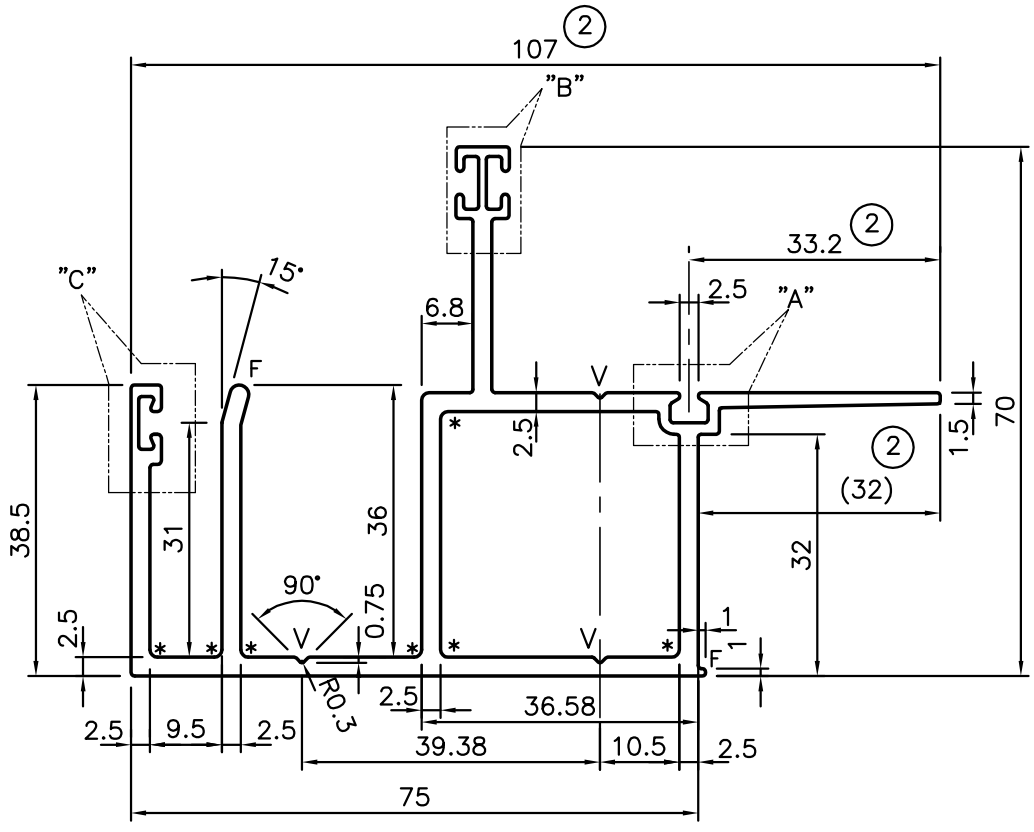
P-10199-3
S2647
35773

DETAIL OF "B"
SCALE 3:1



DETAIL OF "B"
SCALE 3:1

* = 1.0 RADIUS (7 PLACES)
F = FULL RADIUS (5 PLACES)
V = V GROOVE 0.75x90° (3 PLACES)



DETAIL OF "A"
SCALE 2:1

ISSUE-2 DIMENSION CHANGED FROM
30.20mm TO 33.20mm
104.00mm TO 107.00mm
& DIMENSION 32.00mm
ADDED FOR CUSTOMER REFERENCE. & WEIGHT ALSO
CHANGED FROM 2.056kg/M TO 2.071kg/M



JINDAL ALUMINIUM LTD.
BANGALORE-560073 (INDIA)

	NAME	DATE
DRAWN	J.P.KAUSHIK	23-10-2010
CHECKED		
APPROVED		
SCALE		1:1
AREA mm ²		766.887
PERIMETER mm.		555.377
WEIGHT kg/m		2.071
DRAWING No.	SECTION No.	
P-10199-3	-	
S2647	S2647-ISSUE-2	
35773	35773	

1. ALL DIMENSIONS ARE IN mm.
2. ROUND OFF ALL SHARP CORNERS WITH 0.40 mm.
3. TOLERANCES WILL BE AS PER BS:EN-12020-2 UNLESS OTHERWISE SPECIFIED

PARTY'S NAME	GWS ENGINEERS & FABRICATORS PVT.LTD.,MUMBAI
PARTY'S DRAWING No.	GWS-CAPT-A3-08
ALLOY & TEMPER	HE9 WP
DESCRIPTION	CURTAIN WALL-FEMALE MULLION