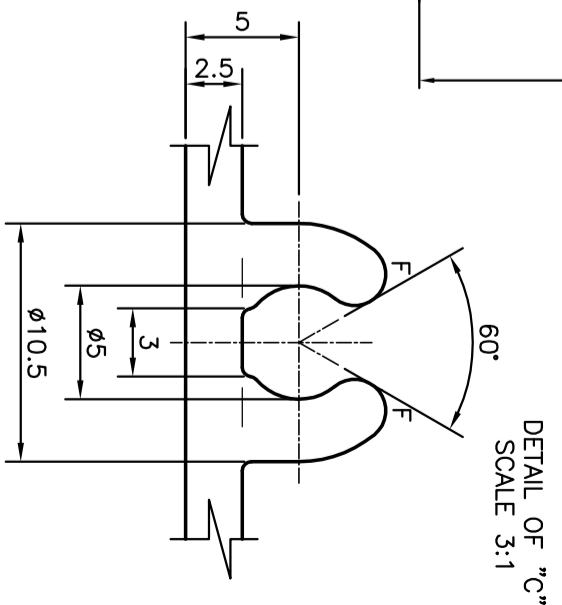
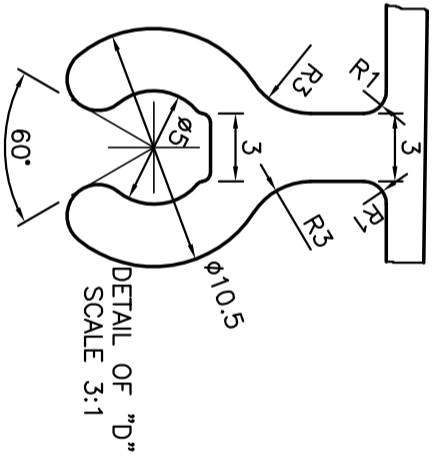
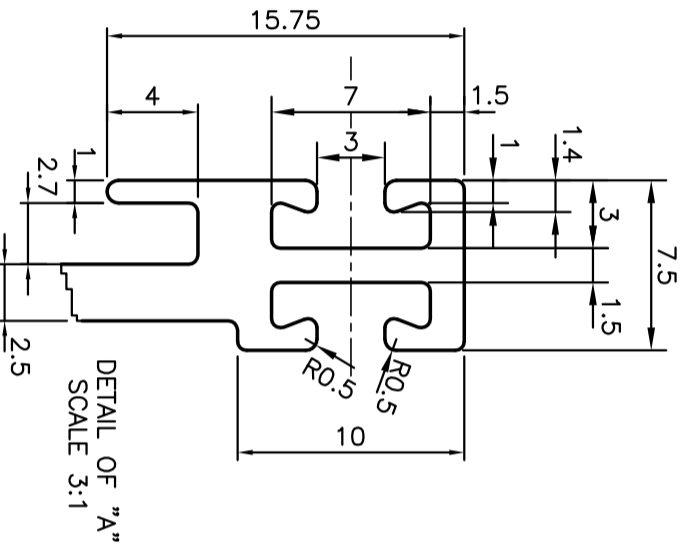
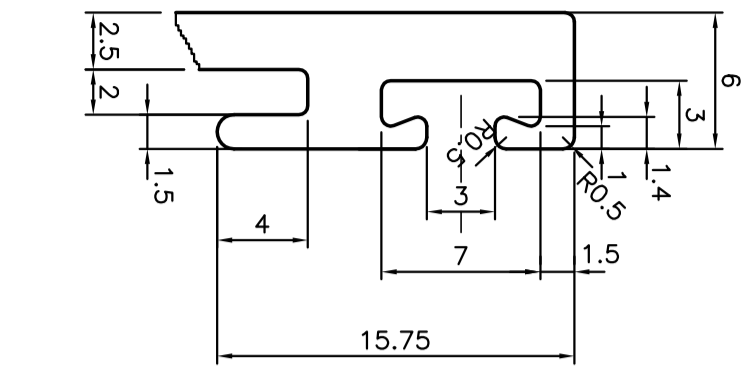
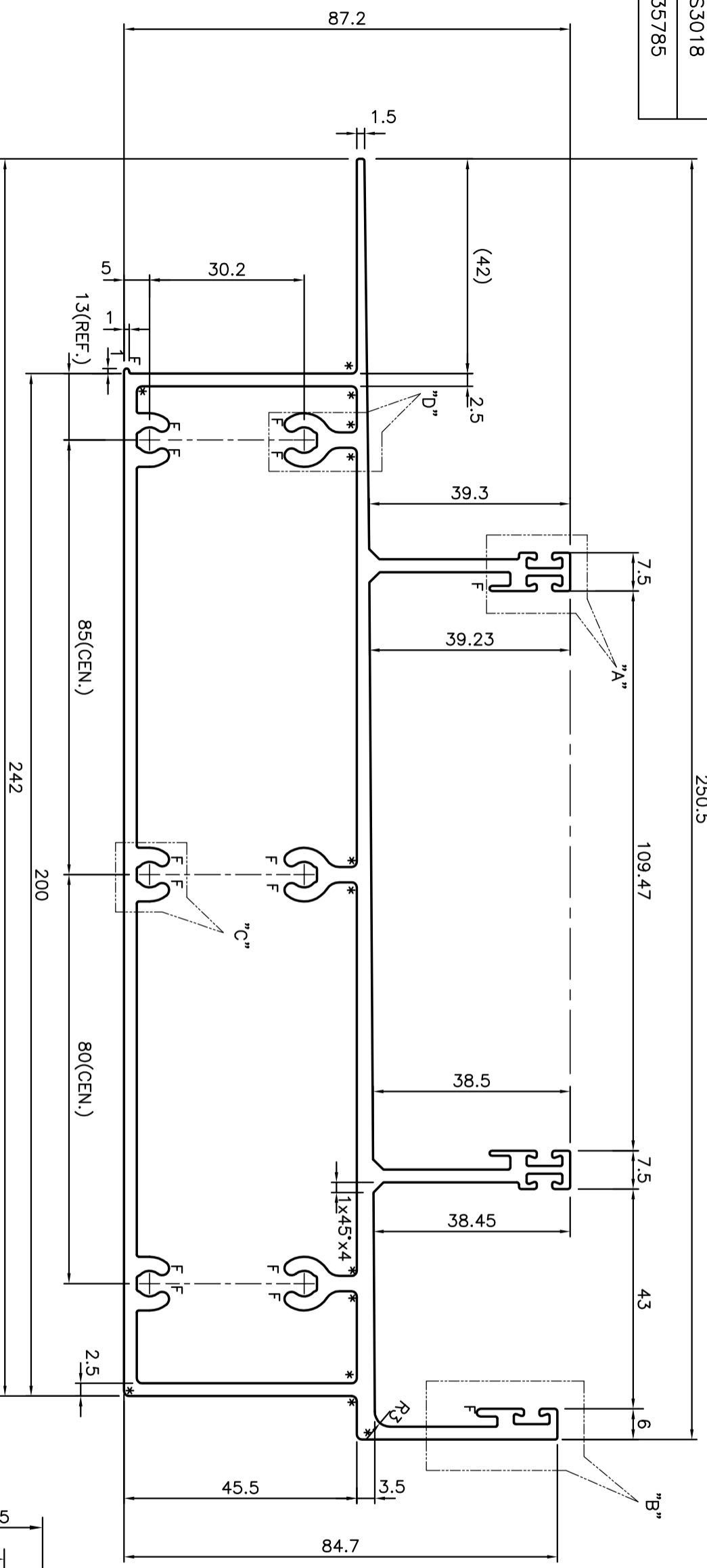



P-11092-2  
S3018  
35785

250.5



\* = 1.0 RADIUS (13 PLACES)  
F = FULL RADIUS (11 PLACES)

|  |  |                      |                        |
|--|--|----------------------|------------------------|
|  <p><b>JINDAL ALUMINIUM LTD.</b><br/>BANGALORE-560073 (INDIA)</p>         |  | NAME                 | DATE                   |
|  |  | DRAWN                | J.P.KAUSHIK 01-08-2011 |
| <p>1. ALL DIMENSIONS ARE IN mm.<br/>2. ROUND OFF ALL SHARP CORNERS WITH 0.40 mm.<br/>3. TOLERANCES WILL BE AS PER BS:EN-755-9 UNLESS OTHERWISE SPECIFIED</p> |  | CHECKED              |                        |
|  |  | APPROVED             | S.S.GARG 03-08-2011    |
| PARTY'S NAME   |  | SCALE                | 1:1                    |
| PARTY'S DRAWING No.  |  | AREA mm <sup>2</sup> | 2086.694               |
| ALLOY & TEMPER   |  | PERIMETER mm.        | 931.685                |
| DESCRIPTION  |  | WEIGHT kg/m          | 5.634                  |
| CURTAIN WALL (GUTTER SECTION)  |  | DRAWING No.          | SECTION No.            |
|  |  | P-11092-2            | -                      |
|  |  | S3018                | S3018                  |
|  |  | 35785                | 35785                  |

DETAIL OF "B"  
SCALE 3:1

DETAIL OF "A"  
SCALE 3:1

DETAIL OF "C"  
SCALE 3:1