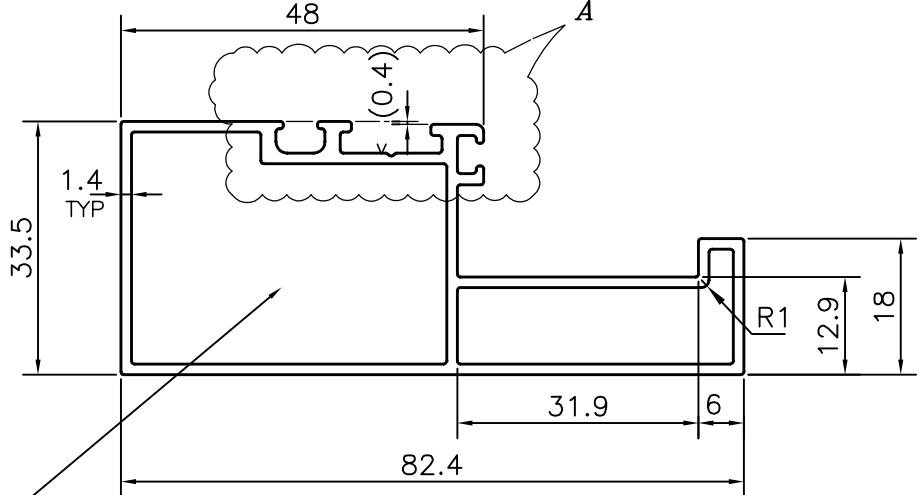
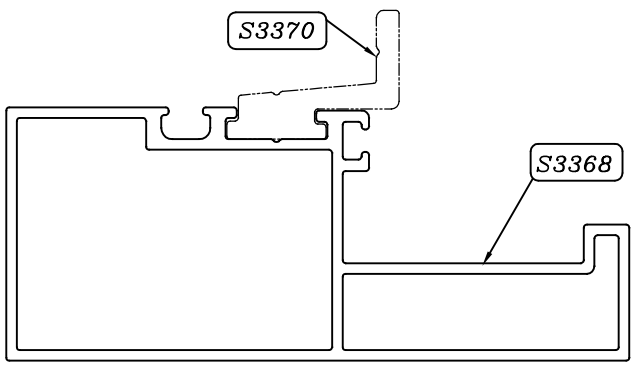
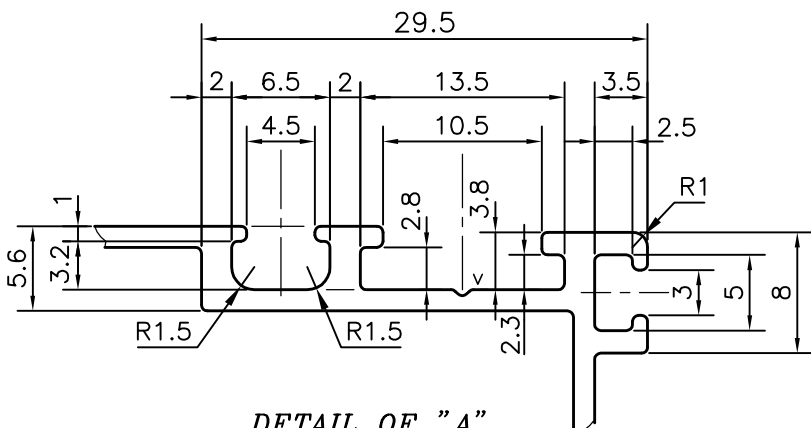


P-11809
S3368
35813




ISSUE (3) :-
 ONE RIB REMOVED AND
 WEIGHT ALSO CHANGED FROM 1.192 KG/m TO 1.034 KG/m.

ISSUE (2) :-
 ONE RIB ADDED AND
 WEIGHT ALSO CHANGED FROM 1.153 KG/m TO 1.192 KG/m.



DETAIL OF "A"
 SCALE 2:1

V = VEE GROOVE 0.4x90°(1 PLACES)

 SYMBOL OF QUALITY AN ISO 9001 COMPANY	JINDAL ALUMINIUM LTD. BANGALORE-560073 (INDIA)	NAME	DATE
		DRAWN	PARVESH 25-07-2012
		CHECKED	
		APPROVED	S.S.GARG 27-07-2012
1. ALL DIMENSIONS ARE IN mm. 2. ROUND OFF ALL SHARP CORNERS WITH 0.40 mm. 3. TOLERANCES WILL BE AS PER IS:6477-1983, UNLESS OTHERWISE SPECIFIED		SCALE	1:1
		AREA mm ²	382.851
		PERIMETER mm.	279.224
		WEIGHT kg/m	1.034
PARTY'S NAME	HATIM GLAZING & CLADDING PVT. LTD., MUMBAI	DRAWING No.	SECTION No.
PARTY'S DRAWING No.	ALU. SGU SASH SECTION	P-11809	-
ALLOY & TEMPER	HE9 WP	S3368	S3368 (ISSUE-3)
		35813	35813
DESCRIPTION	CURTAIN WALL SECTION		