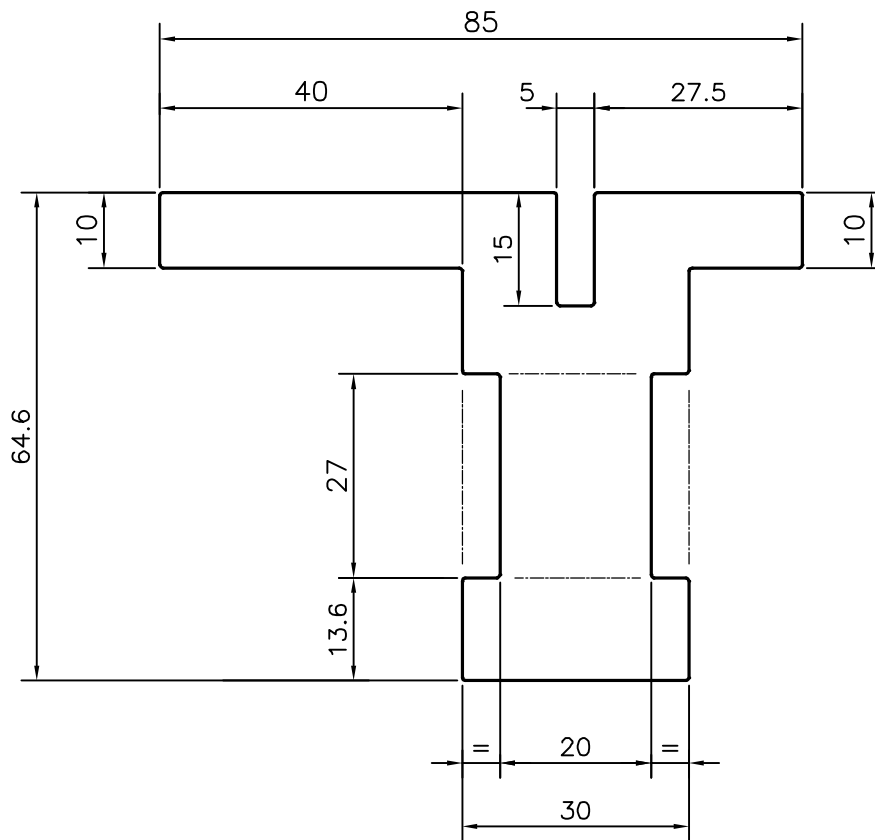


P-13212

S3944

35883



TOLERANCES ON OVERALL WIDTHS & WIDTHS ACROSS FLATS OF BARS, & REGULAR SECTIONS

UPTO 6.40mm - ± 0.20	UPTO 32.0mm - ± 0.38	UPTO 120.0mm - ± 0.85	1. STRAIGHTNESS=0.7mm/M 2. TWIST=0.7mm/M 3. ANGULARITY= $\pm 1^\circ$ 4. FLATNESS =0.005xWIDTH
UPTO 10.0mm - ± 0.23	UPTO 50.0mm - ± 0.46	UPTO 160.0mm - ± 1.02	
UPTO 12.0mm - ± 0.25	UPTO 60.0mm - ± 0.53	UPTO 200.0mm - ± 1.14	
UPTO 16.0mm - ± 0.28	UPTO 80.0mm - ± 0.69	UPTO 250.0mm - ± 1.40	
UPTO 25.0mm - ± 0.30	UPTO 100.0mm - ± 0.75	UPTO 300.0mm - ± 1.65	



SYMBOL OF QUALITY
AN ISO 9001 COMPANY

JINDAL ALUMINIUM LTD.
BANGALORE-560073 (INDIA)

	NAME	DATE
DRAWN	PARVESH	30-11-2013
CHECKED		
APPROVED	S.S.GARG	12-12-2013
SCALE		1:1
AREA mm ²		2142.863
PERIMETER mm.		345.766
WEIGHT kg/m		5.786
DRAWING No.	SECTION No.	

- ALL DIMENSIONS ARE IN mm.
- ROUND OFF ALL SHARP CORNERS WITH 0.40 mm.
- TOLERANCES WILL BE AS PER IS:3965-1981, UNLESS OTHERWISE SPECIFIED

PARTY'S NAME	AAR AAR ENTERPRISES, NEW DELHI	P-13212	-
PARTY'S DRAWING No.	SECTION No.-13	S3944	S3944
ALLOY & TEMPER	6063 T6	35883	35883
DESCRIPTION	CURTAIN WALL SECTION		