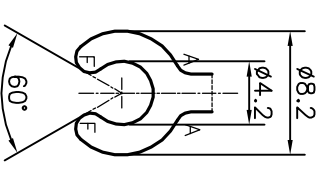
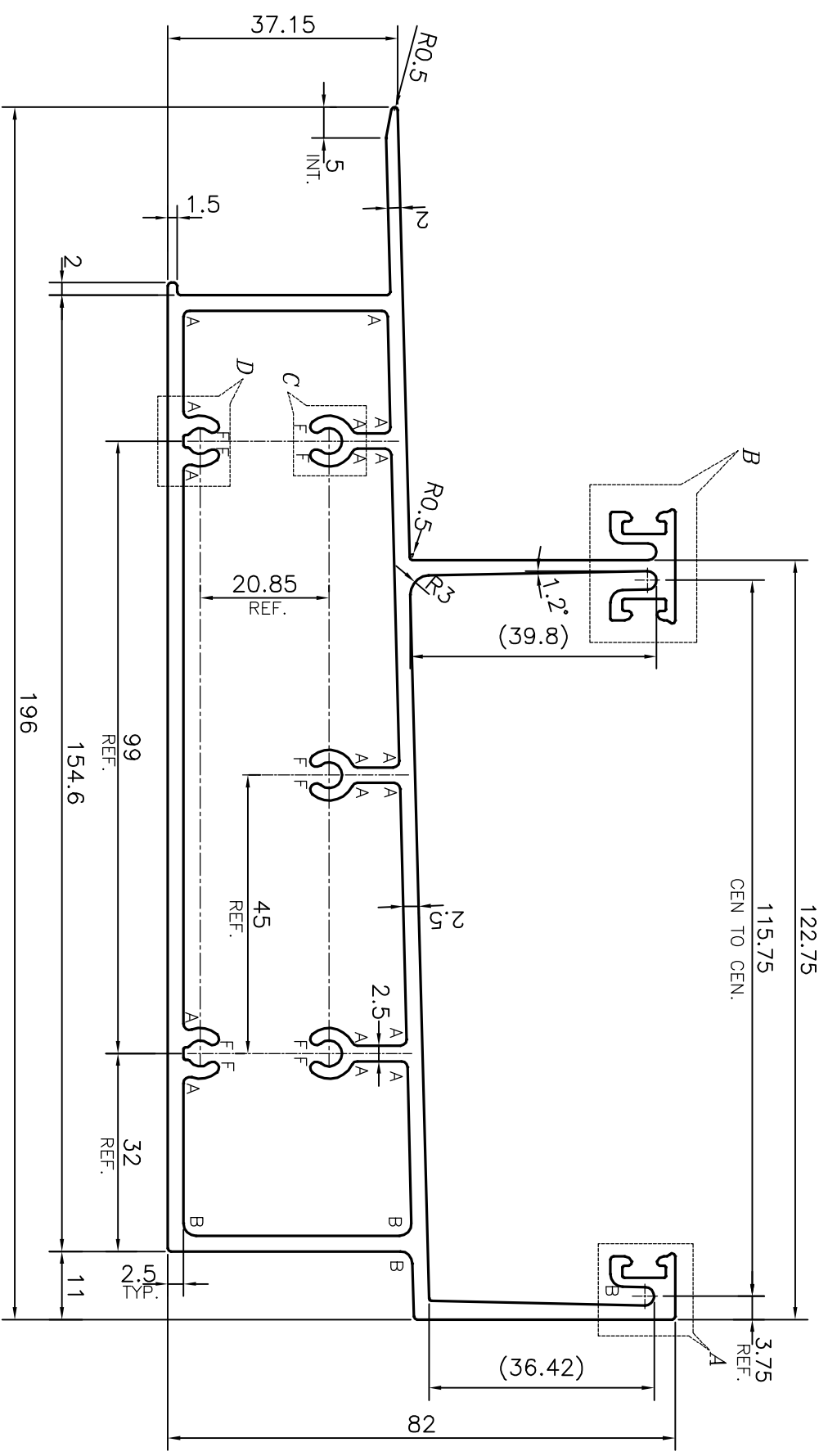
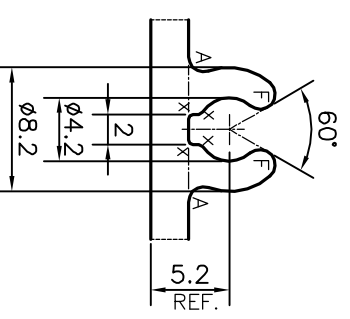


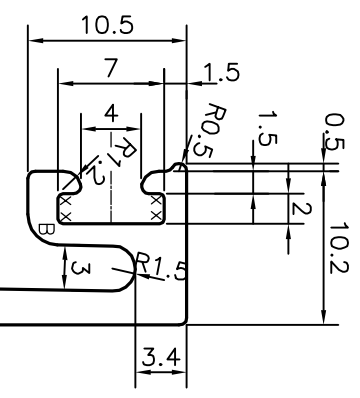
P-13219-1
S4081
35893



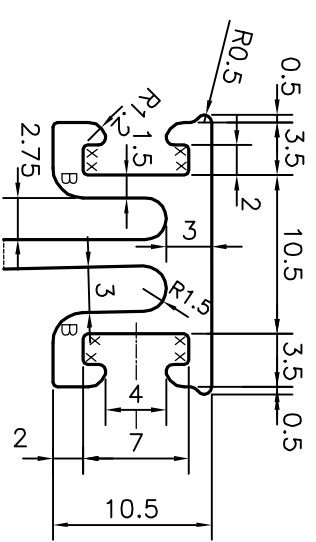
DETAIL OF "C"
SCALE 2:1



DETAIL OF "D"
SCALE 2:1

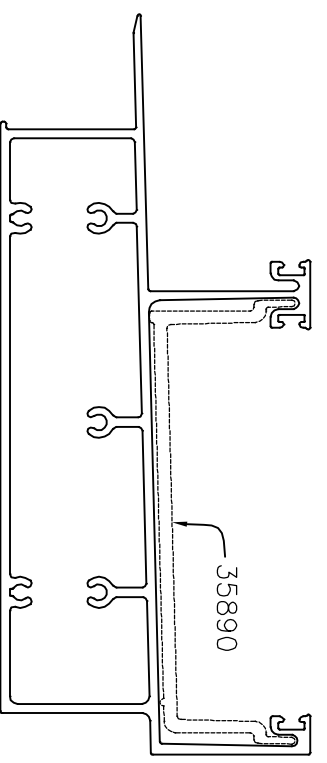


DETAIL OF "A"
SCALE 2:1



DETAIL OF "B"
SCALE 2:1

A = RADIUS 1 mm. (18 PLACES)
B = RADIUS 2 mm. (6 PLACES)
X = RADIUS 0.3 mm. (20 PLACES)
F = FULL RADIUS (10 PLACES)



TOLERANCES ON OVERALL WIDTHS & WIDTHS ACROSS FLATS OF BARS, & REGULAR SECTIONS

UPTO 6.40mm - ±0.20	UPTO 32.0mm - ±0.38	UPTO 120.0mm - ±0.85
UPTO 10.0mm - ±0.23	UPTO 50.0mm - ±0.46	UPTO 160.0mm - ±1.02
UPTO 12.0mm - ±0.25	UPTO 60.0mm - ±0.53	UPTO 200.0mm - ±1.14
UPTO 16.0mm - ±0.28	UPTO 80.0mm - ±0.69	UPTO 250.0mm - ±1.40
UPTO 25.0mm - ±0.30	UPTO 100.0mm - ±0.75	UPTO 300.0mm - ±1.65

<p>JINDAL ALUMINIUM LTD. BANGALORE-560073 (INDIA)</p>		<p>1. STRAIGHTNESS=0.7mm/M 2. TWIST=0.7mm/M 3. ANGULARITY= ±1° 4. FLATNESS =0.005xWIDTHH</p>	
<p>SYMBOL OF QUALITY AN ISO 9001 COMPANY</p>		<p>DRAWN NAME DATE CHECKED PARYESH 12-12-2013 APPROVED S.S.GARG 18-04-2014</p>	
<p>1. ALL DIMENSIONS ARE IN mm. 2. ROUND OFF ALL SHARP CORNERS WITH 0.50 mm. 3. TOLERANCES WILL BE AS PER IS:6477-1983, UNLESS OTHERWISE SPECIFIED</p>		<p>SCALE 1:1 AREA mm² 1559.243 PERIMETER mm. 753.756 WEIGHT kg/m 4.21</p>	

PARTY'S NAME	AAR AAR ENTERPRISES, NEW DELHI	DRAWING No.	SECTION No.
PARTY'S DRAWING No.	SECTION No.-005	P-13219-1	-
ALLOY & TEMPER	6063 T6	S4081	S4081
DESCRIPTION	CURTAIN WALL SECTION	35893	35893