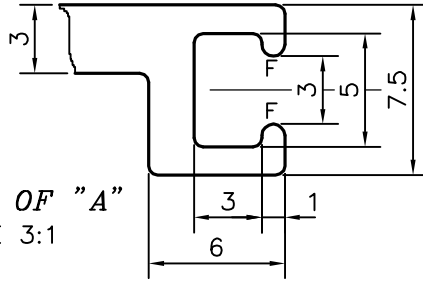


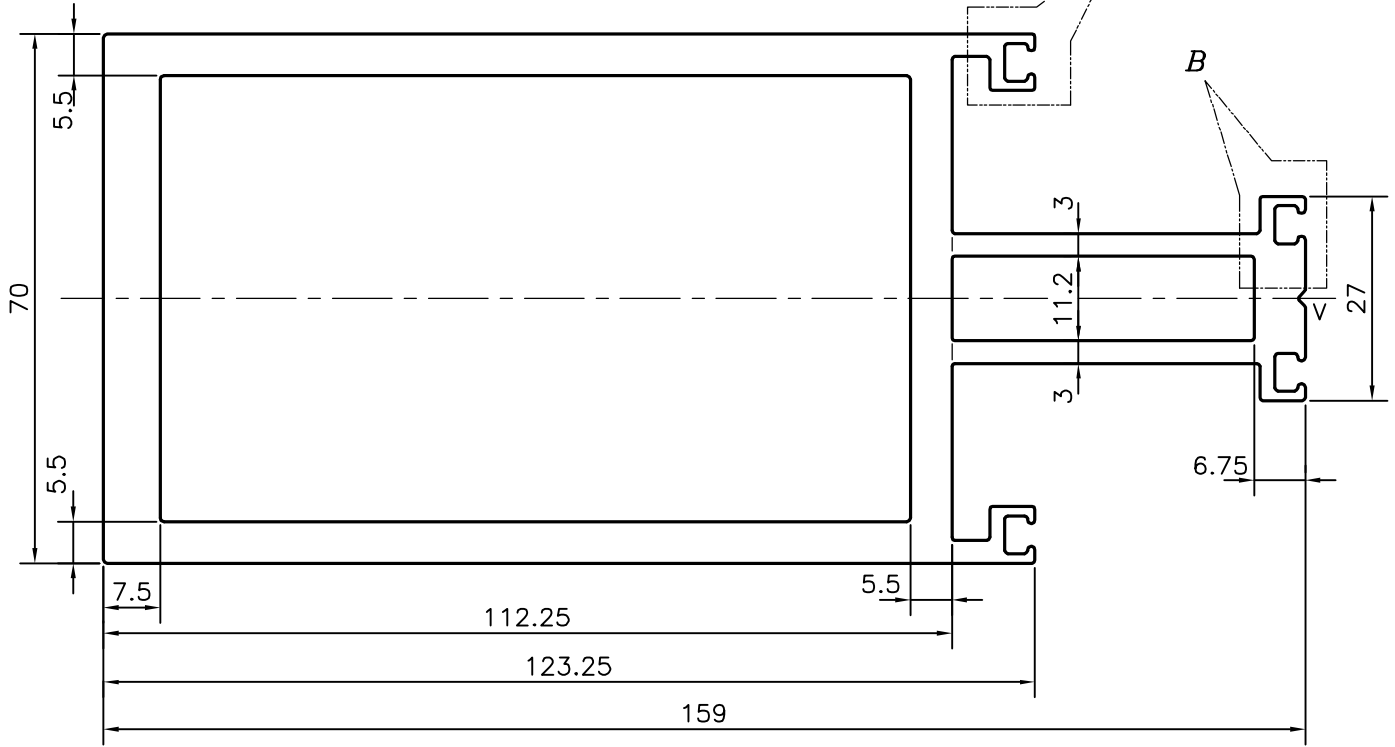
P-12875-2

S3837

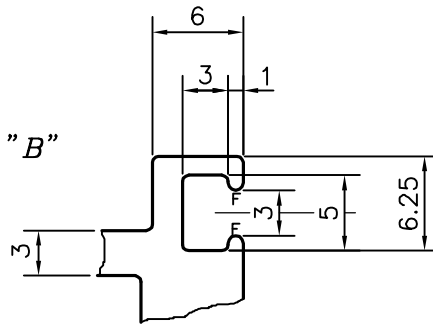
35895



DETAIL OF "A"  
SCALE 3:1




DETAIL OF "B"  
SCALE 2:1



V = V GROOVE 0.9x90°  
F = FULL RADIUS (8 PLACES)

TOLERANCES ON OVERALL WIDTHS & WIDTHS ACROSS FLATS OF BARS, & REGULAR SECTIONS

UPTO 6.40mm - ±0.20	UPTO 32.0mm - ±0.38	UPTO 120.0mm - ±0.85	UPTO 320.00mm - ±1.70
UPTO 10.0mm - ±0.23	UPTO 50.0mm - ±0.46	UPTO 160.0mm - ±1.02	
UPTO 12.0mm - ±0.25	UPTO 60.0mm - ±0.53	UPTO 200.0mm - ±1.14	
UPTO 16.0mm - ±0.28	UPTO 80.0mm - ±0.69	UPTO 250.0mm - ±1.40	
UPTO 25.0mm - ±0.30	UPTO 100.0mm - ±0.75	UPTO 300.0mm - ±1.65	

 SYMBOL OF QUALITY AN ISO 9001 COMPANY	<b>JINDAL ALUMINIUM LTD.</b> BANGALORE-560073 (INDIA)	DRAWN	J.P.KAUSHIK	DATE	09-07-2013
		CHECKED			
1. ALL DIMENSIONS ARE IN mm. 2. ROUND OFF ALL SHARP CORNERS WITH 0.40 mm. 3. TOLERANCES WILL BE AS PER IS:6477-1983 UNLESS OTHERWISE SPECIFIED		APPROVED	S.S.GARG		31-08-2013
		SCALE			1:1
PARTY'S NAME GLAZE TECNO INDIA, MUMBAI		AREA mm <sup>2</sup>			2463.48
		PERIMETER mm.			578.585
PARTY'S DRAWING No. AS PER AutoCAD DRAWING & REQUIREMENT		WEIGHT kg/m			6.651
		DRAWING No.	P-12875-2	SECTION No.	-
ALLOY & TEMPER HE9 WP			S3837		S3837
			35895		35895
DESCRIPTION CURTAIN WALL-MULLION SECTION					