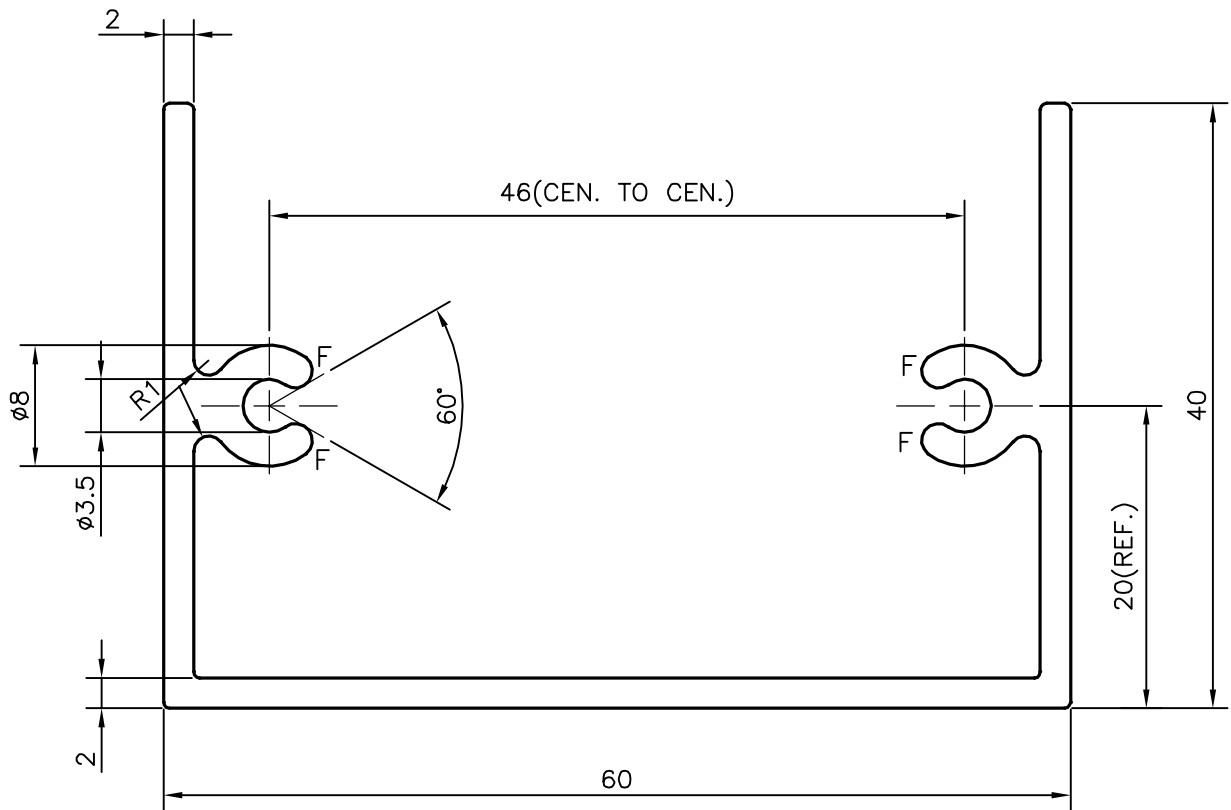
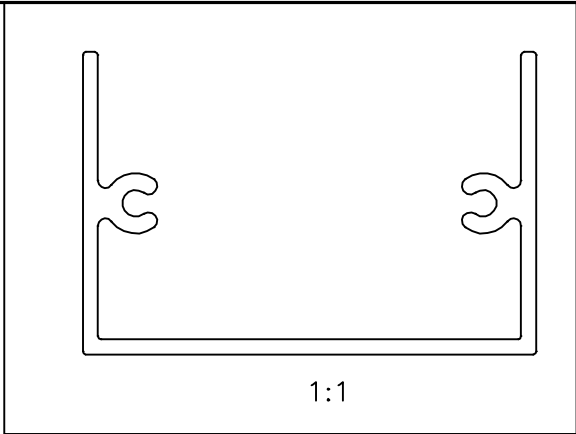



|           |
|-----------|
| P-13336-1 |
| S3994     |
| 35900     |



F = FULL RADIUS ( 4 PLACES )

| TOLERANCES ON OVERALL WIDTHS & WIDTHS ACROSS FLATS OF BARS, & REGULAR SECTIONS |                      |                      |                       |
|--|----------------------|----------------------|-----------------------|
| UPTO 6.40mm - ±0.20  | UPTO 32.0mm - ±0.38  | UPTO 120.0mm - ±0.85 | UPTO 320.00mm - ±1.70 |
| UPTO 10.0mm - ±0.23  | UPTO 50.0mm - ±0.46  | UPTO 160.0mm - ±1.02 |                       |
| UPTO 12.0mm - ±0.25  | UPTO 60.0mm - ±0.53  | UPTO 200.0mm - ±1.14 |                       |
| UPTO 16.0mm - ±0.28  | UPTO 80.0mm - ±0.69  | UPTO 250.0mm - ±1.40 |                       |
| UPTO 25.0mm - ±0.30  | UPTO 100.0mm - ±0.75 | UPTO 300.0mm - ±1.65 |                       |

|  |  |                      |             |             |            |
|--|--|----------------------|-------------|-------------|------------|
| <br>SYMBOL OF QUALITY<br>AN ISO 9001 COMPANY                      | <b>JINDAL ALUMINIUM LTD.</b><br>BANGALORE-560073 (INDIA) | DRAWN                | J.P.KAUSHIK | DATE        | 16-01-2014 |
|  |  | CHECKED              |             |             |            |
| 1. ALL DIMENSIONS ARE IN mm.<br>2. ROUND OFF ALL SHARP CORNERS WITH 0.40 mm.<br>3. TOLERANCES WILL BE AS PER IS:3965-1981 UNLESS OTHERWISE SPECIFIED |  | APPROVED             | S.S.GARG    |             | 22-01-2014 |
|  |  | SCALE                |             |             | 2:1        |
| PARTY'S NAME<br>GLASS & GLAZING TECHNOLOGIES, BANGALORE  |  | AREA mm <sup>2</sup> |             |             | 347.564    |
|  |  | PERIMETER mm.        |             |             | 327.427    |
| PARTY'S DRAWING No.<br>AS PER DRAWING  |  | WEIGHT kg/m          |             |             | 0.938      |
|  |  | DRAWING No.          | P-13336-1   | SECTION No. | -          |
| ALLOY & TEMPER<br>HE9 WP   |  |                      | S3994       |             | S3994      |
|  |  |                      | 35900       |             | 35900      |
| DESCRIPTION<br>MISC. SECTION   |  |                      |             |             |            |
|  |  |                      |             |             |            |