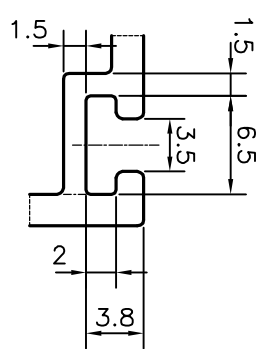
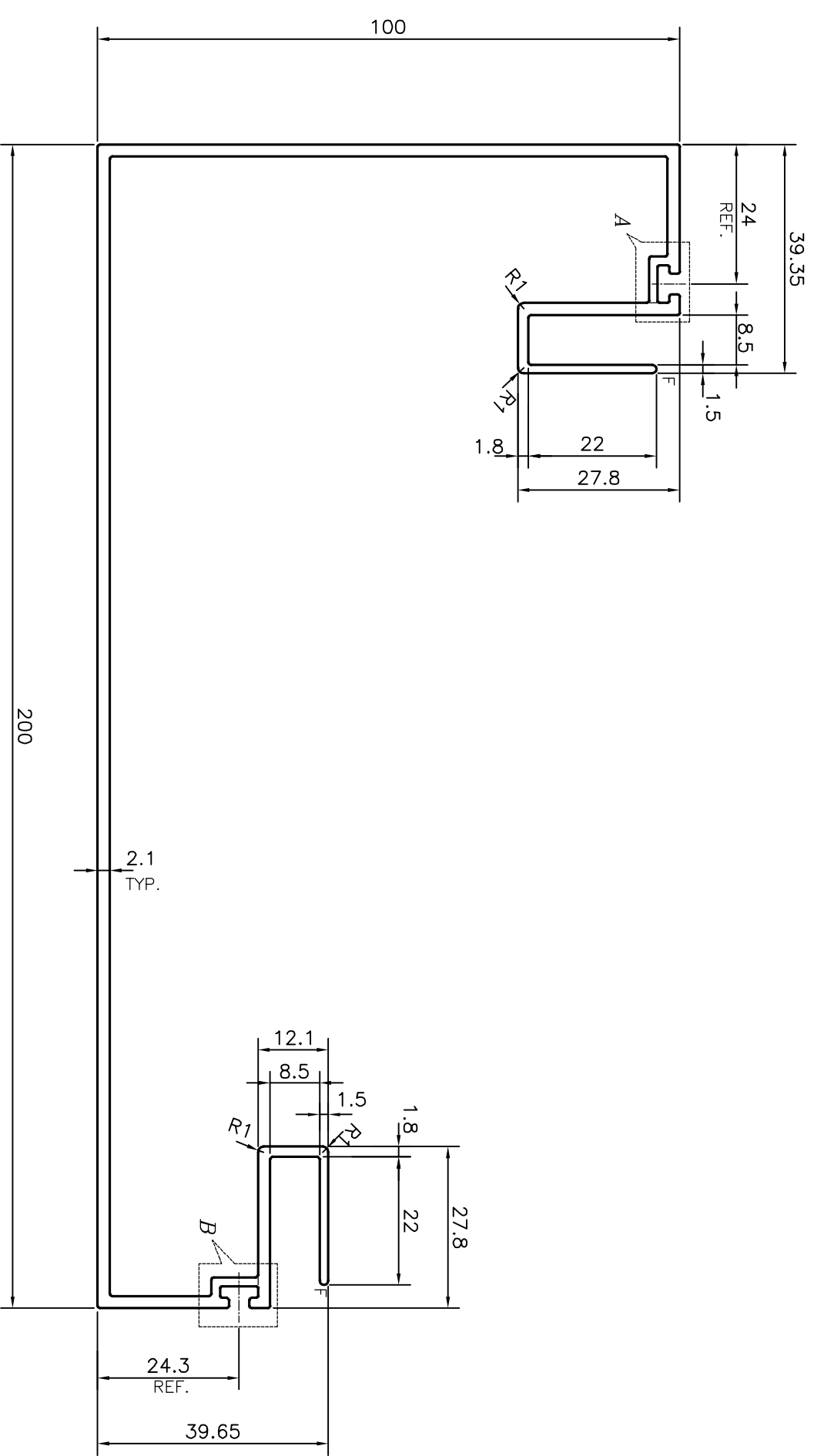


P-13650-1

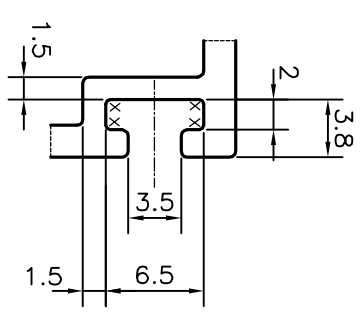
S4168

35933

100% MANUAL CORRECTION REQUIRED.



DETAIL OF "A"
SCALE 2:1



DETAIL OF "B"
SCALE 2:1

X = RADIUS 0.3 mm (8 PLACES)
F = FULL RADIUS (2 PLACES)

TOLERANCES ON OVERALL WIDTHS & WIDTHS ACROSS FLATS OF BARS, & REGULAR SECTIONS

| | | |
|---------------------|----------------------|----------------------|
| UPTO 6.40mm - ±0.20 | UPTO 32.0mm - ±0.38 | UPTO 120.0mm - ±0.85 |
| UPTO 10.0mm - ±0.23 | UPTO 50.0mm - ±0.46 | UPTO 160.0mm - ±1.02 |
| UPTO 12.0mm - ±0.25 | UPTO 60.0mm - ±0.53 | UPTO 200.0mm - ±1.14 |
| UPTO 16.0mm - ±0.28 | UPTO 80.0mm - ±0.69 | UPTO 250.0mm - ±1.40 |
| UPTO 25.0mm - ±0.30 | UPTO 100.0mm - ±0.75 | UPTO 300.0mm - ±1.65 |

| | | |
|--|--|--|
| <p>SYMBOL OF QUALITY AN ISO 9001 COMPANY</p> | <p>JINDAL ALUMINIUM LTD. BANGALORE-560073 (INDIA)</p> | |
| | <p>1. ALL DIMENSIONS ARE IN mm. 2. ROUND OFF ALL SHARP CORNERS WITH 0.40 mm. 3. TOLERANCES WILL BE AS PER IS:3965-1981, UNLESS OTHERWISE SPECIFIED</p> | |
| PARTY'S NAME | ALUMAYER INDIA PVT. LTD., MUMBAI | |
| PARTY'S DRAWING No. | AS PER AUTOCAD DRAWING-CR-41 R1 | |
| ALLOY & TEMPER | 6063 T6 | |
| DESCRIPTION | CURTAIN WALL SECTION | |

| | | |
|-------------|-----------------|------------|
| DRAWN | NAME | DATE |
| CHECKED | PARVESH | 24-06-2014 |
| APPROVED | S.S.GARG | 16-07-2014 |
| SCALE | 1:1 | |
| AREA | mm ² | 961.886 |
| PERIMETER | mm. | 959.102 |
| WEIGHT | kg/m | 2.597 |
| DRAWING No. | SECTION No. | |
| P-13650-1 | - | |
| S4168 | S4168 | |
| 35933 | 35933 | |