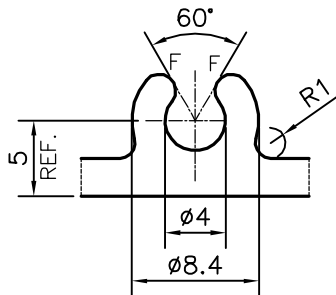
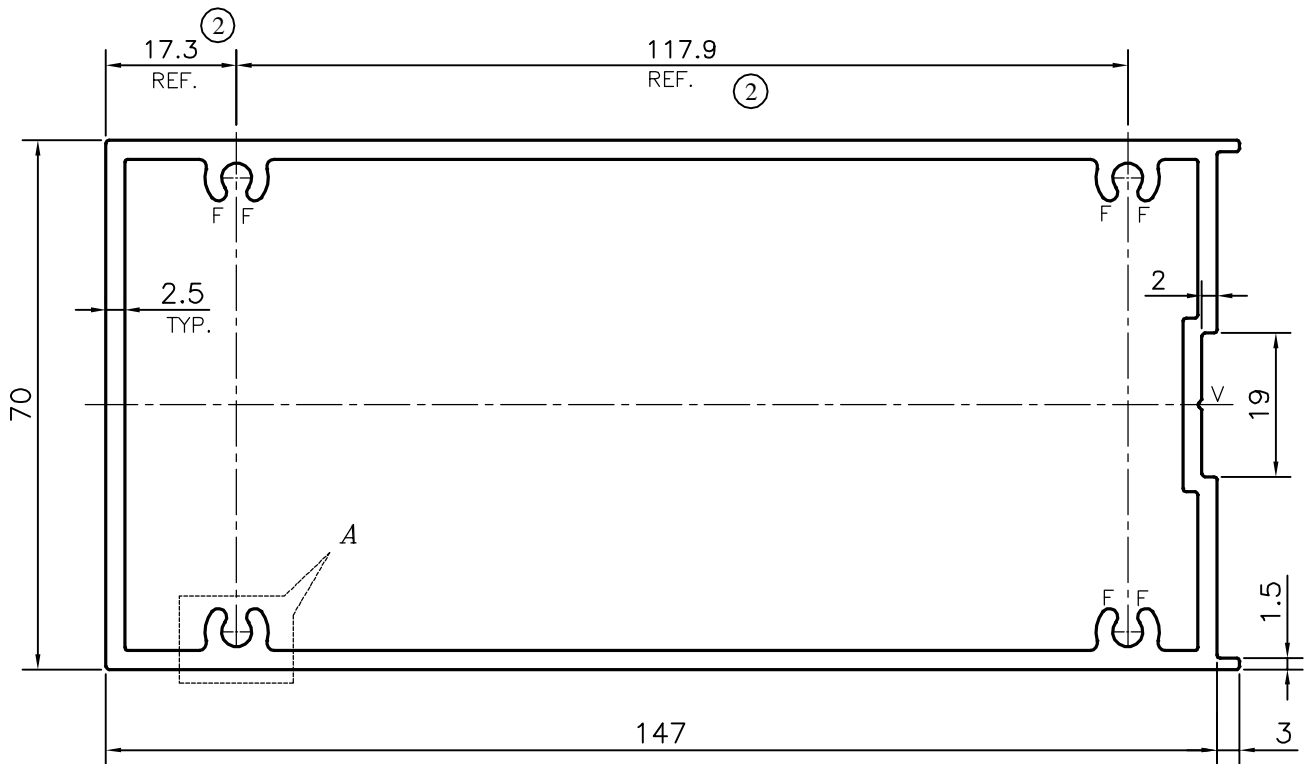


P-16019
S5018
35943



DETAIL OF "A"  
SCALE 2:1

ISSUE-2


SCREW BULB POSITION CHANGED

F = FULL RADIUS (8 PLACES)

V = VEE GROOVE 0.5x90 (1 PLACE)

TOLERANCES ON OVERALL WIDTHS & WIDTHS ACROSS FLATS OF BARS, & REGULAR SECTIONS

UPTO 6.40mm - ±0.20	UPTO 32.0mm - ±0.38	UPTO 120.0mm - ±0.85	1. STRAIGHTNESS=1.7mm/M 2. TWIST=1.7mm/M 3. ANGULARITY= ±2° 4. FLATNESS =0.007xWIDTH
UPTO 10.0mm - ±0.23	UPTO 50.0mm - ±0.46	UPTO 160.0mm - ±1.02	
UPTO 12.0mm - ±0.25	UPTO 60.0mm - ±0.53	UPTO 200.0mm - ±1.14	
UPTO 16.0mm - ±0.28	UPTO 80.0mm - ±0.69	UPTO 250.0mm - ±1.40	
UPTO 25.0mm - ±0.30	UPTO 100.0mm - ±0.75	UPTO 300.0mm - ±1.65	

 SYMBOL OF QUALITY AN ISO 9001 COMPANY	<b>JINDAL ALUMINIUM LTD.</b> BANGALORE-560073 (INDIA)	NAME	DATE
		DRAWN	PARVESH
		CHECKED	
		APPROVED	S.S. GARG
			20-07-2016
		SCALE	1:1
		AREA mm <sup>2</sup>	1186.907
		PERIMETER mm.	448.320
		WEIGHT kg/m	3.205
PARTY'S NAME	AHLUWALIA CONTRACTS (INDIA) LTD., MUMBAI	DRAWING No.	SECTION No.
PARTY'S DRAWING No.	AS PER AUTOCAD DRAWING	P-16019	-
ALLOY & TEMPER	6063 T6	S5018	S5018-ISSUE-2
DESCRIPTION	CURTAIN WALL SECTION	35943	35943