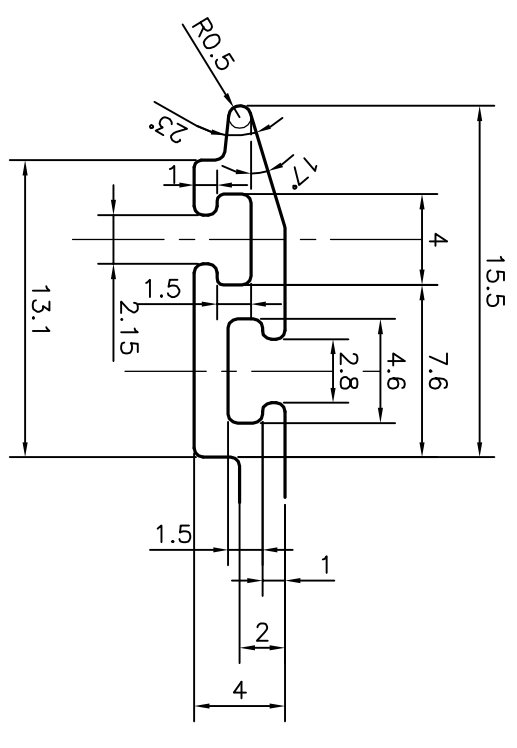
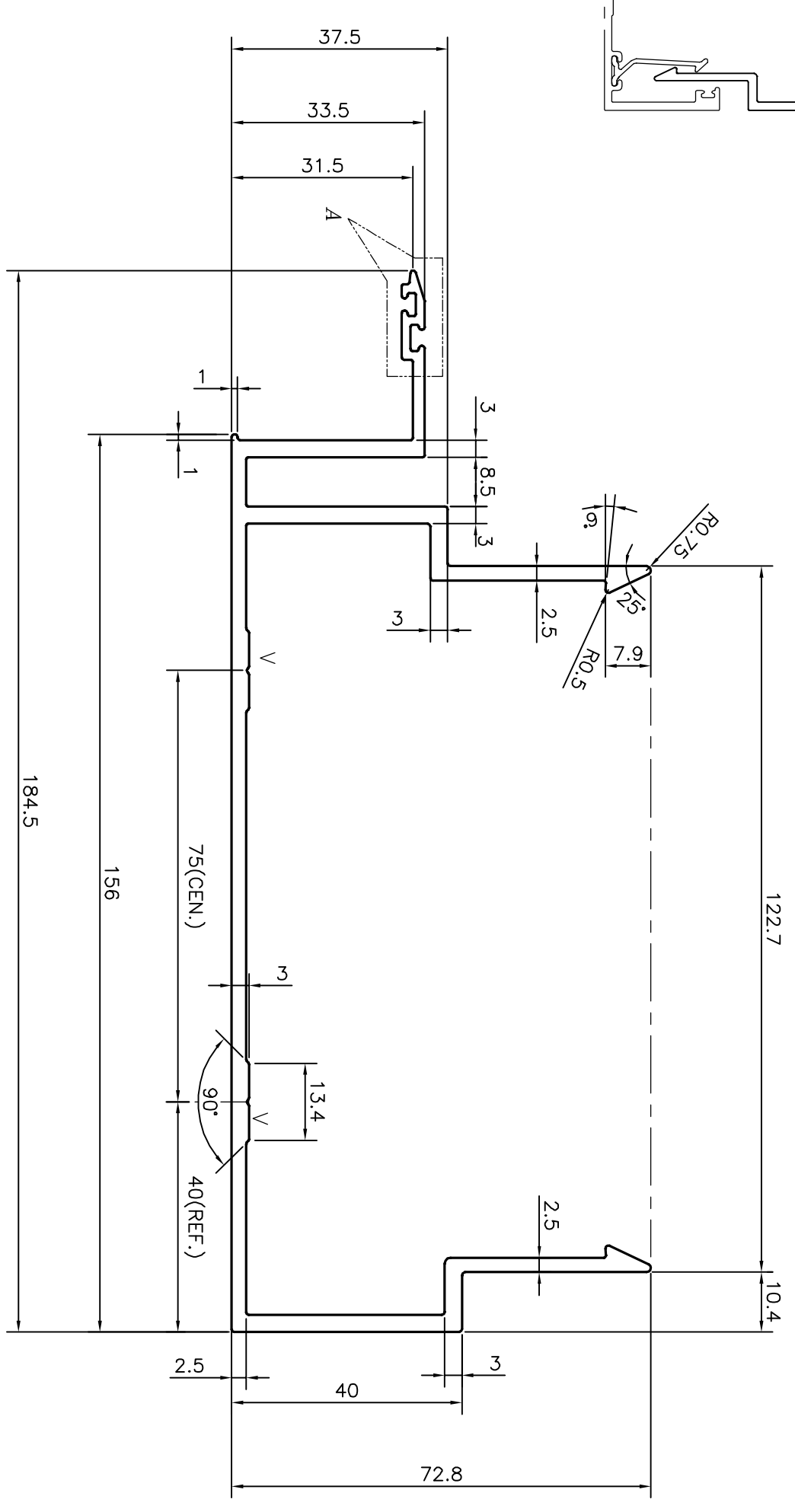
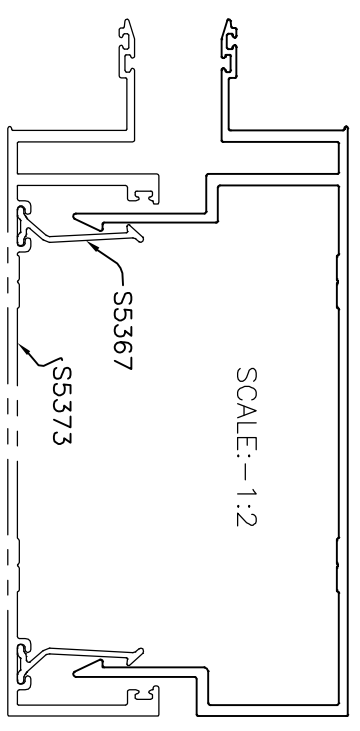


P-16907-1
S5369
36012



DETAIL OF "A"
SCALE 3:1

TOLERANCES ON OVERALL WIDTHS & WIDTHS ACROSS FLATS OF BARS, & REGULAR SECTIONS	
UPTO 6.40mm - ±0.20	UPTO 32.0mm - ±0.38
UPTO 10.0mm - ±0.23	UPTO 50.0mm - ±0.46
UPTO 12.0mm - ±0.25	UPTO 60.0mm - ±0.53
UPTO 16.0mm - ±0.28	UPTO 80.0mm - ±0.69
UPTO 25.0mm - ±0.30	UPTO 100.0mm - ±0.75
	UPTO 120.0mm - ±0.85
	UPTO 160.0mm - ±1.02
	UPTO 200.0mm - ±1.14
	UPTO 250.0mm - ±1.40
	UPTO 300.0mm - ±1.65
	UPTO 320.00mm - ±1.70

<p>JINDAL SYMBOL OF QUALITY AN ISO 9001 COMPANY</p>		<p>JINDAL ALUMINIUM LTD. BANGALORE-560073 (INDIA)</p>	
<p>1. ALL DIMENSIONS ARE IN mm. 2. ROUND OFF ALL SHARP CORNERS WITH 0.40 mm. 3. TOLERANCES WILL BE AS PER IS:3965-1981, UNLESS OTHERWISE SPECIFIED</p>			
PARTY'S NAME	GLOBAL SYNDICATE, BANGALORE	SCALE	1:1
PARTY'S DRAWING No.	AS PER DRAWING-SOB/LULU/SE100	AREA mm ²	1014.348
ALLOY & TEMPER	6063 T6	PERIMETER mm.	774.592
DESCRIPTION	CURTAIN WALL SECTION	WEIGHT kg/m	2.739
		DRAWING No.	P-16907-1
		SECTION No.	-
			S5369
			36012

NAME	J.P. KAUSHIK	DATE	04-04-2017
DRAWN			
CHECKED			
APPROVED	B.NATARAJ		20-04-2017