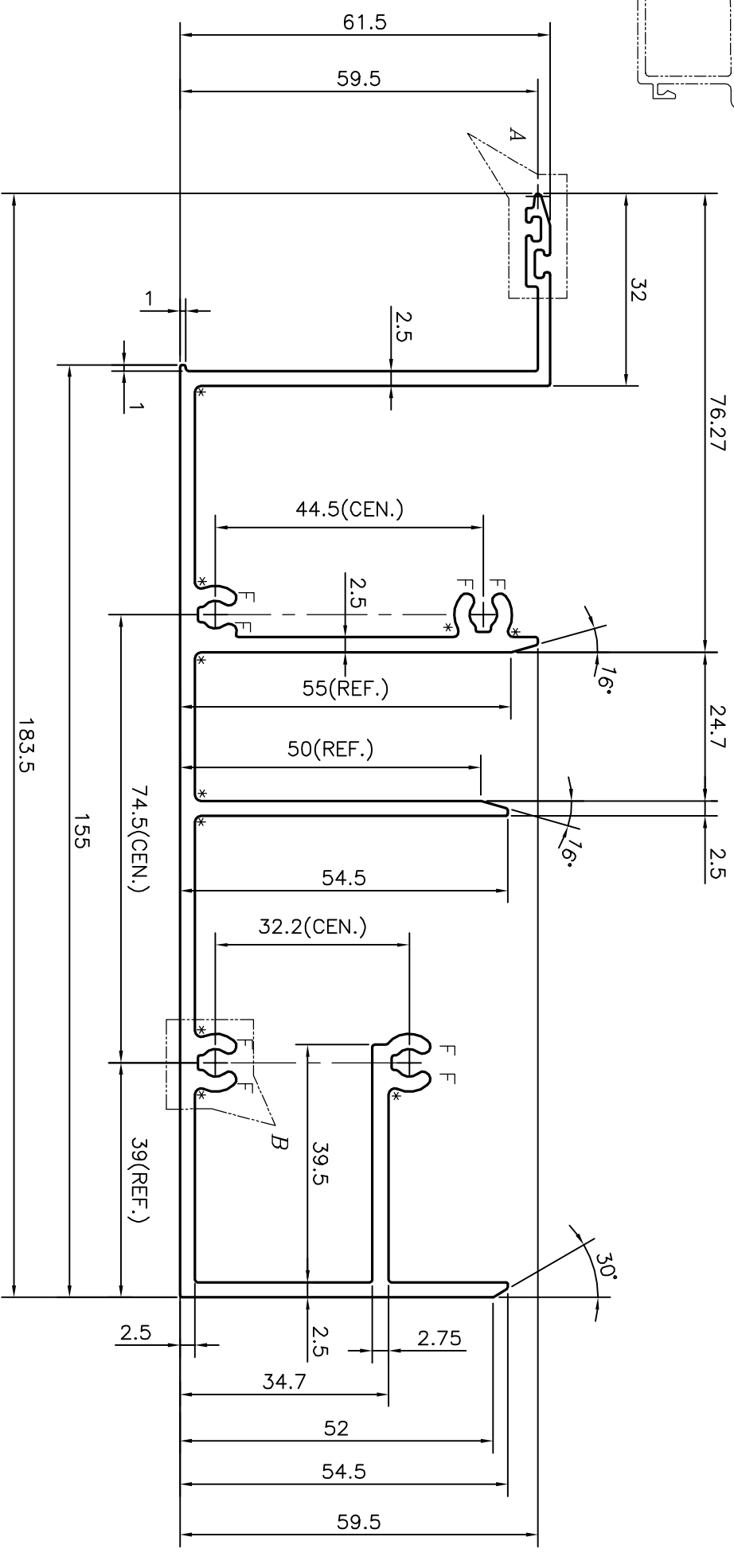
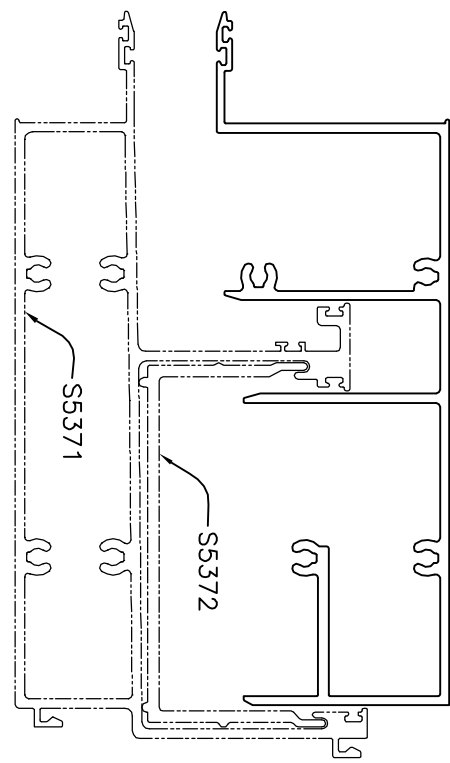
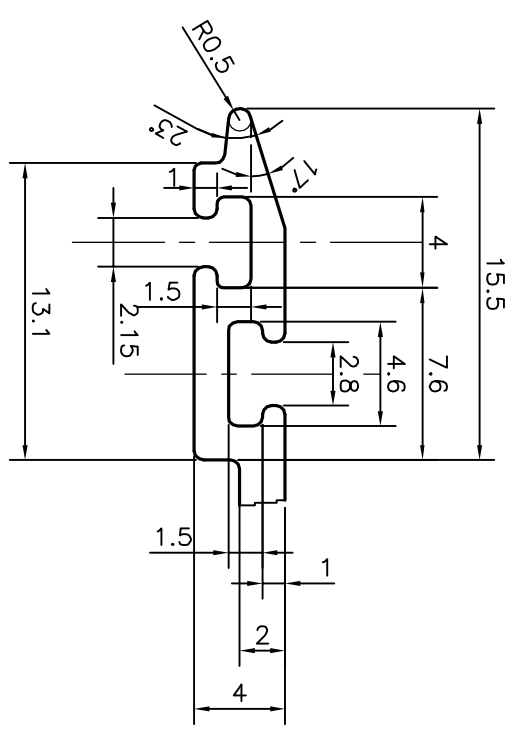


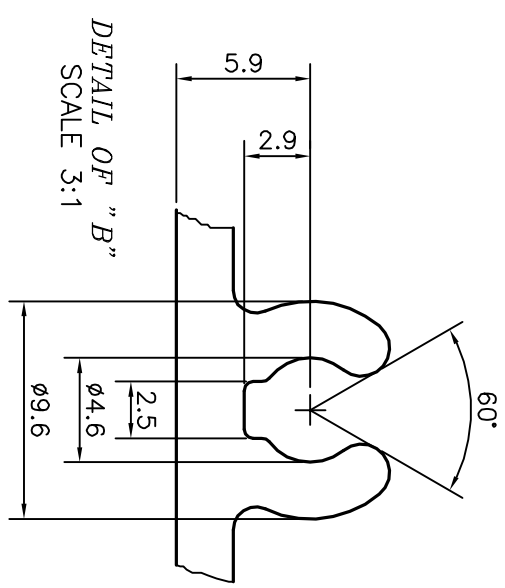
P-16908-1
S5370
36013



* = RADIUS 1 mm. (10 PLACES)
 F = FULL RADIUS (8 PLACES)



DETAIL OF "A"
 SCALE 3:1



DETAIL OF "B"
 SCALE 3:1

TOLERANCES ON OVERALL WIDTHS & WIDTHS ACROSS FLATS OF BARS, & REGULAR SECTIONS		
UPTO 6.40mm - ±0.20	UPTO 32.0mm - ±0.38	UPTO 120.0mm - ±0.85
UPTO 10.0mm - ±0.23	UPTO 50.0mm - ±0.46	UPTO 160.0mm - ±1.02
UPTO 12.0mm - ±0.25	UPTO 60.0mm - ±0.53	UPTO 200.0mm - ±1.14
UPTO 16.0mm - ±0.28	UPTO 80.0mm - ±0.69	UPTO 250.0mm - ±1.40
UPTO 25.0mm - ±0.30	UPTO 100.0mm - ±0.75	UPTO 300.0mm - ±1.65
		UPTO 320.00mm - ±1.70

 SYMBOL OF QUALITY AN ISO 9001 COMPANY	JINDAL ALUMINIUM LTD. BANGALORE-560073 (INDIA)	
	DRAWN	J.P. KAUSHIK 04-04-2017
1. ALL DIMENSIONS ARE IN mm. 2. ROUND OFF ALL SHARP CORNERS WITH 0.40 mm. 3. TOLERANCES WILL BE AS PER IS:3965-1981, UNLESS OTHERWISE SPECIFIED		CHECKED
PARTY'S NAME	GLOBAL SYNDICATE, BANGALORE	APPROVED
PARTY'S DRAWING No.	AS PER DRAWING-SOB/LULU/SE104	B.NATARAJ 20-04-2017
ALLOY & TEMPER	6063 T6	SCALE
DESCRIPTION	CURTAIN WALL SECTION	AREA mm ²
		PERIMETER mm.
		WEIGHT kg/m
		DRAWING No.
		SECTION No.

PARTY'S NAME	GLOBAL SYNDICATE, BANGALORE
PARTY'S DRAWING No.	AS PER DRAWING-SOB/LULU/SE104
ALLOY & TEMPER	6063 T6
DESCRIPTION	CURTAIN WALL SECTION