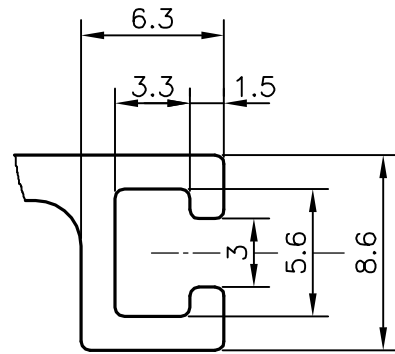


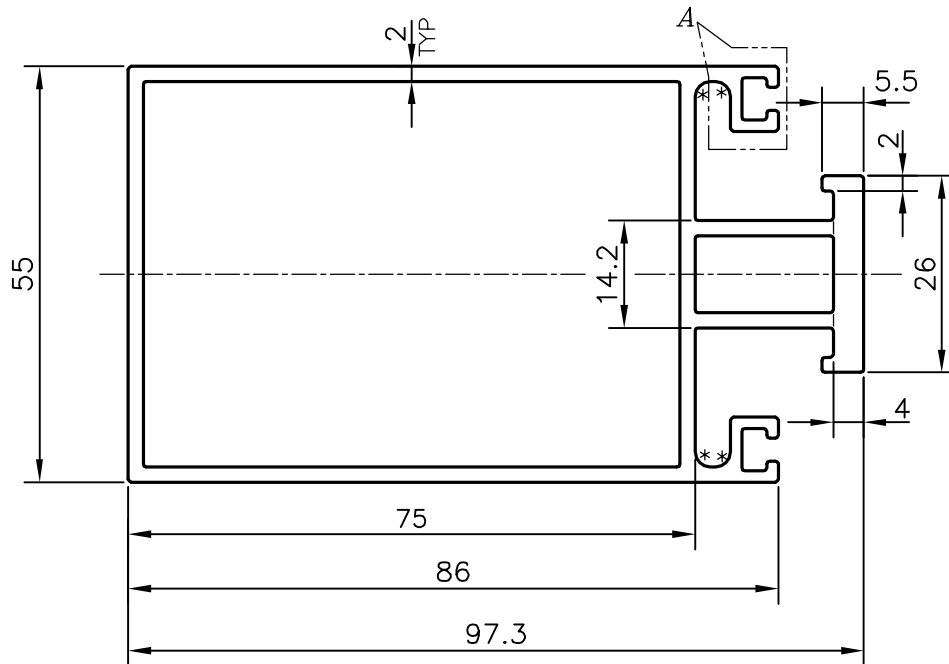
P-18048

S5753

36022



DETAIL OF "A"  
SCALE 3:1



\* = 2.0 RADIUS (4 PLACES)

TOLERANCES ON OVERALL DIMENSIONS OF HOLLOW SECTIONS

UPTO 20.0mm - ±0.30	UPTO 80.0mm - ±0.70	UPTO 180.0mm - ±1.27	1. STRAIGHTNESS=1.7mm/M 2. TWIST=1.7mm/M 3. ANGULARITY= ±2° 4. FLATNESS =0.006xWIDTH
UPTO 30.0mm - ±0.38	UPTO 100.0mm - ±0.80	UPTO 200.0mm - ±1.40	
UPTO 40.0mm - ±0.45	UPTO 120.0mm - ±0.90	UPTO 225.0mm - ±1.52	
UPTO 50.0mm - ±0.52	UPTO 140.0mm - ±1.00		
UPTO 60.0mm - ±0.60	UPTO 160.0mm - ±1.14		



SYMBOL OF QUALITY  
AN ISO 9002 COMPANY

**JINDAL ALUMINIUM LTD.**  
BANGALORE-560073 (INDIA)

	NAME	DATE
DRAWN	J.P.KAUSHIK	26-03-2018
CHECKED		
APPROVED	B.NATARAJA	04-04-2018

SCALE	1:1
AREA mm <sup>2</sup>	771.834
PERIMETER mm.	424.586
WEIGHT kg/m	2.084

- ALL DIMENSIONS ARE IN mm.
- ROUND OFF ALL SHARP CORNERS WITH 0.40 mm.
- TOLERANCES WILL BE AS PER IS:6477-1983, UNLESS OTHERWISE SPECIFIED

PARTY'S NAME	ARIHANT ALU GLASS SYSTEM PVT. LTD., INDORE	DRAWING No.	P-18048	SECTION No.	-
PARTY'S DRAWING No.	AS PER DRAWING		S5753		S5753
ALLOY & TEMPER	6063 T6		36022		36022
DESCRIPTION	CURTAIN WALL SECTION				