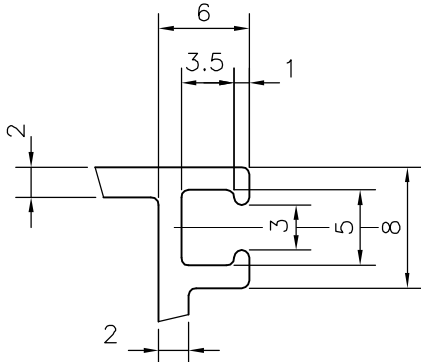


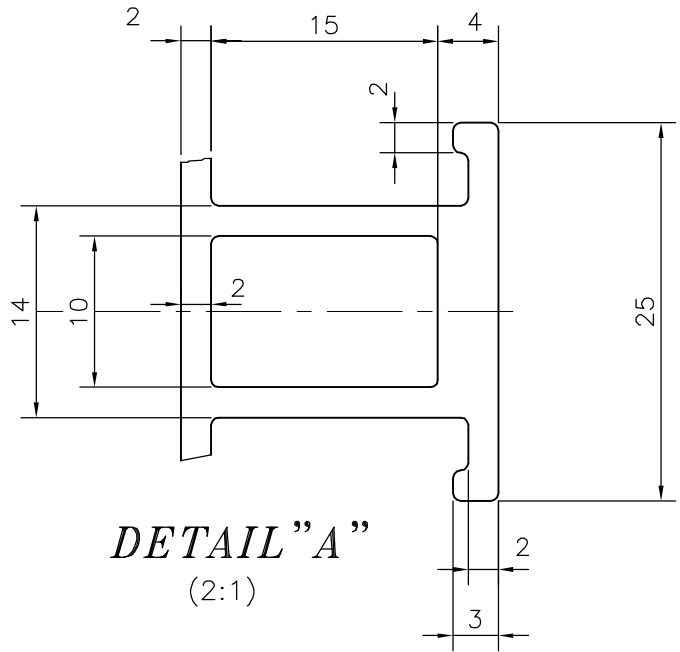
P-18822

36053



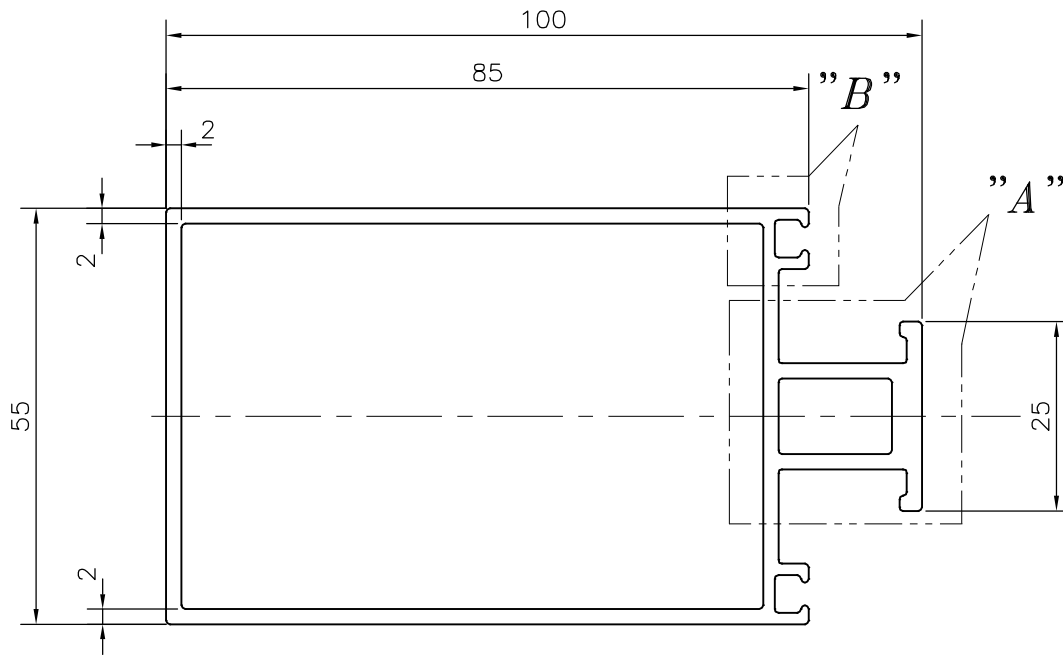
DETAIL "B"

(2:1)



DETAIL "A"

(2:1)



UNSPECIFIED RADII 0.5 mm

TOLERANCES ON OVERALL DIMENSIONS OF HOLLOW SECTIONS

UPTO 20.0mm - ±0.30
 UPTO 30.0mm - ±0.38
 UPTO 40.0mm - ±0.45
 UPTO 50.0mm - ±0.52
 UPTO 60.0mm - ±0.60

UPTO 80.0mm - ±0.70
 UPTO 100.0mm - ±0.80
 UPTO 120.0mm - ±0.90
 UPTO 140.0mm - ±1.00
 UPTO 160.0mm - ±1.14

UPTO 180.0mm - ±1.27
 UPTO 200.0mm - ±1.40
 UPTO 225.0mm - ±1.52

1. STRAIGHTNESS=1.7mm/M
2. TWIST=1.7mm/M
3. ANGULARITY= ±2°
4. FLATNESS =0.006xWIDTH



SYMBOL OF QUALITY
 AN ISO 9001 COMPANY

JINDAL ALUMINIUM LTD.
 BANGALORE-560073 (INDIA)

| | NAME | DATE |
|----------------------|-------------|------------|
| DRAWN | J.P.KAUSHIK | 03-11-2018 |
| CHECKED | | |
| APPROVED | B.NATARAJA | 09-11-2018 |
| SCALE | | 1:1 |
| AREA mm ² | | 693.215 |
| PERIMETER mm. | | 370.274 |
| WEIGHT kg/m | | 1.872 |
| DRAWING No. | SECTION No. | |
| P-18822 | - | |
| 36053 | 36053 | |

1. ALL DIMENSIONS ARE IN mm.
2. ROUND OFF ALL SHARP CORNERS WITH 0.50 mm.
3. TOLERANCES WILL BE AS PER IS:6477-1983 UNLESS OTHERWISE SPECIFIED

| | |
|---------------------|---------------------------------|
| PARTY'S NAME | GENERAL CATEGORY, MUMBAI MARKET |
| PARTY'S DRAWING No. | AS PER DRAWING |
| ALLOY & TEMPER | 6063 T6 |
| DESCRIPTION | CURTAIN WALL SECTION |