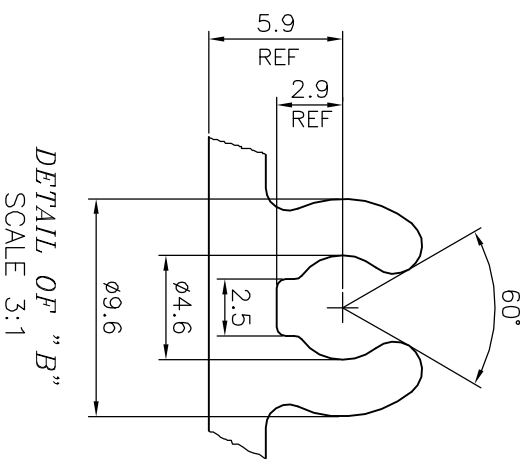
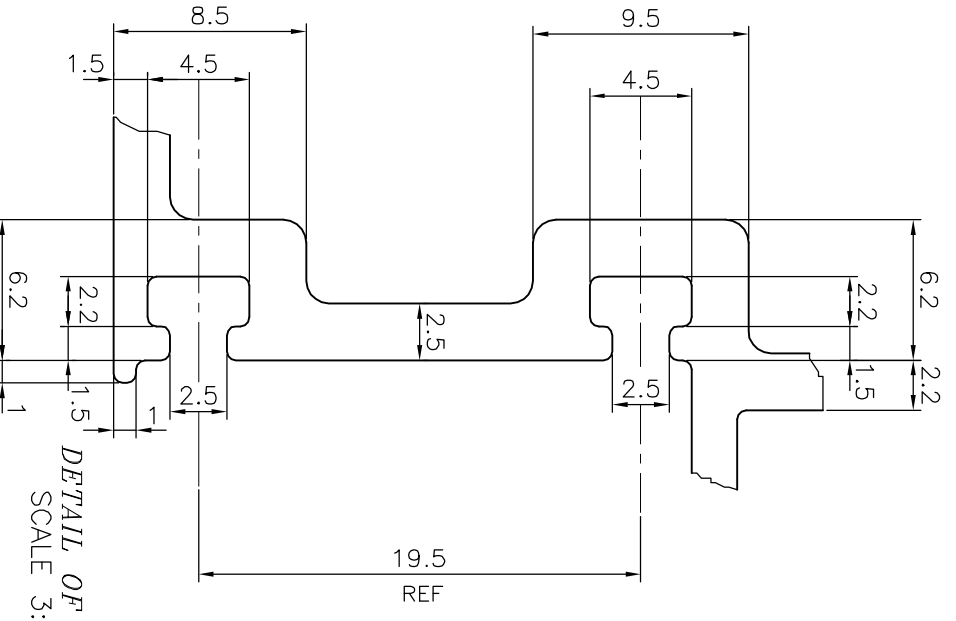
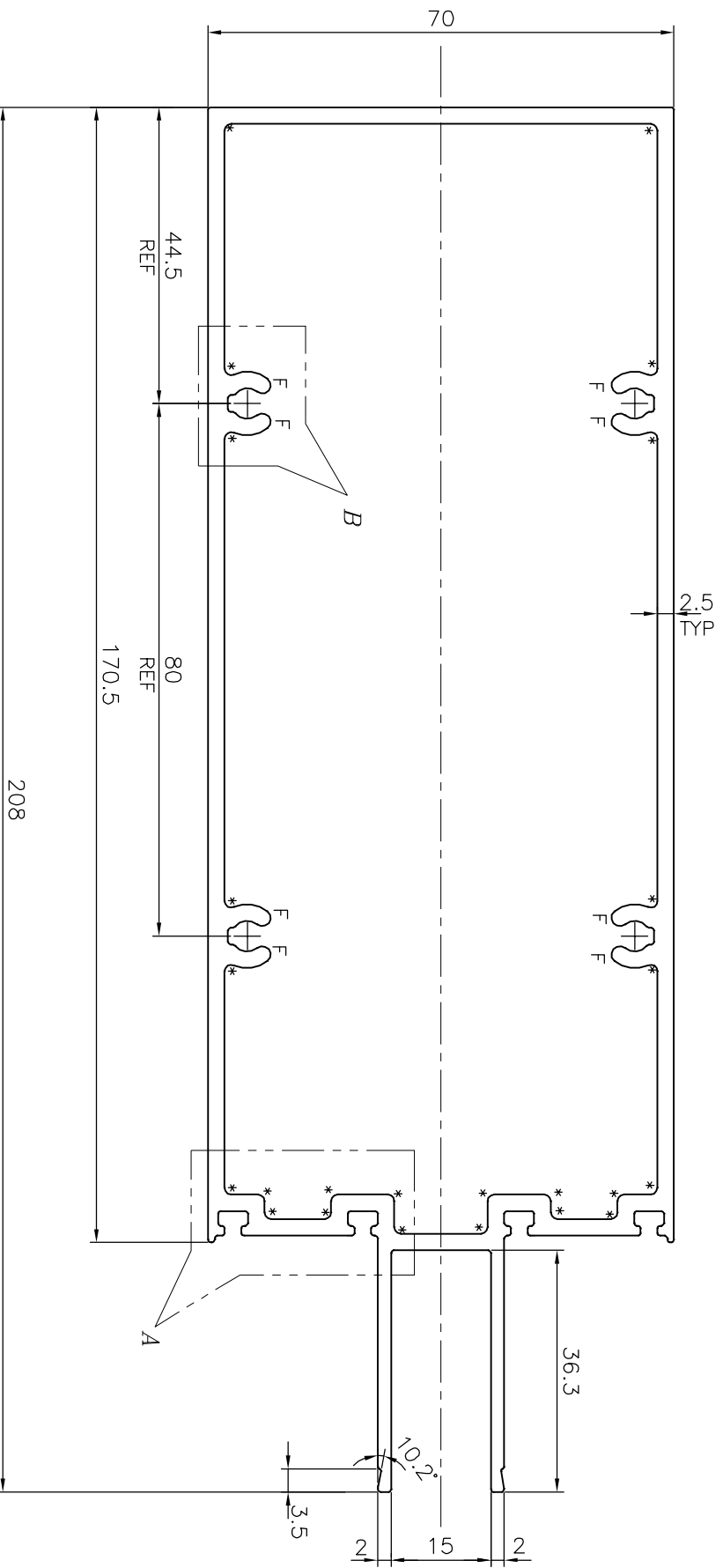
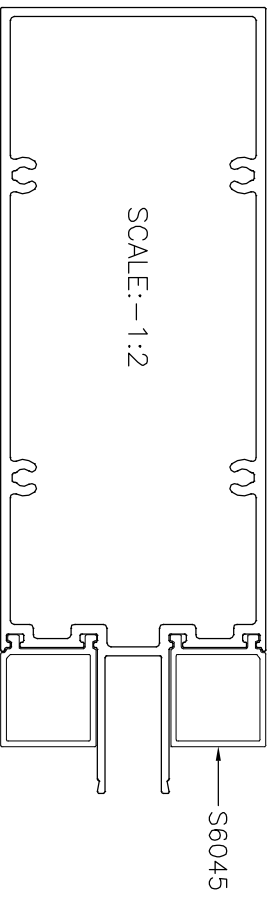


P-18173-1
S6052
36091



F = FULL RADIUS(8 PLACES)
* = 1.0 RADIUS (24 PLACES)

TOLERANCES ON OVERALL DIMENSIONS OF HOLLOW SECTIONS

UPTO 20.0mm - ±0.30	UPTO 80.0mm - ±0.70	UPTO 180.0mm - ±1.27
UPTO 30.0mm - ±0.38	UPTO 100.0mm - ±0.80	UPTO 200.0mm - ±1.40
UPTO 40.0mm - ±0.45	UPTO 120.0mm - ±0.90	UPTO 225.0mm - ±1.52
UPTO 50.0mm - ±0.52	UPTO 140.0mm - ±1.00	
UPTO 60.0mm - ±0.60	UPTO 160.0mm - ±1.14	

1. STRAIGHTNESS=1.7mm/M
2. TWIST=1.7mm/M
3. ANGULARITY= ±2°
4. FLATNESS =0.006xWIDTH

<p>SYMBOL OF QUALITY AN ISO 9001 COMPANY</p>		<p>JINDAL ALUMINIUM LTD. BANGALORE-560073 (INDIA)</p>	
<p>1. ALL DIMENSIONS ARE IN mm. 2. ROUND OFF ALL SHARP CORNERS WITH 0.40 mm. 3. TOLERANCES WILL BE AS PER IS:6477-1983 UNLESS OTHERWISE SPECIFIED</p>			
PARTY'S NAME	GLOBAL SYNDICATE, BANGALORE	DRAWN	J.P.KAUSHIK
PARTY'S DRAWING No.	AS PER DRAWING	CHECKED	
ALLOY & TEMPER	6063 T6	APPROVED	
DESCRIPTION	MID TRANSOM SECTION	SCALE	1:1
		AREA mm ²	1542.341
		PERIMETER mm.	670.538
		WEIGHT kg/m	4.164
		DRAWING No.	P-18173-1
		SECTION No.	-
			S6052
			36091