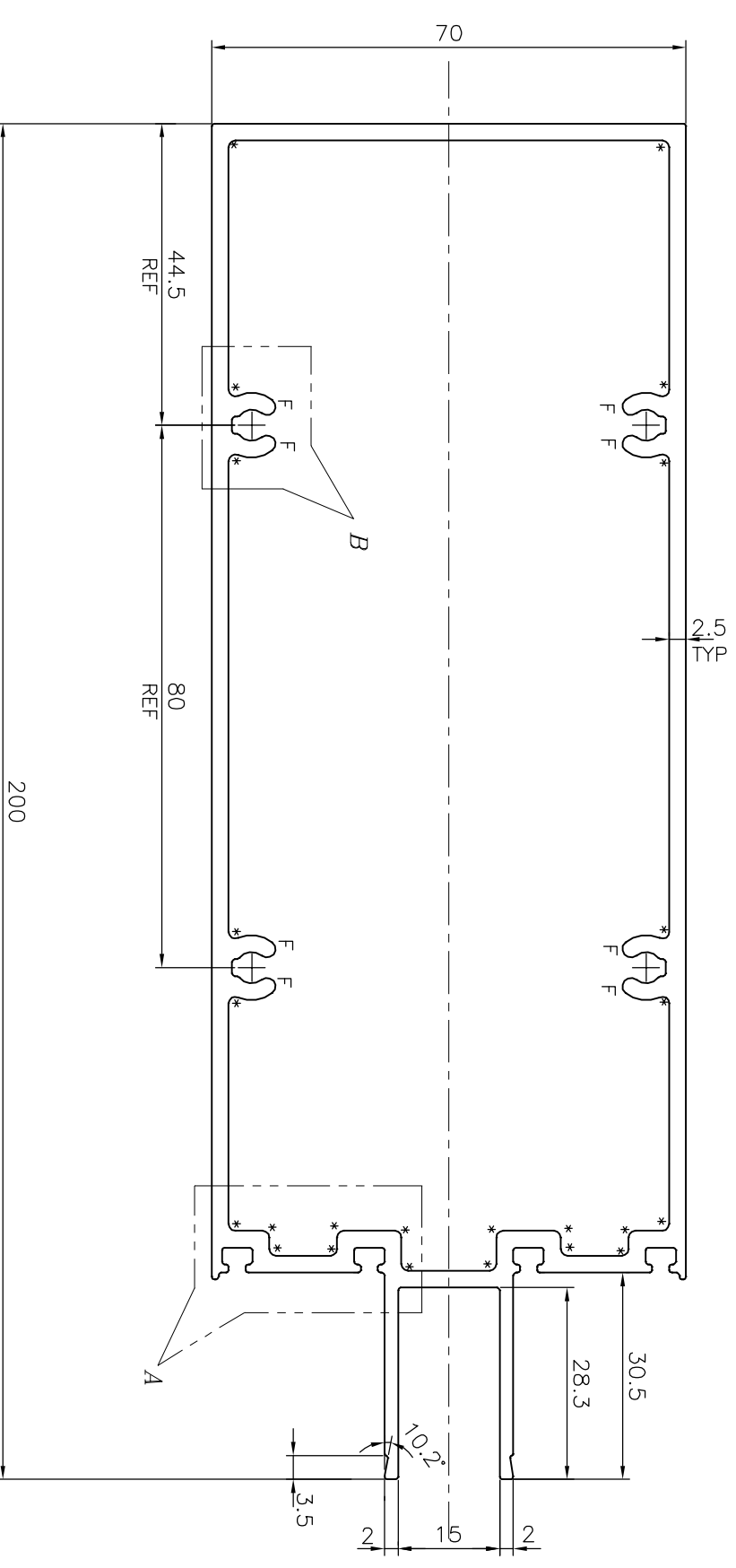
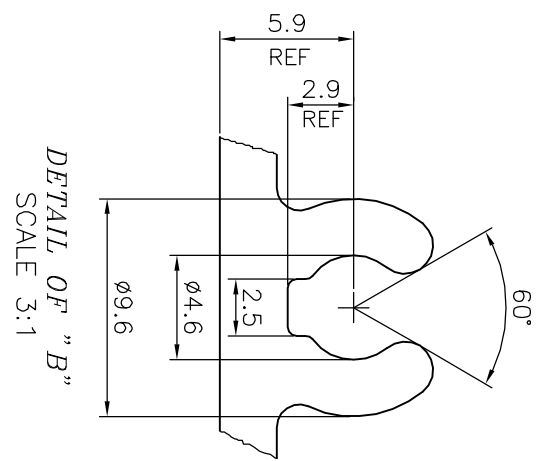
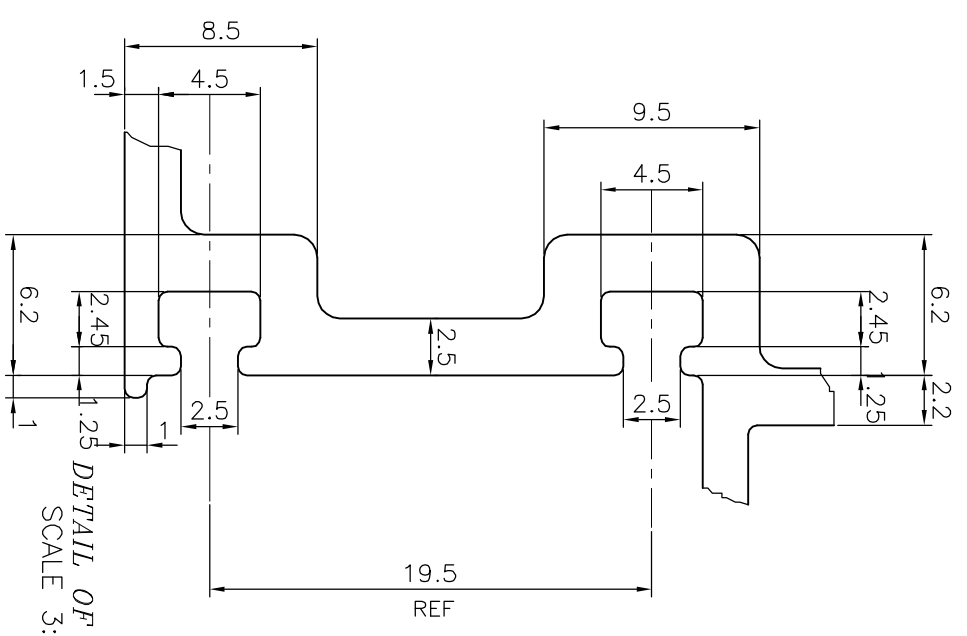



P-19415
S6245
36131



F = FULL RADIUS(8 PLACES)
 * = 1.0 RADIUS (24 PLACES)



TOLERANCES ON OVERALL DIMENSIONS OF HOLLOW SECTIONS		
UPTO 20.0mm - ±0.30	UPTO 80.0mm - ±0.70	UPTO 180.0mm - ±1.27
UPTO 30.0mm - ±0.38	UPTO 100.0mm - ±0.80	UPTO 200.0mm - ±1.40
UPTO 40.0mm - ±0.45	UPTO 120.0mm - ±0.90	UPTO 225.0mm - ±1.52
UPTO 50.0mm - ±0.52	UPTO 140.0mm - ±1.00	
UPTO 60.0mm - ±0.60	UPTO 160.0mm - ±1.14	

 SYMBOL OF QUALITY AN ISO 9001 COMPANY	JINDAL ALUMINIUM LTD. BANGALORE-560073 (INDIA)	DRAWN J.P.KAUSHIK 11-04-2019
		CHECKED
1. ALL DIMENSIONS ARE IN mm. 2. ROUND OFF ALL SHARP CORNERS WITH 0.40 mm. 3. TOLERANCES WILL BE AS PER IS:6477-1983 UNLESS OTHERWISE SPECIFIED		APPROVED B.NATARAJA 07-05-2019
PARTY'S NAME GLOBAL SYNDICATE, BANGALORE	SCALE 1:1	AREA mm ² 1508.341
PARTY'S DRAWING No. AS PER DRAWING	PERIMETER mm. 638.538	WEIGHT kg/m 4.073
ALLOY & TEMPER 6063 T6	DRAWING No. P-19415	SECTION No. -
DESCRIPTION MID TRANSOM SECTION	36131	36131