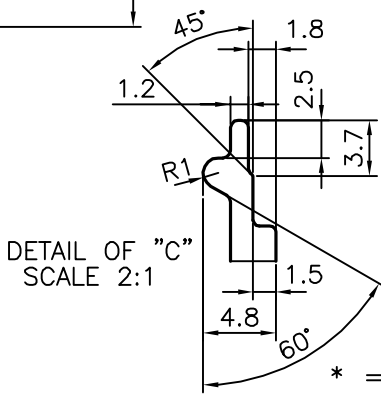
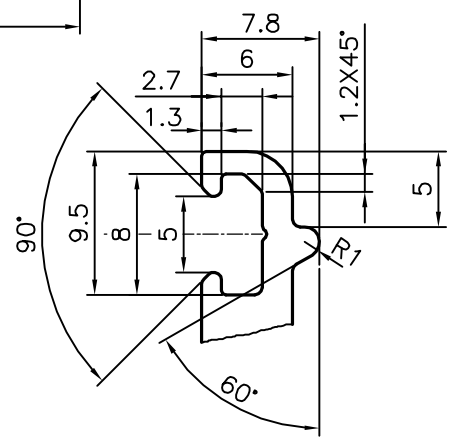
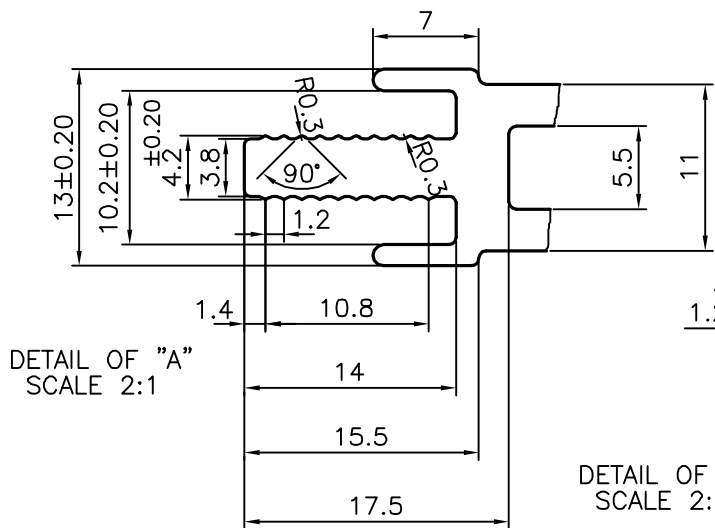
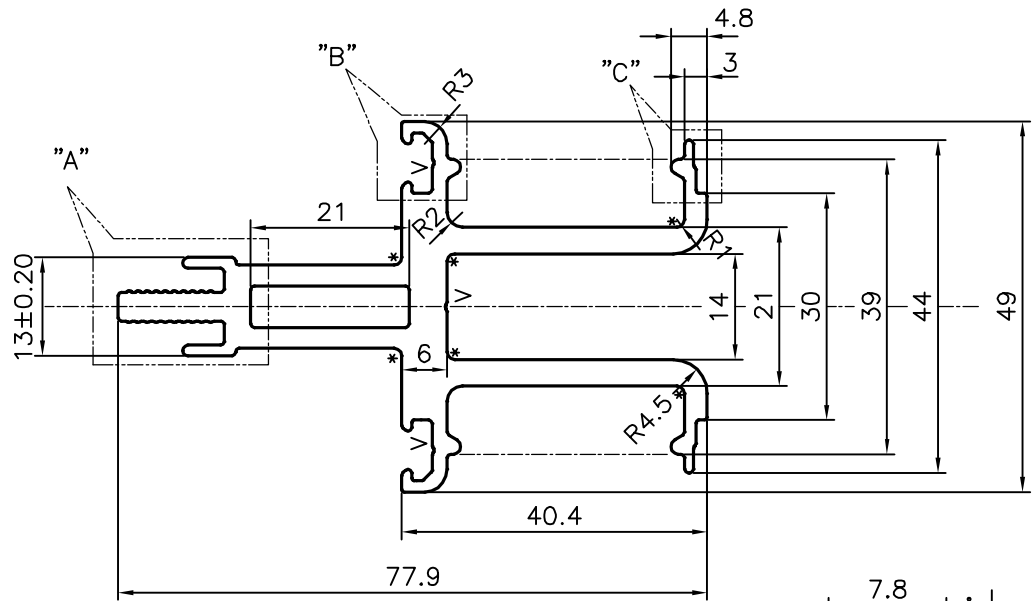


P-17501-2

S5516


36144



* = 1.0 RADIUS (6 PLACES)
 V = V GROOVE 0.3x90° (3 PLACES)

TOLERANCES ON OVERALL WIDTHS & WIDTHS ACROSS FLATS OF BARS, & REGULAR SECTIONS

| | | | |
|---------------------|----------------------|----------------------|-----------------------|
| UPTO 6.40mm - ±0.20 | UPTO 32.0mm - ±0.38 | UPTO 120.0mm - ±0.85 | UPTO 320.00mm - ±1.70 |
| UPTO 10.0mm - ±0.23 | UPTO 50.0mm - ±0.46 | UPTO 160.0mm - ±1.02 | |
| UPTO 12.0mm - ±0.25 | UPTO 60.0mm - ±0.53 | UPTO 200.0mm - ±1.14 | |
| UPTO 16.0mm - ±0.28 | UPTO 80.0mm - ±0.69 | UPTO 250.0mm - ±1.40 | |
| UPTO 25.0mm - ±0.30 | UPTO 100.0mm - ±0.75 | UPTO 300.0mm - ±1.65 | |

| | | | | |
|--|--|-------------|-----------------|------------|
|  SYMBOL OF QUALITY AN ISO 9001 COMPANY | JINDAL ALUMINIUM LTD. BANGALORE-560073 (INDIA) | DRAWN | NAME | DATE |
| | | CHECKED | J.P.KAUSHIK | 07-10-2017 |
| 1. ALL DIMENSIONS ARE IN mm. 2. ROUND OFF ALL SHARP CORNERS WITH 0.50 mm. 3. TOLERANCES WILL BE AS PER IS:6477-1983 , UNLESS OTHERWISE SPECIFIED | | APPROVED | B.NATARAJA | 11-10-2017 |
| | | SCALE | | 1:1 |
| PARTY'S NAME GSC GLASS LTD., GREATER NOIDA | | AREA | mm ² | 745.431 |
| | | PERIMETER | mm. | 412.631 |
| PARTY'S DRAWING No. M33429 | | WEIGHT | kg/m | 2.013 |
| | | DRAWING No. | SECTION No. | |
| ALLOY & TEMPER 6063 T6 | | P-17501-2 | - | |
| | | S5516 | S5516 | |
| DESCRIPTION MISC. SECTION | | 36144 | 36144 | |
| | | | | |