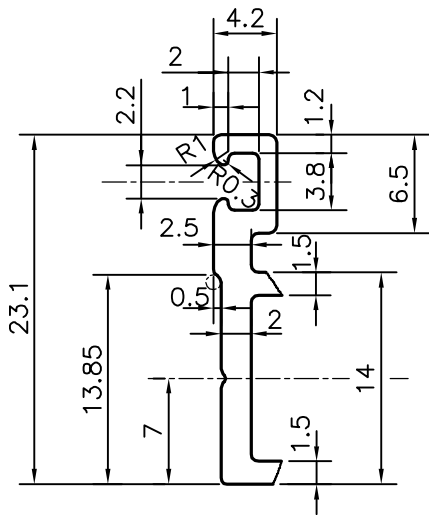
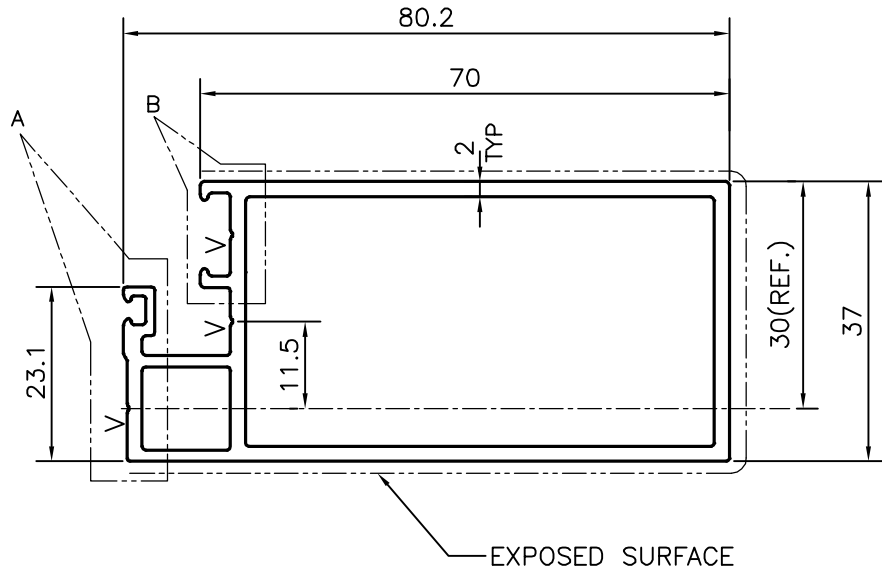


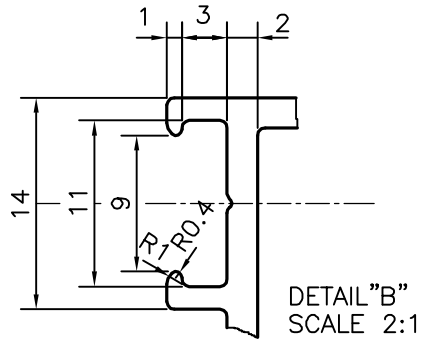
P-17293

X2228

36153



DETAIL "A"
SCALE 2:1



DETAIL "B"
SCALE 2:1

V = V GROOVE 0.3x90° (3 PLACES)

TOLERANCES ON OVERALL DIMENSIONS OF HOLLOW SECTIONS

UPTO 20.0mm - ±0.30	UPTO 80.0mm - ±0.70	UPTO 180.0mm - ±1.27	1. STRAIGHTNESS=1.7mm/M 2. TWIST=1.7mm/M 3. ANGULARITY= ±2° 4. FLATNESS =0.006xWIDTH
UPTO 30.0mm - ±0.38	UPTO 100.0mm - ±0.80	UPTO 200.0mm - ±1.40	
UPTO 40.0mm - ±0.45	UPTO 120.0mm - ±0.90	UPTO 225.0mm - ±1.52	
UPTO 50.0mm - ±0.52	UPTO 140.0mm - ±1.00		
UPTO 60.0mm - ±0.60	UPTO 160.0mm - ±1.14		



SYMBOL OF QUALITY
AN ISO 9001 COMPANY

JINDAL ALUMINIUM LTD.
BANGALORE-560073 (INDIA)

	NAME	DATE
DRAWN	J.P.KAUSHIK	22-06-2017
CHECKED		
APPROVED	B.NATARAJA	31-07-2017
SCALE		1:1
AREA mm ²		496.588
PERIMETER mm.		279.413
WEIGHT kg/m		1.341
DRAWING No.	SECTION No.	
P-17293	-	
X2228	X2228	
36153	36153	

1. ALL DIMENSIONS ARE IN mm. 2. ROUND OFF ALL SHARP CORNERS WITH 0.40 mm. 3. TOLERANCES WILL BE AS PER IS:6477-1983 , UNLESS OTHERWISE SPECIFIED	
PARTY'S NAME	TEAM WORK GLASS SOLUTION PVT. LTD., BANGALORE
PARTY'S DRAWING No.	AS PER DRAWING-TWS 2017 013
ALLOY & TEMPER	6063 T6
DESCRIPTION	TRANSOM SECTION