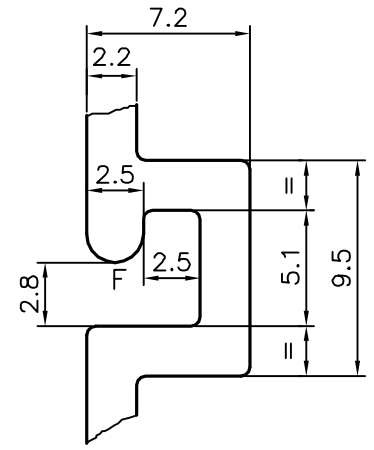
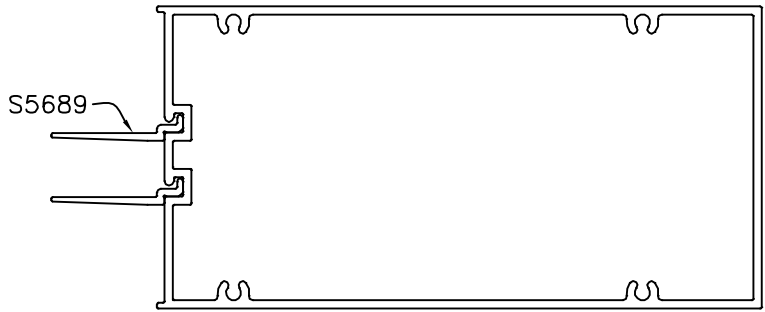
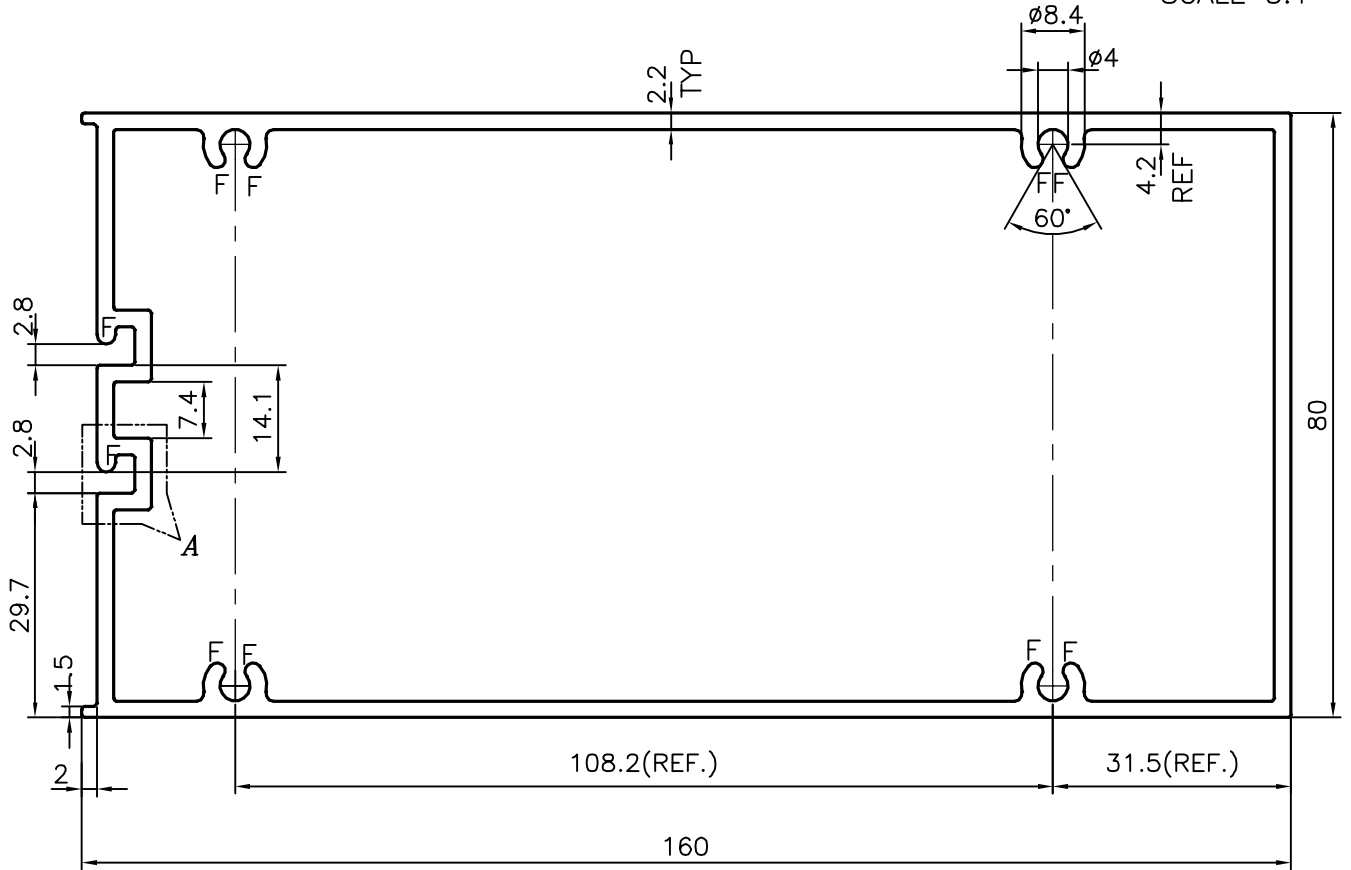


P-17894
S5690
36171




DETAIL OF "A"
SCALE 3:1



F = FULL RADIUS (10 PLACES)

TOLERANCES ON OVERALL WIDTHS & WIDTHS ACROSS FLATS OF BARS, & REGULAR SECTIONS

UPTO 6.40mm - ±0.20	UPTO 32.0mm - ±0.38	UPTO 120.0mm - ±0.85	1. STRAIGHTNESS=1.7mm/M 2. TWIST=1.7mm/M 3. ANGULARITY= ±2° 4. FLATNESS =0.007xWIDTH
UPTO 10.0mm - ±0.23	UPTO 50.0mm - ±0.46	UPTO 160.0mm - ±1.02	
UPTO 12.0mm - ±0.25	UPTO 60.0mm - ±0.53	UPTO 200.0mm - ±1.14	
UPTO 16.0mm - ±0.28	UPTO 80.0mm - ±0.69	UPTO 250.0mm - ±1.40	
UPTO 25.0mm - ±0.30	UPTO 100.0mm - ±0.75	UPTO 300.0mm - ±1.65	

 SYMBOL OF QUALITY AN ISO 9001 COMPANY	JINDAL ALUMINIUM LTD. BANGALORE-560073 (INDIA)	DRAWN	J.P.KAUSHIK	DATE	17-02-2018
		CHECKED			
1. ALL DIMENSIONS ARE IN mm. 2. ROUND OFF ALL SHARP CORNERS WITH 0.40 mm. 3. TOLERANCES WILL BE AS PER IS:6477-1983 , UNLESS OTHERWISE SPECIFIED		APPROVED	B.NATARAJ	DATE	23-02-2018
		SCALE		1:1	
PARTY'S NAME KSV INFRABUILD, GURGAON		AREA mm ²		1183.395	
		PERIMETER mm.		508.308	
PARTY'S DRAWING No. UCW-TF-160 03		WEIGHT kg/m		3.195	
		DRAWING No.	SECTION No.		
ALLOY & TEMPER 6063 T6		P-17894		-	
		S5690		S5690	
DESCRIPTION CURTAIN WALL SECTION		36171		36171	