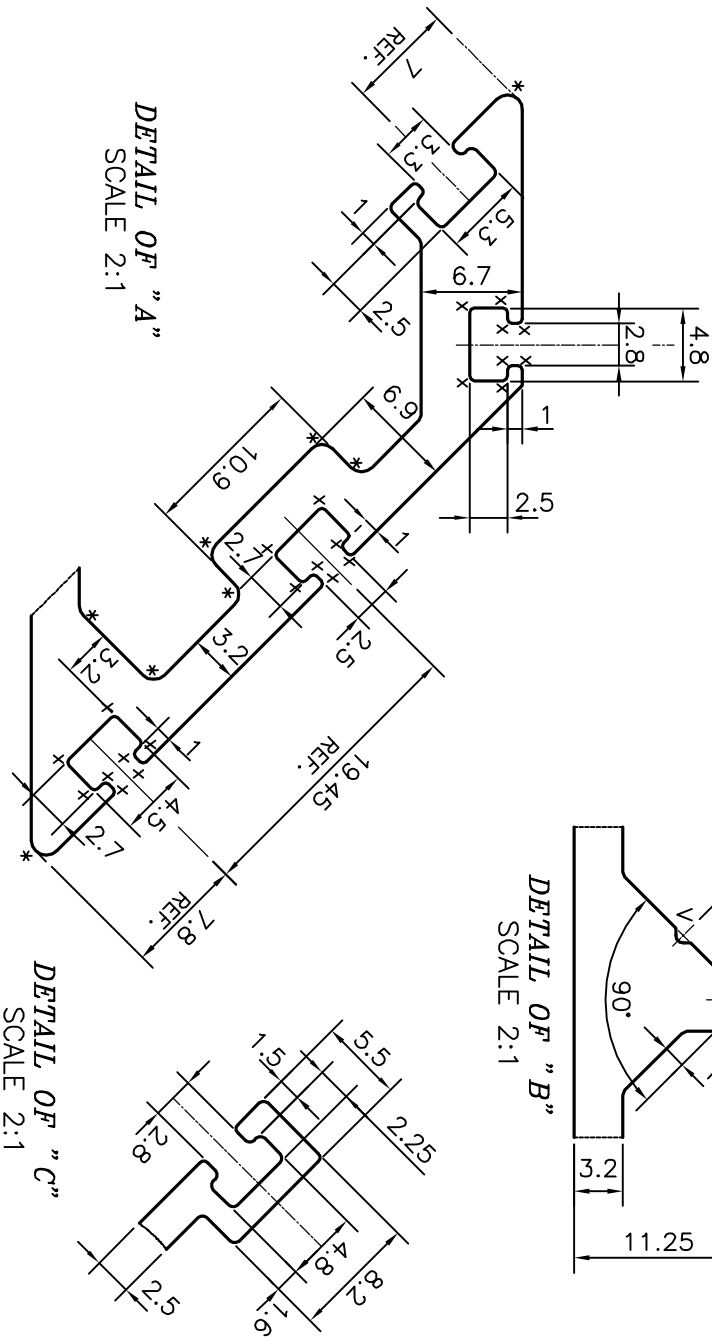
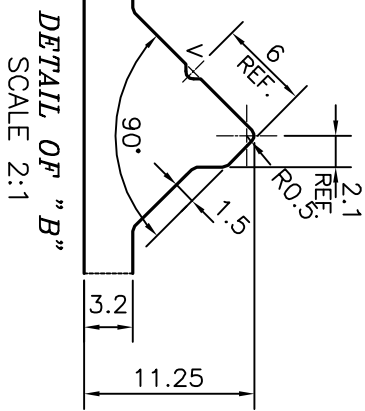
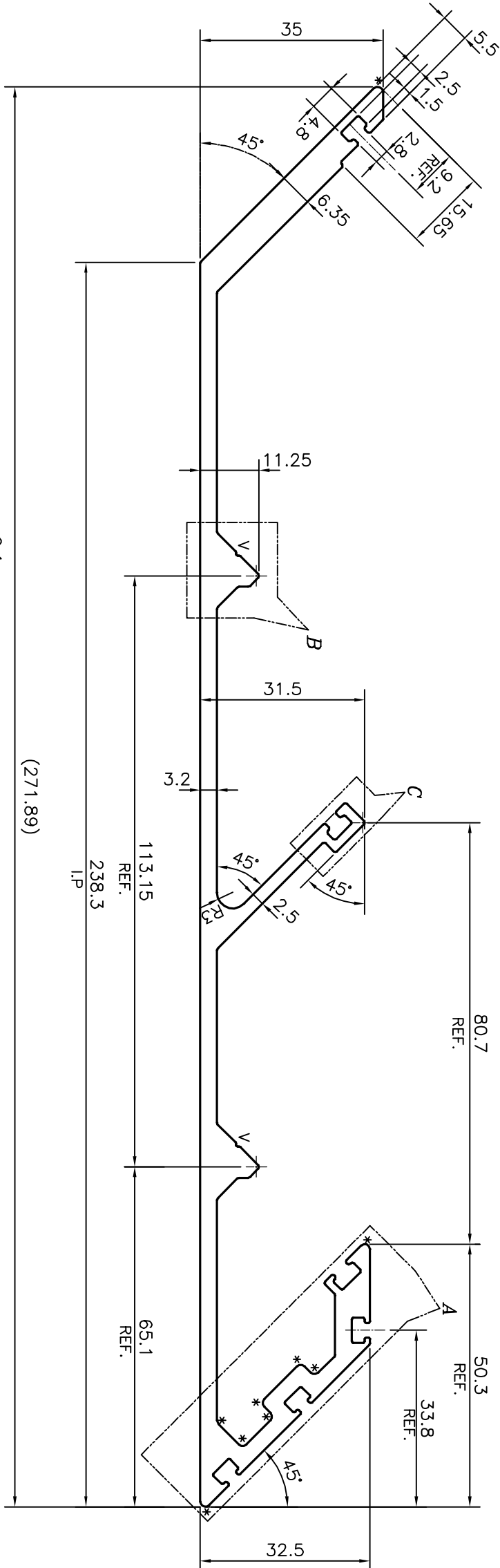
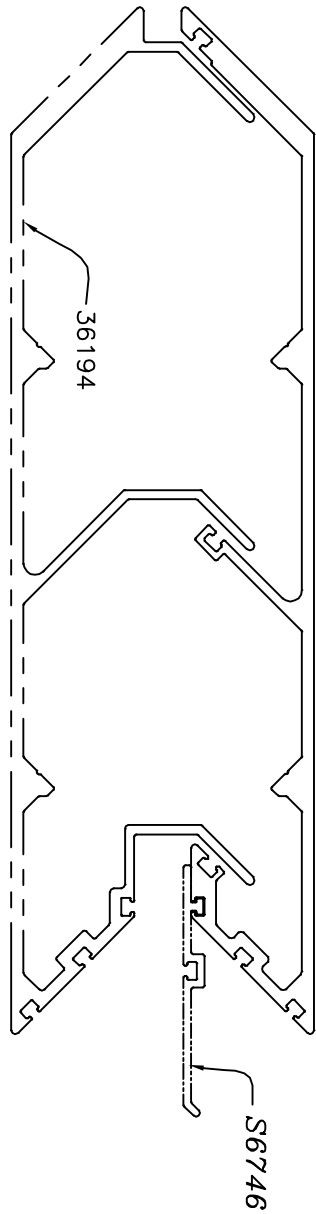


P-21254

36193



V = VEE GROOVE 0.4x90° (2 PLACES)
 X = RADIUS 0.3 mm. (18 PLACES)
 * = RADIUS 1 mm. (5 PLACES)

TOLERANCES ON OVERALL WIDTHS & WIDTHS ACROSS FLATS OF BARS, & REGULAR SECTIONS			
UPTO 6.40mm - ±0.20	UPTO 32.0mm - ±0.38	UPTO 120.0mm - ±0.85	1. STRAIGHTNESS=1.7mm/M
UPTO 10.0mm - ±0.23	UPTO 50.0mm - ±0.46	UPTO 160.0mm - ±1.02	2. TWIST=1.7mm/M
UPTO 12.0mm - ±0.25	UPTO 60.0mm - ±0.53	UPTO 200.0mm - ±1.14	3. ANGULARITY= ±2°
UPTO 16.0mm - ±0.28	UPTO 80.0mm - ±0.69	UPTO 250.0mm - ±1.40	4. FLATNESS =0.007xWIDTH
UPTO 25.0mm - ±0.30	UPTO 100.0mm - ±0.75	UPTO 300.0mm - ±1.65	

JINDAL
 BANGALORE-560073 (INDIA)

- ALL DIMENSIONS ARE IN mm.
- ROUND OFF ALL SHARP CORNERS WITH 0.40 mm.
- TOLERANCES WILL BE AS PER IS:3965-1981, UNLESS OTHERWISE SPECIFIED

PARTY'S NAME	HARDWARE SYNDICATE, BANGALORE	SCALE	1:1
PARTY'S DRAWING No.	AS PER DRAWING	AREA mm ²	1497.294
ALLOY & TEMPER	6063 T6	PERIMETER mm.	829.222
DESCRIPTION	CURTAIN WALL SECTION-INTERNAL CORNER FEMALE MULLION	WEIGHT kg/m	4.043
		DRAWING No.	P-21254
		SECTION No.	36193