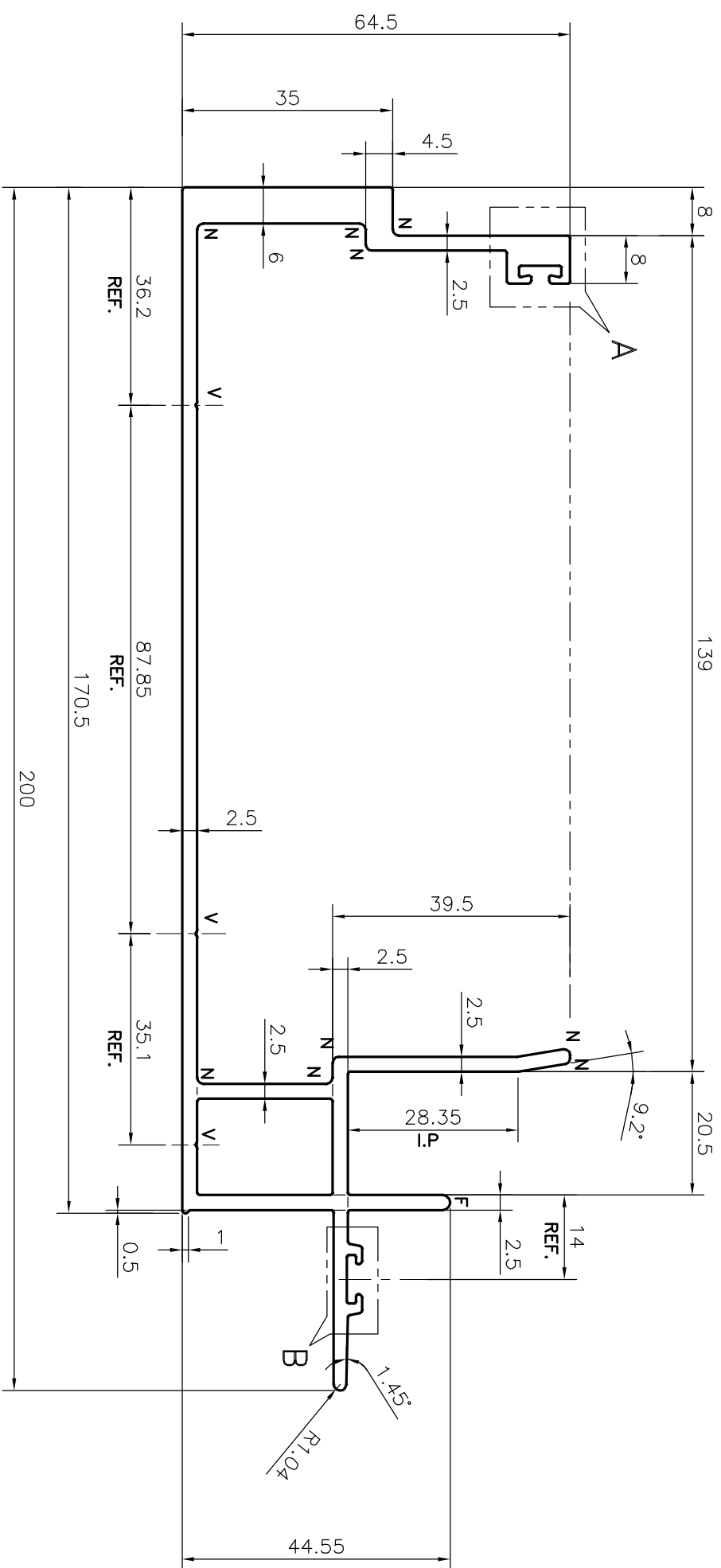
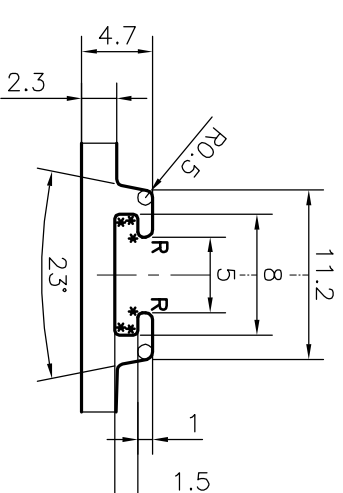
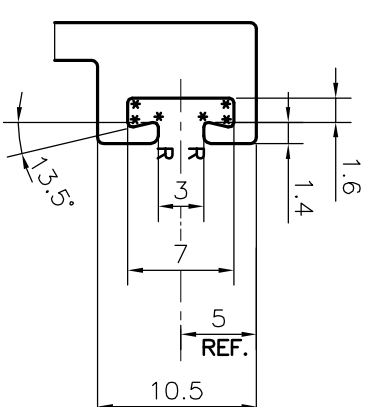


P-21394

36195



SCALE: - 1:1



R = 0.5mm RADIUS (04 PLACES)
 * = 0.3mm RADIUS (12 PLACES)
 N = 1mm RADIUS (09 PLACES)
 V="V" GROOVE 0.3x90° (3 PLACES)

TOLERANCES ON OVERALL DIMENSIONS OF HOLLOW SECTIONS

UPTO 20.0mm - ±0.30	UPTO 80.0mm - ±0.70	UPTO 180.0mm - ±1.27
UPTO 30.0mm - ±0.38	UPTO 100.0mm - ±0.80	UPTO 200.0mm - ±1.40
UPTO 40.0mm - ±0.45	UPTO 120.0mm - ±0.90	UPTO 225.0mm - ±1.52
UPTO 50.0mm - ±0.52	UPTO 140.0mm - ±1.00	
UPTO 60.0mm - ±0.60	UPTO 160.0mm - ±1.14	

1. STRAIGHTNESS=1.7mm/M
2. TWIST=1.7mm/M
3. ANGULARITY= ±2°
4. FLATNESS =0.006xWIDTH

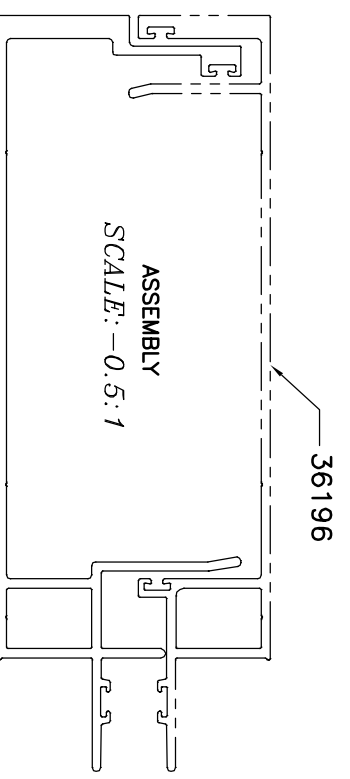
JINDAL
 BANGALORE-560073 (INDIA)

JINDAL ALUMINIUM LTD.

SYMBOL OF QUALITY
 AN ISO 9001 COMPANY

1. ALL DIMENSIONS ARE IN mm.
 2. ROUND OFF ALL SHARP CORNERS WITH 0.40 mm.
 3. TOLERANCES WILL BE AS PER IS:6477-1983 UNLESS OTHERWISE SPECIFIED

PARTY'S NAME	AASTHA ALUMINA (P) LIMITED,GURGAON	DRAWN	NAME	DATE
PARTY'S DRAWING No.	AA-T1-MM-01	CHECKED	DARPAN	02-09-2020
ALLOY & TEMPER	6063 T6	APPROVED	B.NATARAJA	12/09/2020
DESCRIPTION	MALE MULLION SECTION	SCALE	1:1	
		AREA mm ²	1144.878	
		PERIMETER mm.	736.163	
		WEIGHT kg/m	3.091	
		DRAWING No.	P-21394	SECTION No.
			36195	



SCALE: - 0.5:1