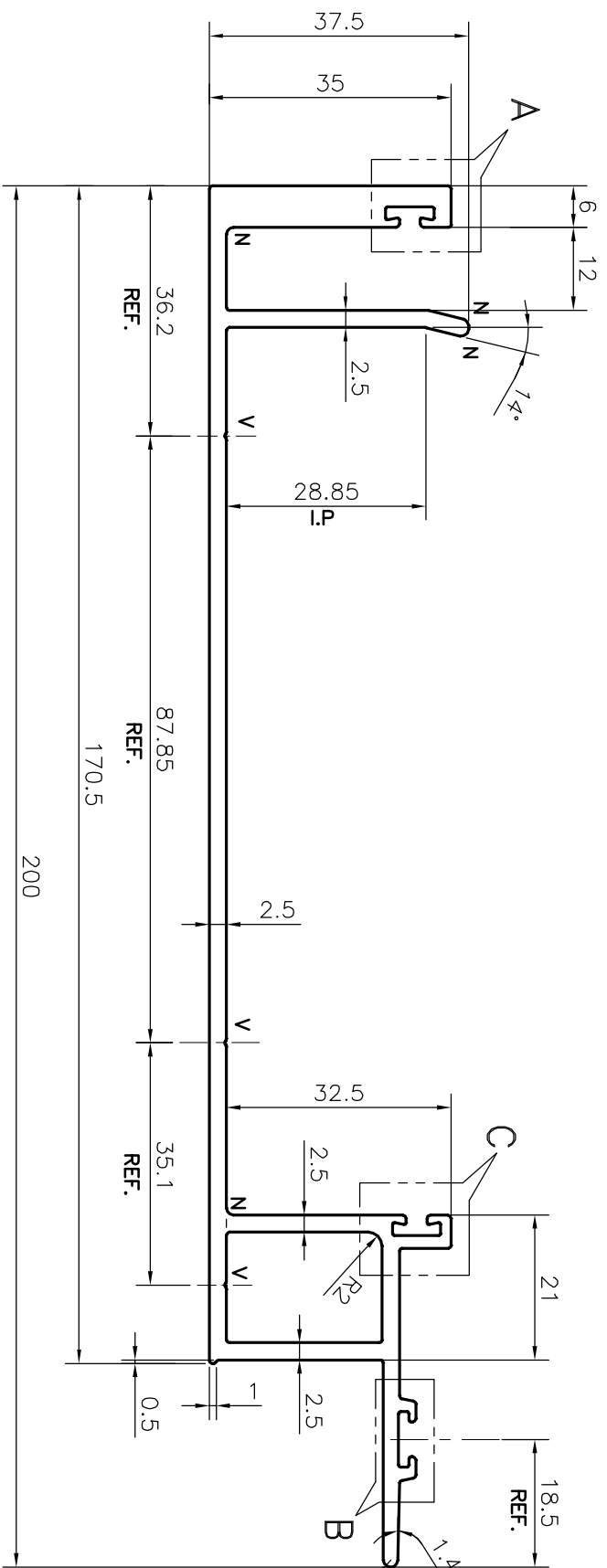
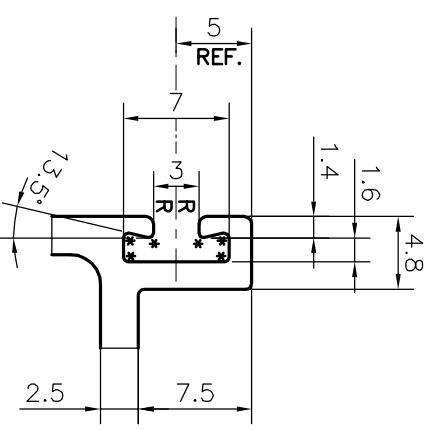


P-21395

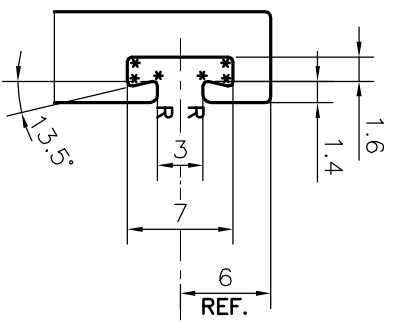
36196



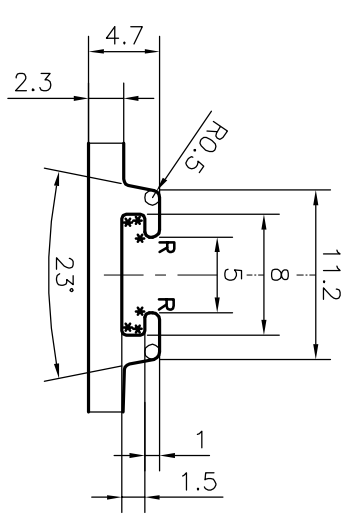
SCALE: - 1:1



SCALE: - 2:1
DETAIL OF "C"



SCALE: - 2:1
DETAIL OF "A"



SCALE: - 2:1
DETAIL OF "B"

R = 0.5mm RADIUS (06 PLACES)
* = 0.3mm RADIUS (18 PLACES)
N = 1mm RADIUS (04 PLACES)
V="V" GROOVE 0.3x90° (3 PLACES)

TOLERANCES ON OVERALL DIMENSIONS OF HOLLOW SECTIONS

UPTO 20.0mm - ±0.30	UPTO 80.0mm - ±0.70	UPTO 180.0mm - ±1.27
UPTO 30.0mm - ±0.38	UPTO 100.0mm - ±0.80	UPTO 200.0mm - ±1.40
UPTO 40.0mm - ±0.45	UPTO 120.0mm - ±0.90	UPTO 225.0mm - ±1.52
UPTO 50.0mm - ±0.52	UPTO 140.0mm - ±1.00	
UPTO 60.0mm - ±0.60	UPTO 160.0mm - ±1.14	

1. STRAIGHTNESS=1.7mm/M
2. TWIST=1.7mm/M
3. ANGULARITY= ±2°
4. FLATNESS =0.006xWIDTH

JINDAL
SYMBOL OF QUALITY
AN ISO 9001 COMPANY
JINDAL ALUMINIUM LTD.
BANGALORE-560073 (INDIA)

1. ALL DIMENSIONS ARE IN mm.
2. ROUND OFF ALL SHARP CORNERS WITH 0.40 mm.
3. TOLERANCES WILL BE AS PER IS:6477-1983 UNLESS OTHERWISE SPECIFIED

PARTY'S NAME	AASTHA ALUMINA (P) LIMITED,GURGAON	DRAWN	NAME	DATE
PARTY'S DRAWING No.	AA-T1-FM-02	CHECKED	DARPAN	02-09-2020
ALLOY & TEMPER	6063 T6	APPROVED	B.NATARAJA	12/09/2020
DESCRIPTION	FEMALE MULLION SECTION	SCALE	1:1	
		AREA mm ²	955.513	
		PERIMETER mm.	642.033	
		WEIGHT kg/m	2.580	
		DRAWING No.	P-21395	SECTION No.
			36196	

