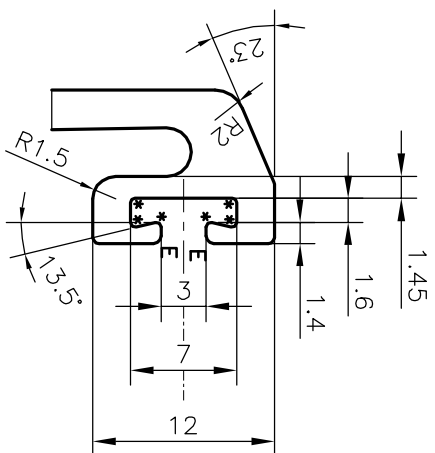
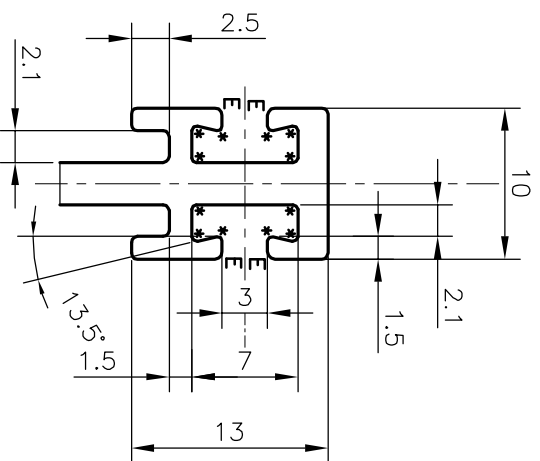


P-21397

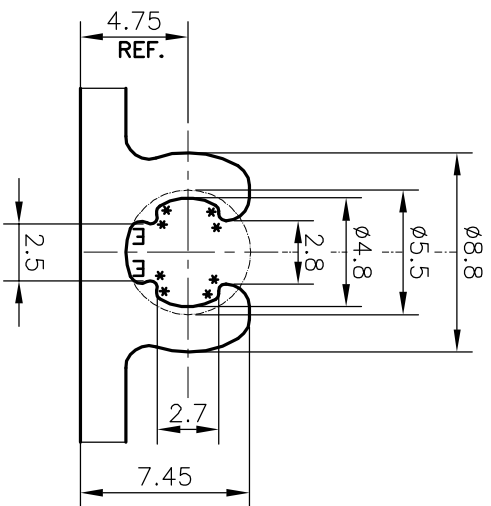
36198



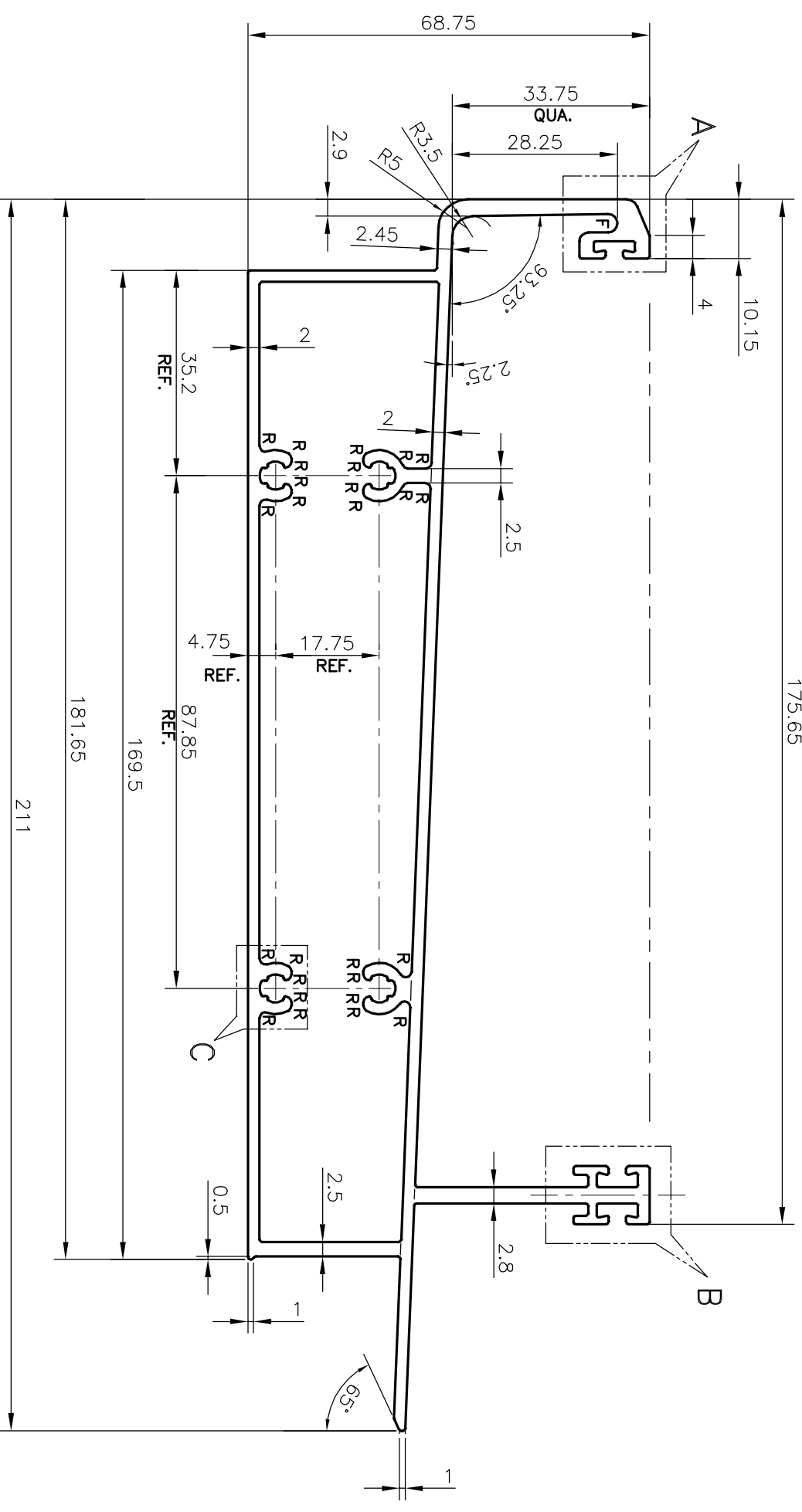
SCALE: - 2:1  
DETAIL OF "A"



SCALE: - 2:1  
DETAIL OF "B"



SCALE: - 3:1  
DETAIL OF "C"



SCALE: - 1:1

F = FULL RADIUS (1 PLACE)  
R = 1mm RADIUS (26 PLACES)  
E = 0.5mm RADIUS (08 PLACES)  
\* = 0.3mm RADIUS (50 PLACES)

TOLERANCES ON OVERALL DIMENSIONS OF HOLLOW SECTIONS

UPTO 20.0mm - ±0.30	UPTO 80.0mm - ±0.70	UPTO 180.0mm - ±1.27
UPTO 30.0mm - ±0.38	UPTO 100.0mm - ±0.80	UPTO 200.0mm - ±1.40
UPTO 40.0mm - ±0.45	UPTO 120.0mm - ±0.90	UPTO 225.0mm - ±1.52
UPTO 50.0mm - ±0.52	UPTO 140.0mm - ±1.00	
UPTO 60.0mm - ±0.60	UPTO 160.0mm - ±1.14	

<p>SYMBOL OF QUALITY AN ISO 9001 COMPANY</p>		<p><b>JINDAL ALUMINIUM LTD.</b> BANGALORE - 560073 (INDIA)</p>	
<p>1. ALL DIMENSIONS ARE IN mm. 2. ROUND OFF ALL SHARP CORNERS WITH 0.40 mm. 3. TOLERANCES WILL BE AS PER IS:6477-1983 UNLESS OTHERWISE SPECIFIED</p>		<p>1. STRAIGHTNESS=1.7mm/M 2. TWIST=1.7mm/M 3. ANGULARITY= ±2° 4. FLATNESS =0.006xWIDTH</p>	
PARTY'S NAME	AASTHA ALUMINA (P) LIMITED,GURGAON	DRAWN	DARPAN
PARTY'S DRAWING No.	AA-T1-MT-04	CHECKED	
ALLOY & TEMPER	6063 T6	APPROVED	B.NATARAJA
DESCRIPTION	MALE TRANSSOM SECTION	SCALE	1:1
		AREA mm <sup>2</sup>	1311.877
		PERIMETER mm.	716.725
		WEIGHT kg/m	3.542
		DRAWING No.	P-21397
		SECTION No.	36198

175.65

10.15

B

A

C

93.25

QUA.

68.75

2.9

2.45

2.25

2.5

2

2

35.2 REF.

87.85 REF.

169.5

181.65

211

0.5

2.5

2.8

1

65°

1

2.5

2

2

2

2

2

2

2

2

2

2

2

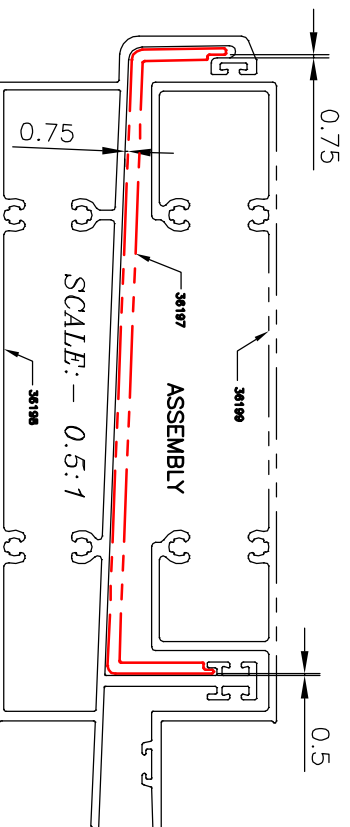
2

2

2

2

2



SCALE: - 0.5:1  
ASSEMBLY