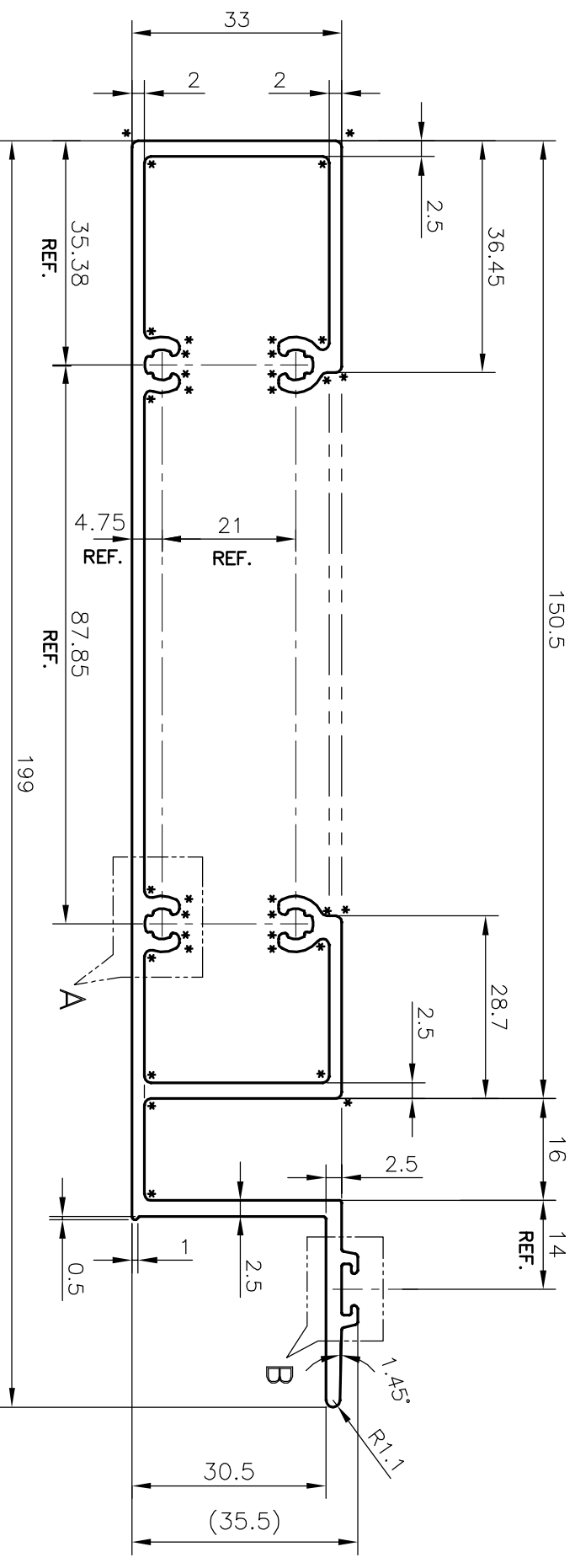
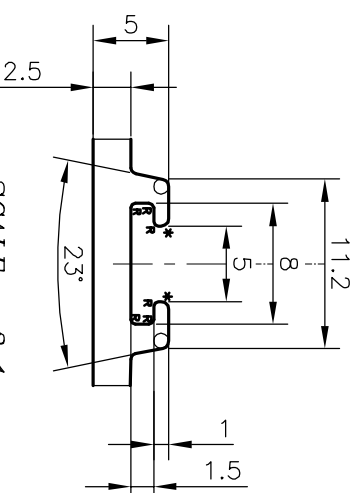
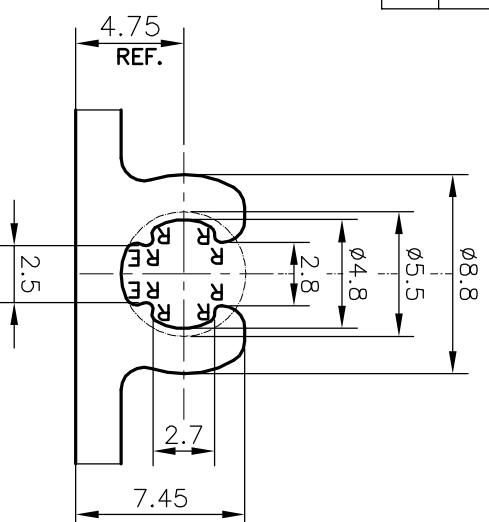
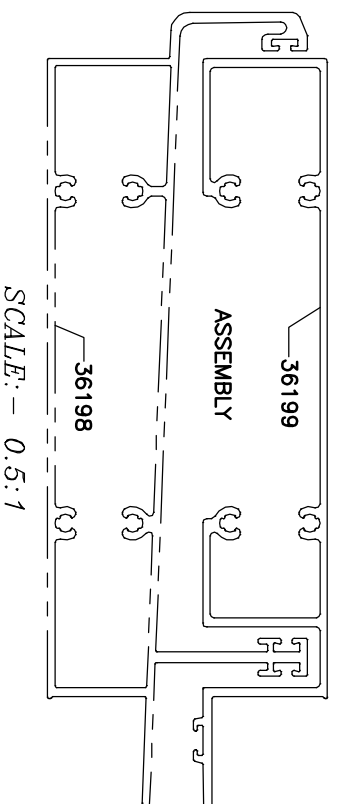


P-21398

36199



R = 0.5mm RADIUS (14 PLACES)
 E = 0.5mm RADIUS (08 PLACES)
 * = 1mm RADIUS (37 PLACES)



TOLERANCES ON OVERALL WIDTHS & WIDTHS ACROSS FLATS OF BARS, & REGULAR SECTIONS

UPTO 6.40mm - ±0.20	UPTO 32.0mm - ±0.38	UPTO 120.0mm - ±0.85
UPTO 10.0mm - ±0.23	UPTO 50.0mm - ±0.46	UPTO 160.0mm - ±1.02
UPTO 12.0mm - ±0.25	UPTO 60.0mm - ±0.53	UPTO 200.0mm - ±1.14
UPTO 16.0mm - ±0.28	UPTO 80.0mm - ±0.69	UPTO 250.0mm - ±1.40
UPTO 25.0mm - ±0.30	UPTO 100.0mm - ±0.75	UPTO 300.0mm - ±1.65

<p>SYMBOL OF QUALITY AN ISO 9001 COMPANY</p>	<p>JINDAL ALUMINIUM LTD. BANGALORE-560073 (INDIA)</p>	DRAWN	NAME	DATE
		CHECKED	DARPAN	02-09-2020
<p>1. ALL DIMENSIONS ARE IN mm. 2. ROUND OFF ALL SHARP CORNERS WITH 0.40 mm. 3. TOLERANCES WILL BE AS PER IS:3965-1981, UNLESS OTHERWISE SPECIFIED</p>		APPROVED	B.NATARAJA	12/09/2020
<p>PARTY'S NAME AASTHA ALUMINA (P) LIMITED, GURGAON</p>		SCALE	1:1	
<p>PARTY'S DRAWING No. AA-T1-FT-03</p>		AREA mm ²	900.305	
<p>ALLOY & TEMPER 6063 T6</p>		PERIMETER mm.	822.906	
<p>DESCRIPTION FEMALE TRANSSOM SECTION</p>		WEIGHT kg/m	2.431	
		DRAWING No.	SECTION No.	
		P-21398	-	
		36199	36199	

SCALE: - 0.5:1

SCALE: - 1:1