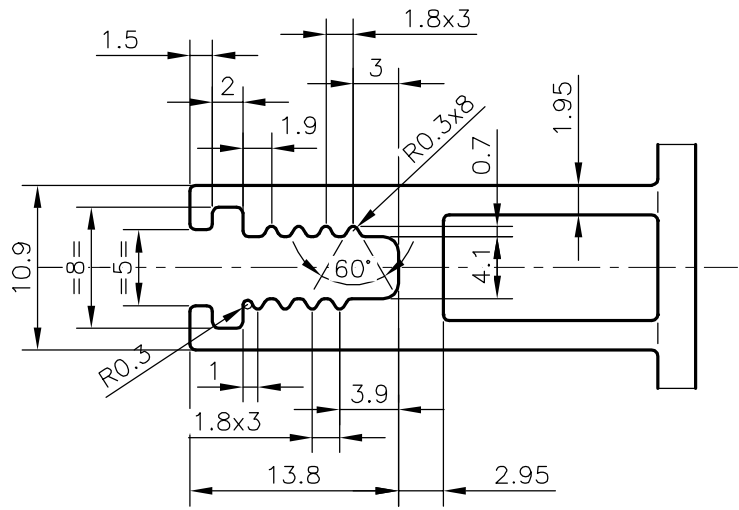
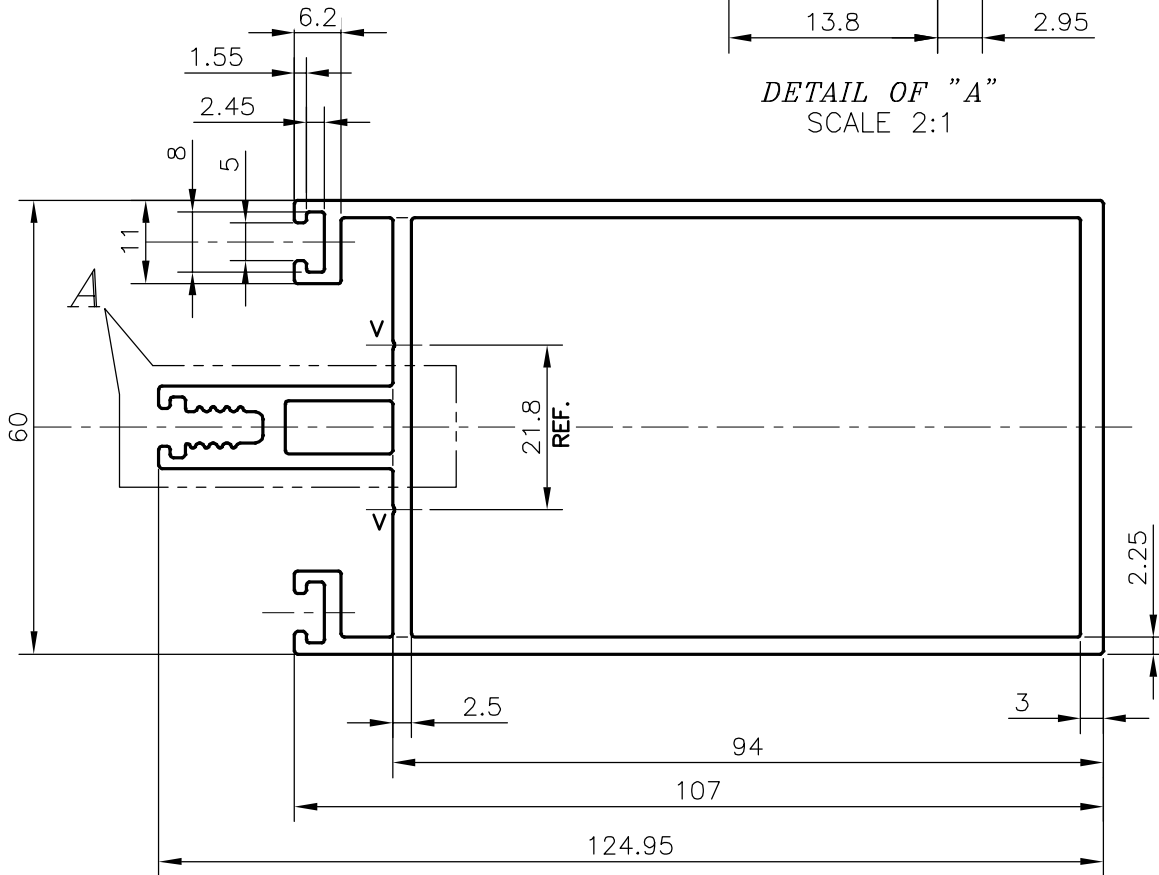


P-20272

36205



DETAIL OF "A"  
SCALE 2:1



V="V" GROOVE 0.3x90° (2 PLACES)

TOLERANCES ON OVERALL DIMENSIONS OF HOLLOW SECTIONS

|                     |                      |                      |   |
|---------------------|----------------------|----------------------|---|
| UPTO 20.0mm - ±0.30 | UPTO 80.0mm - ±0.70  | UPTO 180.0mm - ±1.27 | 1. STRAIGHTNESS=1.7mm/M<br>2. TWIST=1.7mm/M<br>3. ANGULARITY= ±2°<br>4. FLATNESS =0.006xWIDTH |
| UPTO 30.0mm - ±0.38 | UPTO 100.0mm - ±0.80 | UPTO 200.0mm - ±1.40 |   |
| UPTO 40.0mm - ±0.45 | UPTO 120.0mm - ±0.90 | UPTO 225.0mm - ±1.52 |   |
| UPTO 50.0mm - ±0.52 | UPTO 140.0mm - ±1.00 |                      |   |
| UPTO 60.0mm - ±0.60 | UPTO 160.0mm - ±1.14 |                      |   |



SYMBOL OF QUALITY  
AN ISO 9001 COMPANY

**JINDAL ALUMINIUM LTD.**  
BANGALORE-560073 (INDIA)

|                      | NAME        | DATE       |
|----------------------|-------------|------------|
| DRAWN                | DARPAN      | 18-10-2019 |
| CHECKED              |             |            |
| APPROVED             | B.NATARAJA  | 21-09-2020 |
| SCALE                |             | 1:1        |
| AREA mm <sup>2</sup> |             | 1008.654   |
| PERIMETER mm.        |             | 515.985    |
| WEIGHT kg/m          |             | 2.723      |
| DRAWING No.          | SECTION No. |            |
| P-20272              | -           |            |
| 36205                | 36205       |            |

1. ALL DIMENSIONS ARE IN mm.
2. ROUND OFF ALL SHARP CORNERS WITH 0.40 mm.
3. TOLERANCES WILL BE AS PER IS:6477-1983, UNLESS OTHERWISE SPECIFIED

|                     |                                |
|---------------------|--------------------------------|
| PARTY'S NAME        | GLAZED TECHNO INDIA., DEHRADUN |
| PARTY'S DRAWING No. | AS PER AUTOCAD DRAWING         |
| ALLOY & TEMPER      | 6063 T6                        |
| DESCRIPTION         | ALUMINIUM MULLION/TRANSOM      |