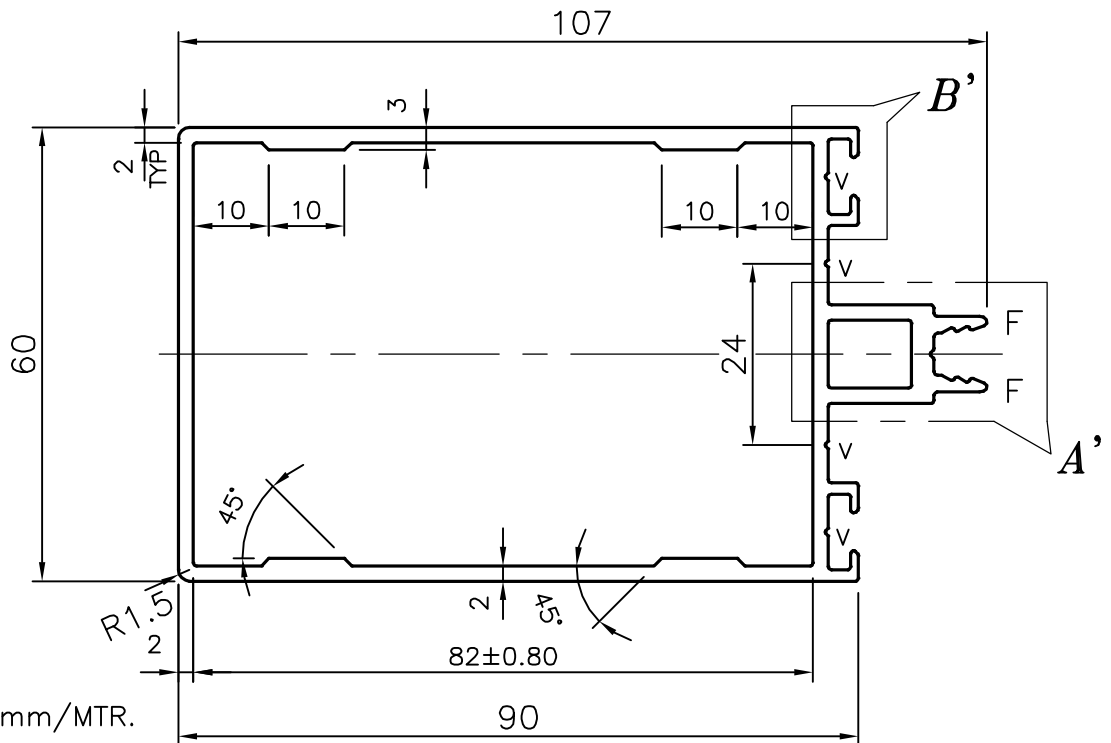
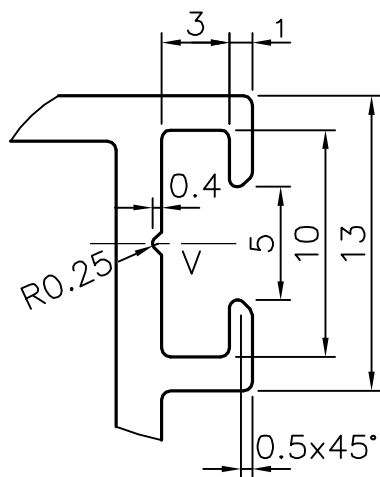


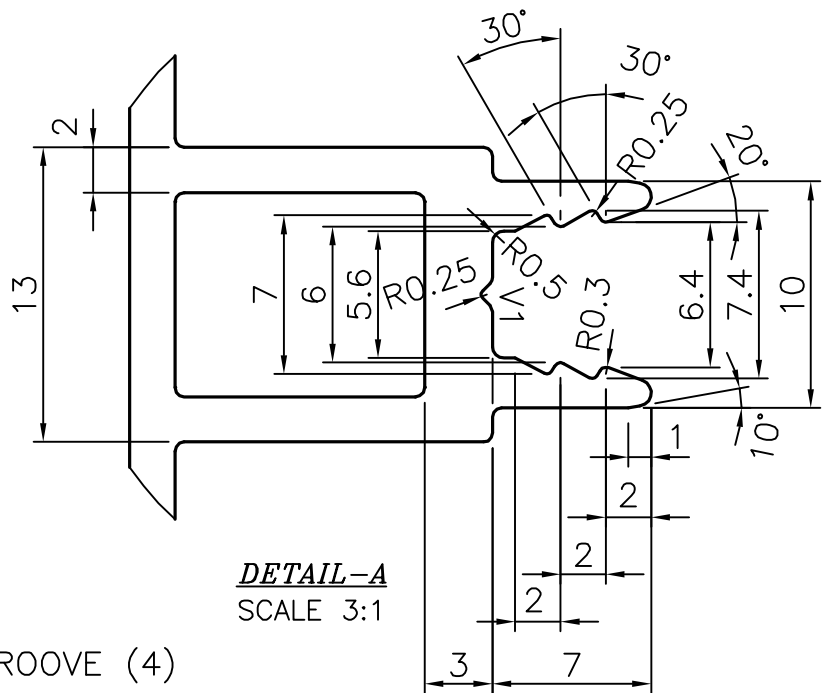
P-18082
S5770
36217



TWIST = 1.7 mm/MTR.
 FLATNESS = ±0.70
 ANGULARITY = ±2°
 STRAIGHTNESS = 1.7 mm/MTR.




DETAIL-B
SCALE 3:1



DETAIL-A
SCALE 3:1

V = 0.40 DEEPx90° VEE GROOVE (4)
 V1 = 0.50 DEEPx90° VEE GROOVE (1)
 F = FULL RADIUS (2)

 SYMBOL OF QUALITY AN ISO 9002 COMPANY	JINDAL ALUMINIUM LTD. BANGALORE-560073 (INDIA)	NAME	DATE
		DRAWN	J.P.KAUSHIK 27-03-2018
		CHECKED	
		APPROVED	B.NATARAJA 14-04-2018
		SCALE	1:1
		AREA mm ²	750.4
		PERIMETER mm.	393.408
		WEIGHT kg/m	2.026
		DRAWING No.	SECTION No.
PARTY'S NAME	GLOBAL SYNDICATE, BANGALORE	P-18082	-
PARTY'S DRAWING No.	LIGHTER OF 22847	S5770	S5770
ALLOY & TEMPER	6063 T6	36217	36217
DESCRIPTION	CURTAIN WALL SECTION		

1. ALL DIMENSIONS ARE IN mm.
 2. ROUND OFF ALL SHARP CORNERS WITH 0.40 mm.
 3. TOLERANCES WILL BE AS PER IS:6477-1983 , UNLESS OTHERWISE SPECIFIED